



Founded 1867

ST ANDREWS LADIES' PUTTING CLUB

"HIMALAYAS"

Name

Hole	Strokes			Hole	Strokes				
	DL	JF	TR		DL	JF	TR		
1	3	2	2	10	2	3	2	-3	
2	1	3	3	11	2	2	2	-3	
3	1	2	2	12	2	2	3	x	
4	2	2	3	13	-1	2	3	-4	
5	2	2	2	14	-1	3	2	3	-5
6	3	2	3	15	-2	3	3	2	-x
7	2	2	3	16	-3	2	2	6	-5
8	2	2	2	17	-3	2	3	2	-4
9	2	2	3	18	-4	2	3	2	-3
Total Out 8 19 23				Total In					
				Total Out					
				Total					

Please observe the Health and Safety Instructions

COMPETITION							ENTRY NO				
DATE			Handicap	Strokes Rec'd	TIME			Handicap	Strokes Rec'd		
A					C						
B					Marker/D						

PAR 555
Slope = 139
Course rating =

PAR 555
Slope = 135
Course rating =

PAR 555
Slope = 120
Course rating =

Hole	Marker's Score/D	Name	White Yards	Yellow Yards	Par	Blue Yards	Stroke Index	DL	Score	5A	B	1C	W/L/H/O Points	Ladies Yards	Par	Stroke Inc
1		East Neuk	469	463	5/4	399	11	7/0	5/2	8/0	7/0			399	5	9
2		Windmill Corner	385	361	4	317	3	4/3	7/0	6/1	7/0			317	4	3
3		Balcomie Castle	323	292	4	267	15	4/2		5/1	4/2			267	4	7
4		Hollow Flats	455	427	4	382	1	4/3		6/1	5/2			382	5	1
5		H.M.S. Jackdaw	231	211	3	177	7	3/3		4/2	4/2			177	3	5
6		Barracuda Way	552	518	5	475	13	5/2		5/3	6/1			475	5	1
7		Kilmonen	197	165	3	145	5	4/2		3/3	4/2			145	3	1
8		Stringbag Alley	513	487	5/4	404	17	5/1		5/2	6/1			404	5	1
9		Crag Heid	376	347	4	273	9	4/2		5/2	5/1			273	4	1
OUT			3501	3271	37/35	2839		18		15	11			2839	38	

A fourball should take a maximum of 3 hours 45 mins for a round of golf

10		Alan Miller	299	280	4	253	18	3/3		7/0	4/2			253	4	1
11		The Muir	357	313	4	279	6	5/1		3/4	5/2			279	4	4
12		Foreland Head	344	316	4	281	14	3/3		4/2	5/1			281	4	1
13		Cat Ha Brae	157	140	3	113	16	3/2		4/1	3/2			113	3	1
14		Lang Man's Grave	411	402	4	346	2	5/2		6/1	5/2			346	4	2
15		Danes Dike	552	511	5/4	425	8	5/2		7/1	6/2			425	5	8
16		Isle of May	376	358	4	293	12	5/1		4/3	4/2			293	4	6
17		Signal Point	197	173	3	132	4	4/2		4/2	4/2			132	3	1
18		Constantine's Way	457	421	4	379	10	4/2		5/2	5/1			379	5	1
IN			3150	2914	35/34	2501				16	16			2501	36	
OUT			3501	3271	37/35	2839				15	11			2839	38	
TOTAL			6651	6185	72/69	5340				31	27			5340	74	

STABLEFORD POINTS OR PAR RESULT

Please indicate which tee used ✓



HANDICAP

NETT

Holes won

Holes lost

Result

Marker's Signature

Player's Signature

Local Rules

1. OUT OF BOUNDS (RULE 27-1)

- Beyond any wall or fence bounding the course.
- Beyond the line of white stakes surrounding the Jubilee Greenkeeping Centre to the right of the 1st, 2nd, 17th and 18th holes.
- Beyond the line of white stakes to the left of the 8th hole and behind the 18th green.

2. IMMOVABLE OBSTRUCTIONS (RULE 24-2)

To include tarmac roads, staked trees and march stones.

3. INTEGRAL PARTS OF THE COURSE

All roads and paths (with the exception of tarmac roads) are integral parts of the course. The ball must be played as it lies or declared unplayable.

4. STONES IN BUNKERS

Stones in bunkers are movable obstructions (Rule 24-1 applies).

5. GROUND UNDER REPAIR (RULE 25-1)

Any area marked as G.U.R. and/or surrounded by a white line.

6. IMMOVABLE OBSTRUCTIONS CLOSE TO PUTTING GREEN

Relief from interference by an immovable obstruction may be obtained under Rule 24-2. In addition, if a ball lies off the putting green but not in a hazard and if an immovable obstruction on or within two club-lengths of the putting green and within two club-lengths of the ball intervenes on the line of play between the ball and the hole, the player may take relief as follows:

The ball must be lifted and dropped at the nearest point to where the ball lay that (a) is not nearer the hole, (b) avoids intervention and (c) is not in a hazard or on a putting green. The ball may be cleaned when lifted.

Relief under this Local Rule is also available if the player's ball lies on the putting green and an immovable obstruction within two club-lengths of the putting green intervenes on his line of putt. The player may take relief as follows:

The ball must be lifted and placed at the nearest point where the ball lay that (a) is not nearer the hole, (b) avoids intervention and (c) is not in a hazard. The ball may be cleaned when lifted.

Penalty for breach of Local Rule 6:

Match play - loss of hole; Stroke play - two strokes.

Yardages on sprinkler heads are to the front edge of the green.



Download your FREE St Andrews Links App for Apple or Android today

© Copyright 2016

The design and content of this scorecard is the copyright of St Andrews Links and may not be stored, transmitted or reproduced in any form without written permission of the copyright holders.



PLU: 306701



St Andrews Links

Pilmour House

St Andrews • KY16 9SF

T: +44 (0)1334 466666

E: enquiries@standrews.com

standrews.com

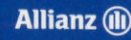


St Andrews Links Trust: Scottish Charity No. SC006161



THE JUBILEE COURSE St Andrews Links 1897

Proud Global Partners with



the home of golf®

Hole	Name	Hole	Name
1	Willie Auchterlonie	10	Spire
2	Whinny Knowe	11	Treble-One
3	The Skelp	12	The Butts
4	Crossgate	13	Hale Bopp
5	Hackie's Barra'	14	Willie Whitelaw
6	Playfair	15	Steel's Gem
7	Ayton	16	Freddie Tait
8	Eden's Edge	17	Ladyhead
9	Windy Tap	18	Honeyman's Howe

St Andrews Links Golf Academy
Dedicated to Excellence



St Andrews Links Golf Academy is dedicated to excellence. Instruction is provided by PGA-Qualified professionals during lessons which are tailored to suit your individual needs. The Academy is at the forefront of technology offering lessons which feature swing analysis, biomechanical analysis and the SAM Putt Lab.

The Academy also houses a Callaway Performance Centre to customise your clubs as well as a long and short game practice area including a replica Road Hole Bunker.

To book or for further information, email academy@standrews.com or call 01334 466631.

Pace of play: We ask that all golfers show consideration to others and play at an appropriate pace. This means keeping up with the group in front and, if you are delayed, allowing the following group to play through. Our Rangers continually monitor pace of play and will approach groups who fall behind.

Please replace all divots and repair pitchmarks.

the jubilee course

Date/Time													H'cap		Strokes Rec'd		Par		SSS		Rating		Slope				
Event																	72		73		72.6		131				
Player A																	72		71		71.2		127				
Player B																	74		75		74.6		128				
Hole	Max. Time	Marker's Score	White Yards	Yellow Yards	Par	Men's S.I.	Player A	Player B	Pts +/-	Ladies' Yards	Par	Ladies' S.I.	Hole	Max. Time	Marker's Score	White Yards	Yellow Yards	Par	Men's S.I.	Player A	Player B	Pts +/-	Ladies' Yards	Par	Ladies' S.I.		
1	0:15	→ 11	367	337	4	6	5/2	5/2*	-1	318	4	11	10	2:16		411	403	4	5	6/1	5/2	+2	387	4	6		
2	0:28		360	352	4	13	6/1	5/1	-1	271	4	13	11	2:33		497	488	5	11	6/2	5/2	+2	470	5	10		
3	0:46		546	524	5	3	6/2	5/3	□	506	5	1	12	2:50		538	516	5	4	6/2	5/3	+3	479	5	2		
4	1:00		371	349	4	12	5/2	4/2	□	332	4	5	13	3:00		188	176	3	17	4/1	4/1	+3	147	3	18		
5	1:10		162	141	3	18	3/2	3/2	□	132	3	17	14	3:15		438	423	4	9	5/2	5/1	+2	415	5	14		
6	1:26		498	480	5	1	5/3	4/4	+1	422	5	3	15	3:28		356	346	4	2	6/1	6/1	+2	341	4	4		
7	1:39		373	341	4	10	5/2	4/2	+1	329	4	7	16	3:44		428	418	4	14	5/1	4/2	+3	409	5	8		
8	1:53		369	344	4	8	4/3	4/3	+1	326	4	9	17	3:54		211	199	3	7	3/3	3/3		180	3	16		
9	2:02		192	182	3	15	4/1	4/1	+1	139	3	15	18	4:08		437	405	4	16	6/0	5/1		372	4	12		
Out	2:02		3238	3050	36		18	18		2775	36		In	2:06		3504	3374	36		13	16		3200	38			
Yardages on sprinkler heads are to the front edge of the green.													Out	2:02		3238	3050	36				18	18		2775	36	
Marker's Signature													Total	4:08		6742	6424	72				31	34		5975	74	
Player's Signature													H'cap														
													Nett Score														
													Stableford Points or Par Result														

Marker's Signature

Player's Signature

H'cap

Nett Score

Stableford Points or Par Result

Local Rules

1. OUT OF BOUNDS (RULE 27-1)

- Beyond any wall, fence or line of white posts bounding the course.
- Beyond the Swilcan Burn on the right of the 1st hole and beyond the stakes on the right of the 1st and 2nd holes.
- Beyond the fence behind the 18th green and 1st tee and on or over the white line between sections of this fence.

NOTE: The posts on the right of the 12th and 13th holes are not a boundary (Rule 24-2 applies).

2. WATER HAZARDS (RULE 26)

- Those parts of the Swilcan Burn which are marked with yellow stakes are water hazards.
- Those parts of the Swilcan Burn to be treated as lateral water hazards are marked with red stakes.

3. GROUND UNDER REPAIR (RULE 25-1)

Any area marked as G.U.R. and/or surrounded by a white line.

4. ROADS AND PATHS (RULE 28)

All roads and paths are integral parts of the course. The ball must be played as it lies or declared unplayable.

5. MARCH STONES (RULE 24-2)

March stones are immovable obstructions (Rule 24-2 applies).

6. STONES IN BUNKERS

Stones in bunkers are movable obstructions (Rule 24-1 applies).

7. IMMOVABLE OBSTRUCTIONS CLOSE TO PUTTING GREEN

Relief from interference by an immovable obstruction may be obtained under Rule 24-2. In addition, if a ball lies off the putting green but not in a hazard and if an immovable obstruction on or within two club-lengths of the putting green and within two club-lengths of the ball intervenes on the line of play between the ball and the hole, the player may take relief as follows:

The ball must be lifted and dropped at the nearest point to where the ball lay that (a) is not nearer the hole, (b) avoids intervention and (c) is not in a hazard or on a putting green. The ball may be cleaned when lifted.

Relief under this Local Rule is also available if the player's ball lies on the putting green and an immovable obstruction within two club-lengths of the putting green intervenes on his line of putt. The player may take relief as follows:

The ball must be lifted and placed at the nearest point where the ball lay that (a) is not nearer the hole, (b) avoids intervention and (c) is not in a hazard. The ball may be cleaned when lifted.

Penalty for breach of Local Rule 7:

Match play - loss of hole; Stroke play - two strokes.

Yardages on sprinkler heads are to the front edge of the green.
White numbers on front nine/red numbers on back nine.



Download your FREE St Andrews Links App for Apple or Android today

© Copyright 2016

The design and content of this scorecard is the copyright of St Andrews Links and may not be stored, transmitted or reproduced in any form without written permission of the copyright holders.



PLU: 303601



St Andrews Links

Pilmour House
St Andrews • KY16 9SF
T: +44 (0)1334 466666
E: enquiries@standrews.com
standrews.com



St Andrews Links Trust: Scottish Charity No. SC006161



THE
OLD COURSE
St Andrews Links

Proud Global Partners with



the home of golf

Hole	Name	Hole	Name
1	Burn	10	Bobby Jones
2	Dyke	11	High (in)
3	Cartgate (out)	12	Heathery (in)
4	Ginger Beer	13	Hole O'Cross (in)
5	Hole O'Cross (out)	14	Long
6	Heathery (out)	15	Cartgate (in)
7	High (out)	16	Corner of the Dyke
8	Short	17	Road
9	End	18	Tom Morris



Write your own History
standrews.com



Pace of play: We ask that all golfers show consideration to others and play at an appropriate pace. This means keeping up with the group in front and, if you are delayed, allowing the following group to play through. Our Rangers continually monitor pace of play and will approach groups who fall behind.

Please replace all divots and repair pitchmarks.

Date/Time: _____

Event: _____

Player A: _____

Player B: _____

Hole	Max. Time	Marker's Score	White Yards	Yellow Yards	Par	Men's S.I.	Player A	Player B	Pts +/-	Ladies' Yards	Par	Ladies' S.I.
1	0:13		376	355	4	10	4/3	6/0	-1	339	4	12
2	0:27		411	395	4	6	4/3	5/2	-2	375	5	14
3	0:40		370	337	4	16	4/2	3/3	-1	321	4	8
4	0:54		419	411	4	8	5/2	4/3	□	401	5	6
5	1:11		514	514	5	2	5/3	4/4	+1	454	5	2
6	1:24		374	360	4	12	5/2	6/0	□	325	4	10
7	1:37		359	349	4	4	4/3	4/3	□	335	4	4
8	1:45		166	154	3	14	4/1	2/3	+1	145	3	18
9	1:57		347	289	4	18	4/2	6/0	□	261	4	16
Out	1:57		3336	3164	36		21	18		2956	38	

Yardages on sprinkler heads are to the front edge of the green.
White numbers on front nine/red numbers on back nine.

Marker's Signature

Player's Signature

the old course

H'cap	Strokes Rec'd	Par	SSS	Rating	Slope
		72	73	73.1	132
		72	71	71.4	129
		76	76	75.6	138

Hole	Max. Time	Marker's Score	White Yards	Yellow Yards	Par	Men's S.I.	Player A	Player B	Pts +/-	Ladies' Yards	Par	Ladies' S.I.
10	2:09		340	311	4	15	5/1	6/0	-1	296	4	13
11	2:18		174	164	3	7	3/3	4/2	-2	150	3	17
12	2:30		316	304	4	3	4/3	4/3	-2	304	4	3
13	2:45		418	388	4	11	6/1	4/2	-1	377	5	11
14	3:02		530	523	5	1	5/3	6/2	-2	487	5	1
15	3:16		414	391	4	9	5/2	6/0	-3	369	4	5
16	3:29		381	345	4	13	5/2	3/3	-2	325	4	9
17	3:44		455	436	4	5	5/2	6/1	2/1	426	5	7
18	3:57		357	361	4	17	5/1	4/2		342	4	15
In	2:00		3385	3223	36		18	15		3076	38	

Out	1:57		3336	3164	36		21	18		2956	38	
Total	3:57		6721	6387	72		39	33		6032	76	

H'cap: _____

Nett Score: _____

Stableford Points or Par Result: _____

SCORECARD



RULES & ETIQUETTE

1. Out of Bounds is beyond white posts, fences or walls bounding the course.
2. All artificially surfaced roads and paths are immovable obstructions and free drop rules apply. 24-2b
3. PLEASE replace divots, repair ball marks and take bunkers.
4. We request that players extend every courtesy to Coastal Walkers.
5. Kingsbarns Golf Links remains true to the time honoured tradition by operating as a walking facility. All matches should keep up with the match in front and cooperate with our rangers when requested to do so. Golfers not keeping their position on the course will be asked to 'stand aside' to allow faster groups through.

FACE OF PLAY GUIDELINES
We ask that pace of play should take no longer than 4hrs 45mins

Course Design by Kyle Phillips.

SUGGESTED TEES		USGA COURSE RATING	USGA SLOPE RATING
Black	Scratch or better	75.6	141
White	5 or lower h cap	73.4	138
Green	Unrestricted	71.1	132
Blue	Unrestricted	69.9	130
Red	Unrestricted	70.7	126

Kingsbarns Golf Links, Kingsbarns, Fife, KY16 8QD. Tel +44 (0)1334 460860. E-mail: info@kingsbarns.com

www.kingsbarns.com

www.facebook.com/KingsbarnsGolfLinks twitter.com/KingsbarnsGL



PLAYER:						DATE:			PLAYING HANDICAP			
HOLE					STROKE INDEX	JOHN B	PAUL G	PAR	POTTERLY	TIM B		STROKE INDEX
1	418	405	380	380	13	4/3	4/2	4-1	6/1	4/2	295	15
2	200	190	165	165	9	4/2	3/2	3	5/1	2/3	136	13
3	520	513	495	419	15	5/2	6/1	5	5/2	5/2	419	5
4	425	409	389	389	3	5/2	4/3	4	6/1	5/2	299	9
5	426	399	370	370	7	5/2	4/2	4	6/1	5/2	294	7
6	338	320	301	301	11	4/3	4/2	4	5/2	3/3	241	11
7	461	438	431	431	1	5/2	5/2	4	5/2	5/2	364	1
8	168	154	132	132	17	4/1	-10	3	-10	4/1	113	17
9	558	536	500	460	5	6/2	5/2	5-1	-10	7/1	460	3
Out	3514	3364	3163	3047		19		36		18	2621	

						J	P		P	T		
10	394	380	366	366	14	-10	-10	4	4/3	4/2	308	18
11	481	455	399	324	10	5/2	5/1	4-1	5/2	5/1	324	16
12	606	566	538	538	2	6/2	6/2	5	5/3	5/3	442	2
13	148	135	123	123	12	3/3	4/1	3-1	-10	3/2	113	6
14	389	372	339	339	18	4/2	4/2	4-1	-10	4/2	289	14
15	212	185	151	151	6	5/1	3/2	3	4/2	4/2	110	8
16	565	504	481	481	16	5/2	4/3	5-1	5/2	6/1	377	10
17	474	432	408	334	8	6/1	4/2	4	5/2	5/2	334	12
18	444	414	383	383	4	6/1		4+1	6/1	5/2	320	4
In	3713	3443	3188	3039		14		36	15	17	2617	
Out	3514	3364	3163	3047		19		36		18	2621	
Total	7227	6807	6351	6086		33		72		35	5238	

MARKER: _____

Handicap

Nett

PLAYER: _____

Fairmont
ST ANDREWS

Fairmont St Andrews

St Andrews

Fife, KY16 8PN

T: +44 (0)1334 837 023

E: fsagolftimes@fairmont.com

fairmont.com | standrewsbay.com



Fairmont
ST ANDREWS

KITTOCKS COURSE





EVENT: _____

DATE: _____

TIME: _____

NAME: _____

BLUE 75 / 136

WHITE 73 / 132

YELLOW 71 / 128

RED 73 / 130

Please be ready to play when it's your turn and keep up with the game in front.

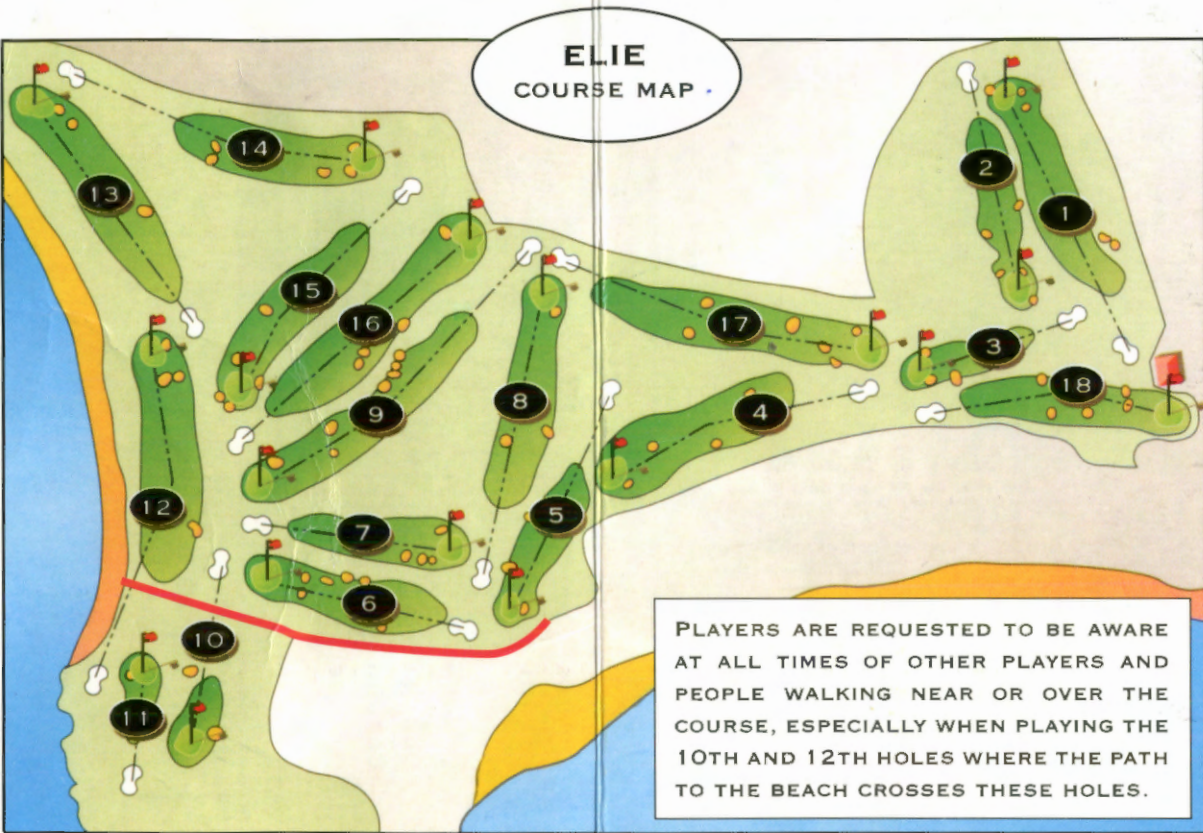
All fairway yardages are to the front edge of the green

HOLE	1	2	3	4	5	6	7	8	9	OUT	10	11	12	13	14	15	16	17	18	IN	TOT	HCP	NETT
BLUE	548	390	163	477	556	159	430	386	468	3577	334	586	425	212	450	462	185	502	459	3615	7192		
WHITE	520	366	145	447	529	142	403	372	440	3364	320	556	413	187	428	428	171	445	440	3388	6752		
YELLOW	504	345	125	423	504	119	381	351	414	3166	292	524	393	167	400	406	150	409	420	3161	6327		
PAR	5	4	3	4	5	3	4	4	4	36	4	5	4	3	4	4	3	4	4	35	71		
STROKE INDEX	9	13	17	1	8	18	7	12	5		14	3	10	16	6	4	15	2	11				
A JOHN	6/2	5/2	3/2	5/2	6/2	4/1	4/3	5/2	4/3	19	-10	7/1	6/1	3/2	6/1	6/1	4/1	5/2	4/3	12	31		
B TIM	7/0	4/2	3/2	5/2	6/2	4/1	6/1	4/2	5/2	14	4/2	5/3	-10	4/2	5/2	5/2	4/1	6/1	4/2	14	28		
C	-1	-1	-1	-1	-1	-1	-2	-2	-3		-2	-1	-2	-3	-2	-1	-1	2/1					
D																							
RED	476	317	112	388	487	100	358	327	381	2946	268	502	376	141	367	387	141	383	393	2958	5904		
RED PAR	5	4	3	5	5	3	4	4	4	37	4	5	4	3	4	5	3	4	5	37	74		

MARKER SIGNATURE: _____

PLAYER SIGNATURE: _____

POINTS: _____



**THE GOLF HOUSE CLUB
VISITORS SCORE CARD**

ELIE FIFE KY9 1AS

TEL: +44 (0)1333 330301

EMAIL: BOOK@GOLFHOUSECLUB.ORG

WEBSITE: WWW.GOLFHOUSECLUB.ORG

LOCAL RULES

1. OUT OF BOUNDS (Rule 27)

- (a) Over any wall or fence bounding the course, including the quarry fence at the 2nd and 3rd holes, the wall behind the 3rd hole and the fence behind the 18th green.
- (b) On or over the surface of the road to the rear of the 17th hole and the paved area fronting the clubhouse and car park.
- (c) Beyond the inside line of white marked sleeper posts to the left of the 4th and 5th holes, the white posts to the left of the 10th hole and behind the 16th hole and in or over the ditches, marked by white posts, to the right of the 2nd and 18th holes and to the left of the 5th, 6th and 17th holes.

2. MOVABLE OBSTRUCTIONS (Rule 24-1)

Stones in bunkers.

3. IMMOVABLE OBSTRUCTIONS (Rule 24-2)

- (a) All seats, shelters, all steps including bunker steps, artificial matting, stiles, wind breaks at 11th and 12th tees, drainage, water and telephone manholes, the wells at the 4th and 5th holes, telephone poles and sleeper posts at the 4th and 5th holes, the boundary stones at the 6th and 7th holes, sockets for movable posts, the surface of the road at the rear of the 4th hole and crossing the 5th, 8th and 9th holes and the gravel paths alongside the 11th 17th and 18th tees.

- (b) All fixed sprinkler heads. In addition, if such an obstruction on or within 2 club-lengths of the putting green of the hole being played intervenes on the line of play between the ball and the hole, the player may obtain relief, without penalty, as follows: If the ball lies off the putting green but not in a hazard and is within 2 club-lengths of the intervening obstruction, it may be lifted, cleaned and dropped at the nearest point to where the ball lay which (a) is not nearer the hole, (b) avoids such intervention and (c) is not in a hazard or on a putting green.

4. GROUND UNDER REPAIR (Rule 25)

Play prohibited. 'Dog Dung' is to be regarded as G.U.R.

5. WATER HAZARD (Rule 26)

The ponds to the left of the 18th hole (as defined by yellow stakes).

6. LATERAL WATER HAZARD (Rule 26)

The beach adjoining the 10th, 11th, 12th and 13th holes (as defined by red stakes).

7. INTEGRAL PARTS OF THE COURSE

The wall at the 13th, 14th and 15th holes, the path crossing the 10th and 12th holes and the path to the left of the 11th and 12th holes.

8. DISTANCE MEASURING DEVICES (RULE 14-3)

They are permitted in accordance with the note under rule 14-3 and the local rule as posted in the starter's office and on the club notice board.

Please - replace divots, repair pitch marks and let faster matches through.

COMPETITION										WHITE SSS 70	
DATE		TIME	ENTRY No			HANDICAP	STROKES REC'D		YELLOW SSS 69		
PLAYER A										RED/LADIES SSS 73	
PLAYER B											
HOLE	MARKER'S SCORE	NAME	WHITE YARDS	YELLOW YARDS	PAR	STROKE INDEX	PLAYER'S SCORE	W = + L = - H = 0 POINTS	RED YARDS LADIES TEES	PAR	STROKE INDEX
1	4/2	STACKS	420	406	4	12	5/2	□	400	5	11
2	4/3	HIGH HOLE	284	284	4	3	6/0	+1	282	4	7
3	5/0	WICKETS	214	204	3	17	3/2	□	148	3	17
4	5/2	PROVOST	378	372	4	6	6/1	+1	367	4	1
5	5/1	DOCTOR	365	305	4	13	6/1	+1	259	4	15
6	4/3	QUARRIES	316	306	4	7	3/4	□	310	4	9
7	3/3	PEGGY'S	252	241	4	15	3/3	□	217	3	13
8	5/2	NEUK	382	370	4	1	5/2	□	345	4	3
9	5/1	MARTIN'S BAY	440	432	4	10	6/1	□	433	5	6
17 OUT			3051	2920	35		17		2761	36	

PLEASE AVOID SLOW PLAY AT ALL TIMES

10	4/2	LUNDAR LAW	288	278	4	9	6/1	+1	239	4	16
11	3/2	SEA HOLE	131	131	3	18	3/2	+1	133	3	18
12	4/3	BENTS	466	436	4	2	4/3	+1	415	5	5
13	5/1	CROUPIE	380	371	4	11	5/2	□	355	4	2
14	4/3	SUCKIELEA	414	402	4	5	5/2	+1	391	4	8
15	4/2	COALHILL	338	303	4	16	5/1	+2	321	4	14
16	5/2	GRANGE	407	397	4	4	5/2	+2	373	4	4
17	6/0	FERRY	439	434	4	14	4/2	+1	433	5	12
18	4/3	HOME	359	337	4	8	5/2	20P	347	4	10
IN			3222	3089	35		17		3007	37	
OUT			3051	2920	35		17		2761	36	
TOTAL			6273	6009	70		34		5768	73	

10
35

STABLEFORD
POINTS OR
PAR RESULT

HOLES WON
HOLES LOST
RESULT

HANDICAP
NETT

MARKERS SIGNATURE PLAYERS SIGNATURE

LOCAL RULES

1. Out of Bounds (Rule 27-1)

- (a) Beyond any wall, fence, concrete block or line of white stakes, or on or beyond any white line, bounding the course.
- (b) In or beyond the trench at the 1st tee demarcated by black and white stakes.
(Note: Black and white stakes are movable obstructions)
- (c) Where concrete blocks are present to the left of the 2nd and 4th holes, beyond the white markings on the course side of the concrete blocks.
- (d) Beyond the fence or white stakes behind the 5th green.
- (e) Beyond the line of white stakes to the right of the 6th, 7th and 8th holes.
- (f) Beyond the line of white stakes to the right of the 9th hole and behind the 12th green.
- (g) Beyond the line of white stakes to the right of the 13th hole and behind the 13th green.
- (h) Beyond the line of white stakes to the right of the 14th hole and beyond the fence or white stakes behind the 14th green.
- (i) Beyond the line of white stakes to the left of the 15th, 16th 17th and 18th holes.
- (j) Within the pumphouse area to the left of the 17th hole.
- (k) At the 18th hole, on or beyond the white line behind the green.

2. Stones in Bunkers

Stones in bunkers are movable obstructions (Rule 24-1 applies).

3. Roads and Paths

All roads and paths, except those with rubber matting, are integral parts of the course: the ball must be played as it lies or deemed unplayable (Rule 28). Rubber matted paths are immovable obstructions (Rule 24-2 applies), but see the Exception below.

Exception:

There is no free relief if the ball lies on a rubber-matted path within the margins of a water hazard or lateral water hazard: the player must play the ball as it lies or proceed under Rule 26 (Water Hazards).

4. Integral Parts of the Course

All artificially surfaced banks within water hazards or lateral water hazards are integral parts of the course.

5. Ground Under Repair; Play Prohibited

If a player's ball lies in an area marked as ground under repair (defined by closed white lines), or if such an area interferes with the player's stance or the area of his intended swing, the player must take relief under Rule 25-1.

6. Immovable Obstructions Close to the Putting Green (e.g. Fixed Sprinkler Heads)

The Specimen Local Rule in Appendix I in the Rules of Golf is in effect.

7. Distance Measuring Devices

The Specimen Local Rule in Appendix I of the Rules of Golf permitting the use of distance measuring devices is in effect. Penalty for breach: disqualification.

Penalty for Breach of Local Rules (unless otherwise provided):

Match play - Loss of hole; Stroke play - Two strokes.



LUNDIN GOLF CLUB

Est. - 1868



Golf Road, Lundin Links, Fife, KY8 6BA

Professional: 01333 320051

Secretary: 01333 320202

e-mail: secretary@lundingolfclub.co.uk

Venue of 2010 Junior Open Championship

www.lundingolfclub.co.uk

COMPETITION					S.S.S.	
DATE	START TIME	FINISH TIME	Handicap	Strokes Rec'd	White 71 <input type="checkbox"/> Yellow 70 <input type="checkbox"/> Red 74 <input type="checkbox"/>	
Player A					PLEASE TICK	
Player B <i>DR</i>						

Hole	Marker's Score	Max Time	Name	White Yards	Yellow Yards	Par	Score		W = + L = 1 H = 0 Points	Red Yards	Par	Stroke Index
							A	B				
1	5/2	0.15	High	420	403	4	5/2	□	346	4	5	
2	5/1	0.27	Quarry	345	339	4	5/2	-1	326	4	11	
3	3/3	0.38	Bents	331	312	4	5/1	□	269	4	14	
4	5/2	0.50	Mile Dyke	455	415	4	4/3	-1	395	4	1	
5	3/2	1.00	Silverburn	141	128	3	4/1	□	106	3	18	
6	4/2	1.12	Spectacles	331	325	4	4/3	-1	301	4	9	
7	5/1	1.24	Burn *	272	266	4	4/2	-2	247	4	16	
8	4/3	1.38	Aithernie	367	355	4	5/2	-1	325	4	7	
9	7/1	1.54	Long	555	546	5	7/1	-1	526	5	3	
OUT	17			3217	3089	36	17		2841	36		

PLEASE AVOID SLOW PLAY AT ALL TIMES

10	5/1	2.06	Thorn Tree	352	348	4	6/1	-1	332	4	10
11	4/3	2.21	Racecourse	464	447	4	5/2	□	420	5	2
12	4/1	2.33	Sunnybraes	149	140	3	3/2	-1	126	3	17
13	6/2	2.50	Neil Shaw	499	490	5	6/2	-1	444	5	8
14	3/2	3.02	Pefection	177	170	3	4/1	□	155	3	15
15	5/2	3.17	Heather	420	417	4	5/2	□	409	5	4
16	4/2	3.29	Trows	311	280	4	5/2	+1	261	4	13
17	5/1	3.43	Station	343	330	4	5/2	□	316	4	12
18	4/3	3.58	Home	439	427	4	TR 5/2	+1	367	4	6

<div style="border: 1px solid black; padding: 5px; display: inline-block;"> 17 34 </div>	Stableford points or par result	IN	3154	3049	35	17	16		2830	37	
		OUT	3217	3089	36	17	17		2841	36	
		TOTAL	6371	6138	71	34	33		5671	73	

H'CAP				Holes won.....
NETT				Holes lost.....
				Result

Marker's Signature Player's Signature



LOCAL RULES

1 Out of Bounds (Rule 27-1)

- (a) Beyond any fence, line of white stakes or white line bounding the course.
- (b) In or beyond any trench marked by white posts.
- (c) Over Barry Burn to the left of the first hole.

2 Water Hazards (Rule 26)

The Barry Burn, Jockie's Burn and all other ditches are water hazards. Water Hazards are defined by yellow stakes or lines. Lateral Water Hazards are defined by red stakes or lines.

3 Fixed Sprinkler Heads

All fixed sprinkler heads are immovable obstructions and relief from interference by them may be obtained under Rule 24-2. In addition, if such an obstruction on or within two club-lengths of the putting green of the hole being played intervenes on the line of play between the ball and the hole, the player may obtain relief, without penalty, as follows: If the ball lies off the putting green but not in a hazard and is within two club-lengths of the intervening obstruction, it may be lifted, cleaned and dropped at the nearest point to where the ball lay which (a) is not nearer the hole, (b) avoids such intervention and (c) is not in a hazard or on a putting green.

Penalty for breach of Local Rule 3:

Match Play - Loss of hole; Stroke Play - Two strokes

4 Made-up Roads and Paths

Relief may be obtained under Rule 24-2 (b).

5 Bunker Faces

The face of a bunker which consists of a stacked turf is not a "closely mown area". As the bunker face is not considered part of the bunker, this means that a ball embedded in a stacked face can be played as it lies or declared unplayable (rule 28) the ball does not need to be dropped in the bunker under rule 28b and c.

GOLF COURSE ADMINISTRATION ADDRESS

Links Management Committee, Golf Centre, Links Parade
Carnoustie DD7 7JE. Telephone (01241) 802270

CGLMC Limited a charity registered in Scotland SC045236
www.carnoustiegolflinks.co.uk

CONSTITUENT CLUBS OF THE LINKS MANAGEMENT COMMITTEE

The Carnoustie	1842	Caledonia	1887
Dalhousie	1868	New Taymouth	1906
Carnoustie Ladies	1873	Carnoustie Mercantile	1968

MEDICAL EMERGENCY PHONE LINE 01241 802299

FOLLOW US ON  [@carnoustiegolf](https://twitter.com/carnoustiegolf)



THE CARNOUSTIE GOLF LINKS GENTLEMEN'S SCORE CARD



Championship Course

COMPETITION		DATE	Please indicate which tee used		Slope Rating
Player A		H/C	PAR 72	SSS 75	139
Player B		H/C	PAR 70	SSS 74	135
Player C		H/C	PAR 70	SSS 71	130
Player D		H/C			

Hole	Visitor's Timing	Hole Names	Yards	Yards	Yards	Par	Stroke Index	Score				
								A	B	C	D	
1	0'14	Cup	401	389	364	4	10	5/1	5/2	6/0	5/1	-1
2	0'30	Gulley	435	407	382	4	4	5/2	6/1	4/3	4/3	0
3	0'43	Jockie's Burn	351	331	318	4	14	5/1	5/1	4/2	4/2	+1
4	0'57	Hillocks	375	364	358	4	16	4/2	-0	5/1	5/1	+2
5	1'11	Brae	387	369	350	4	12	5/1	5/2	4/2	4/2	+2
6	1'28	Hogan's Alley	520	500	485	5	2	6/2	7/1	7/1	5/3	+3
7	1'41	Plantation	394	373	350	4	8	4/2	5/2	5/1	4/3	+4
8	1'55	Short	167	157	133	3	18	3/2	4/1	3/2	4/1	+4
9	2'09	Railway	413	416	403	4	6	4/2	5/2	4/2	5/2	+4
			3443	3306	3142	36	OUT	15	12	14	18	

PLEASE AVOID SLOW PLAY AT ALL TIMES

10	2'23	South America	446	417	332	4	3	3/4	5/2	4/3	4/3	+5
11	2'37	John Philp	362	351	330	4	15	-0	5/1	5/1	5/1	+5
12	2'51	Southward Ho	479	407	395	5	9	4/2	6/1	4/2	5/1	+5
13	3'05	Whins	161	141	118	3	17	7/1	3/2	3/2	4/1	+4
14	3'19	Spectacles	476	459	440	5	1	5/2	3/4	5/2	6/1	+3
15	3'33	Lucky Slap	459	437	418	4	7	4/2	5/2	4/2	5/2	+3
16	3'45	Barry Burn	245	235	212	3	13	4/1	4/2	4/1	3/2	3/2
17	3'59	Island	433	421	374	4	5	5/2	6/1	5/2	5/2	-2
18	4'13	Home	444	421	383	4	11		5/2		5/1	

3505	3289	3002	36	IN		17	14
3443	3306	3142	36	OUT		12	18
6948	6595	6144	72	TOTAL		29	32



HANDICAP

NETT

DL JF JM TR

Marker's Signature

Player's Signature

Panmure Golf Club, Barry, Angus, DD7 7RT
Telephone: 01241 855 120 Fax: 01241 859 737 www.panmuregolfclub.co.uk

Members and visitors are reminded that playing and/or spectating golf is entirely at their own risk. Panmure Golf Club cannot be held responsible for any injury however caused. We strongly advise ALL members / guests to have valid and appropriate insurance. Entering the course or surrounding areas is deemed as acceptance of this condition.

The Course Safety Code is displayed on the Notice Board in the Clubhouse.

150 yard (137 metre) stakes are measured to middle of greens.

The Club allows the use of devices which measure or gauge distances only.

7. DISTANCE-MEASURING DEVICES

All cottages, buildings and shelters. All fixed sprinkler heads. Relief from interference may be taken without penalty. However, the fact that the movable obstruction interferes on the line of play is not in itself interference under this rule, except when the obstruction is a fixed sprinkler head or within two club-lengths of the green or the hole being played in which case relief may be taken provided that if the ball is off the green it is within two club-lengths of the obstruction and it is not in a hazard.

6. IMMOVABLE OBSTRUCTIONS

Stones in bunkers are movable obstructions (Rule 24-1 applies).

5. STONES IN BUNKERS

Young trees less than one club-length in height, or of any height if staked, are "Ground Under Repair" and relief under Rule 25-1b. MUST be taken.

4. YOUNG TREES

All roads and paths are integral parts of the Course and the ball should be played as it lies except when a ball lands on the access road behind the 18th tee up to the left side of the 15th fairway or on the road which crosses the 3rd and 16th fairways. These roads have been deemed as immovable obstructions and relief may be taken without penalty (Rule 24-2 applies).

3. ROADS AND PATHS

The Buddon Burn and all ditches.

2. WATER HAZARDS

A ball is out of bounds if it lies: Over any fence of the Course, in or over the trench marked by black and white stakes on the right of the 10th and 18th holes or on the car park or blaze path between the 1st and 18th holes.

1. OUT OF BOUNDS

PANMURE GOLF CLUB LOCAL RULES



PANMURE
GOLF CLUB

Established in 1845

COMPETITION:

Please indicate which tee used.



DATE:

TIME:

Handicap

Strokes Rec'd

PAR	70
SSS	72
PAR	70
SSS	71
PAR	70
SSS	70
PAR	70
SSS	69
PAR	74
SSS	74

Player A

Player B

Hole	Marker's Score	Name	Blue Yards	White Yards	Yellow Yards	Green Yards	Par	Stroke Index	TR A	Score B	Nett or Points	Red Yards	Par	Stroke Index
1		MAULE	302	302	288	264	4	15	4/2	5/1	+1	264	4	17
2		LOCHSIDE	488	488	476	451	5	11	5/2	5/3	□	451	5	11
3		PINES	404	404	376	358	4	5	5/2	5/2	□	358	4	1
4		RAVENSBY	402	402	389	350	4	3	5/2	5/2	□	339	4	3
5		PUNCHBOWL	144	144	141	141	3	17	5/0	3/2	-1	138	3	15
6		HOGAN	414	390	369	352	4	1	6/1	5/2	-2	342	5	5
7		EASTWARDS	449	413	404	389	4	7	4/3	4/3	-2	389	5	13
8		DUNES	361	361	336	336	4	9	6/0	5/2	-3	309	4	9
9		MONUMENT	180	175	168	156	3	13	4/1	3/3	-4	147	3	7
			3144	3079	2947	2797	35	OUT	13	20	-4	2737	37	

PLEASE AVOID SLOW PLAY AT ALL TIMES

10		LUCKNOWE	436	405	394	380	4	2	5/2	6/1	-3	370	5	18
11		SANDS	168	168	160	152	3	18	3/2	4/1	-2	152	3	10
12		BUDDON BURN	396	361	341	332	4	8	4/3	4/3	-2	322	4	2
13		HOMeward	396	396	382	365	4	10	5/1	4/3	-3	365	5	14
14		LUCKY DADDY	533	533	519	490	5	4	5/3	6/2	-2	463	5	4
15		DALHOUSIE	234	234	226	214	3	14	5/0	3/2	-3	214	3	12
16		COTTAGE	381	381	363	347	4	16	5/1	5/1	-3	347	4	8
17		OLD ROAD	401	401	392	385	4	6	5/2	5/2		385	4	6
18		CALCUTTA	462	402	389	346	4	12	4/2	5/2		329	4	16
			3407	3281	3166	3011	35	IN	16	17		2947	37	
			3144	3079	2947	2797	35	OUT	13	20		2737	37	
			6551	6360	6113	5808	70	TOTAL	29	37		5684	74	

Stableford Points
OR PAR RESULT

Stableford Points
OR PAR RESULT

HANDICAP

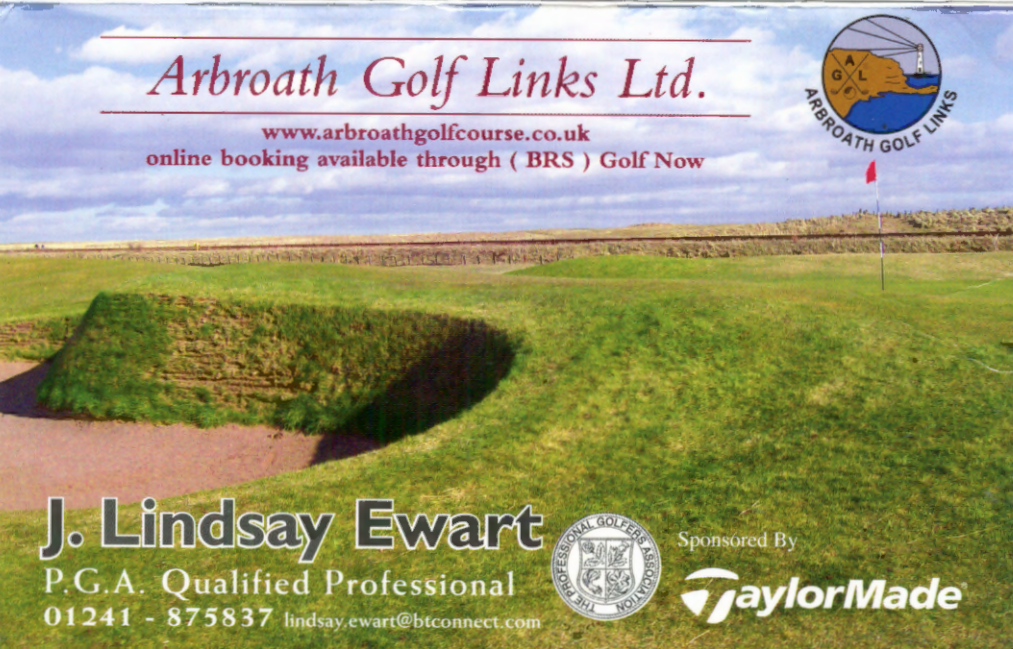
NETT

Holes won.....
Holes lost.....
Result.....

Marker's Signature.....

Player's Signature.....

Miked
COOLPIX 53700



Arbroath Golf Links Ltd.

www.arbroathgolfcourse.co.uk
 online booking available through (BRS) Golf Now



J. Lindsay Ewart

P.G.A. Qualified Professional
 01241 - 875837 lindsay.ewart@btconnect.com



Sponsored By



AR BROATH GOLF LINKS LTD. LOCAL RULES

1. **Stones in the bunkers** are movable obstructions - Rule 24-1.

2. **Water Hazards - Rule 26.**
 Parts of burns marked with yellow stakes or lines are water hazards. A ball lying between the yellow lines on bridges is deemed to be in the burn.

Lateral Water Hazard at the 4th Hole.
 A ball coming to rest in the burn between the Red posts shall be dropped within one club-length, from the point of entry, on the greenside of the burn, with a one shot penalty (Local Rule).

3. **Ground Under Repair - Rule 25-1.**
 All tractor paths on the course are deemed to be ground under repair, the ball should be dropped within one club-length of the nearest point of relief.

4. **Immovable Obstructions - Rule 24-2.**
 Individual young trees, all gravel and chipped paths. The wall at the 9th tee and the stone bridge are immovable objects and are governed by Rule 24-2b1. Ball to be dropped within one club-length of the nearest point of relief.

5. **Out of Bounds - Rule 27-1.**
 A ball over all boundary fences on the course is out of bounds, also a ball landing in or beyond the ditch marked by white posts to the right of the 18th fairway and behind 18th green.

6. **Sprinkler Heads, Manhole Covers and Golf Course Furniture.**
 A ball must be lifted and dropped at the nearest point to where the ball lay that (a) is not nearer the hole, (b) avoids intervention and (c) is not in a hazard or on a putting green.

"B" if the ball lies on the putting green and an immovable obstruction is within two club-lengths of the green intervenes on the line of the putt, the player may take relief as follows: The ball must be lifted and placed at the nearest point to where the ball lay as per the above rules (A), (B) & (C).

INFORMATION

Visitors who are bona-fida golfers i.e. purchasing a green fee ticket are extended courtesy of the Clubhouse and all its facilities. Rakes should be returned to the centre of the bunkers after use.

Flags on the course are different colours. Red for the front of the green, White for the middle of the green and Blue for the back of the green.

All groups of golfers falling more than one hole behind MUST allow the following group through.

A round of golf should take NO more than 3 - 3 1/2 hours.



COMPETITION

Please indicate which tee used

DATE	TIME	ENTRY NO	Handicap	Strokes Rec'd	PAR SSS	70 70
Player A					PAR SSS	68 68
Player B					PAR SSS	71 72

Hole	Marker's Score	Name	White Yards	Par	Stroke Index	Yellow Yards	Par	Score		W = + L = - O = 0 Points	Ladies Yards	Par	Stroke Index
								A	B				
1		Francie's Well	367	4	10	360	4	6/0	6/1	-1	347	4	10
2		Balcaithie	481	5	3	444	4	5/3	6/2	0	401	5	3
3		The Dennie	348	4	12	334	4	4/2	5/2	0	289	4	12
4		Lint Pot	166	3	16	153	3	3/2	4/1	+1	114	3	16
5		Mains of Kelly	405	4	1	389	4	6/1	6/1	+1	341	4	1
6		Inverpeffer	375	4	7	364	4	4/3	6/1	+2	348	4	7
7		Corse Hill	159	3	17	155	3	3/2	2/3	+1	135	3	17
8		Currie End	372	4	5	354	4	3/4	5/2	+2	326	4	5
9		The Shelter	373	4	9	363	4	6/0	5/2	+1	335	4	9
OUT			3046	35		2916	34	17	15		2636	35	

PLEASE AVOID SLOW PLAY AT ALL TIMES

10		Balmirmer	407	4	4	399	4	5/2	5/2	+1	406	5	4
11		Johnnie's Howe	326	4	15	313	4	5/1	4/2	0	309	4	15
12		Threap Neuk	331	4	11	290	4	4/2	5/2	0	269	4	11
13		Dowrie	412	4	2	368	4	5/2	4/3	-1	363	4	2
14		The Secretary	239	3	14	200	3	4/1	5/0	0	189	3	14
15		Penston Burn	355	4	8	343	4	6/1	5/2	-1	318	4	8
16		The Dunes	182	3	18	151	3	3/2	3/2	-1	128	3	18
17		The Ditch	495	5	6	447	4	7/1	5/3	2/1	406	5	6
18		Wormie Hill	407	4	13	399	4	5/1	4/3		360	4	13

	STABLEFORD POINTS OR PAR RESULT	IN	3154	35		2910	34	13	19		2748	36	
		OUT	3046	35		2916	34	17	15		2636	35	
		TOTAL	6200	70		5826	68	30	34		5384	71	

HANDICAP
NETT

Holes won
Holes lost
Result

Marker's Signature Player's Signature



LOCAL RULES

1. Out of Bounds (Rule 27-1)

- a) Beyond any fence, line of white stakes or white line bounding the course.
- b) In or beyond any trench marked with white posts.

2. Water Hazards (Rule 26)

The Barry Burn, Jockies Burn and all other ditches are water hazards. Water hazards are defined by yellow stakes or lines. Lateral hazards are defined by red stakes or lines.

3. Fixed Sprinkler Heads and Protective Fences

All fixed sprinkler heads and protective fences are immovable obstructions and relief from interference by them may be obtained under Rule 24-2. In addition, if such an obstruction on or within two club-lengths of the putting green of the hole being played intervenes on the line of play between the ball and the hole, the player may obtain relief, without penalty, as follows. If the ball lies off the putting green but not in a hazard and is within two club-lengths of the intervening obstruction, it may be lifted, cleaned and dropped at the nearest point to where the ball lay which a) is not nearer the hole b) avoids such intervention and c) is not in a hazard or on the putting green. Penalty for breach of local Rule 3: Match Play - Loss of Hole; Stroke Play - Two Strokes.

4. Made up Roads and Paths - Relief may be obtained under Rule 24-2(b).

5. Bunker Faces

The face of a bunker which consists of a stacked turf is not a "closely mown area". As the bunker face is not considered part of the bunker, this means that a ball embedded in a stacked face can be played as it lies or declared unplayable (Rule 28). The ball does not need to be dropped in the bunker under Rule 28b and c.

GOLF COURSE ADMINISTRATION ADDRESS

Golf Centre, Links Parade, Carnoustie DD7 7JE
Tel 01241 802270

CGLMC Limited is a charity registered in Scotland SCO45236
www.carnoustiegolflinks.co.uk

CONSTITUENT CLUBS

The Carnoustie 1842	Caledonia 1887	Dalhousie 1868
New Taymouth 1906	Carnoustie Ladies 1873	Mercantile 1968

MEDICAL ASSISTANCE PHONE LINE 01241 802299

Follow us on Twitter @carnoustiegolf



Carnoustie Golf Links



Burnside Course

COMPETITION

Please indicate which tee used.

DATE		H'cap		TIME				H'cap		PAR	SSS	68 M	70 M
A				C						PAR	SSS	68 M	69 M
B				D						PAR	SSS	71 L	72 L
Hole	Name	Gentlemen's		Par	Stroke Index	Player's Score				Ladies Yards	Par	Stroke Index	
		Yards	Yards			A	B	C	D				
1	Peninsula	319	309	4	18	4/2	4/2	□		301	4	17	
2	Ravensby	456	441	4	4	5/2	5/2	□		437	5	3	
3	Fence	172	161	3	16	4/1	3/2	-1		156	3	13	
4	South America	457	445	4	2	5/2	6/1	□		435	5	1	
5	Burn	158	146	3	10	4/1	4/2	-1		139	3	9	
6	Camp	337	327	4	14	4/2	5/1	□		295	4	11	
7	Shelter	362	345	4	12	5/1	4/3	-1		337	4	5	
8	Battery	424	414	4	6	4/3	4/3	-1		366	4	7	
9	Grog	163	151	3	8	4/2	5/1	□		127	3	15	
		2848	2739	33	OUT	16	17			2593	35		

PLEASE AVOID SLOW PLAY AT ALL TIMES

10	Kopje	330	318	4	15	3/3	4/2	+1		282	4	18
11	Deil's Ha'	372	355	4	7	5/2	5/2	+1		351	4	8
12	Heather	383	363	4	13	6/0	5/2	□		347	4	10
13	Punchbowl	379	364	4	5	5/2	5/2	□		346	4	6
14	Scoup	228	212	3	1	3/3	4/2	+1		168	3	14
15	Sou'western	497	487	5	11	5/2	6/2	+1		455	5	2
16	Whins	171	171	3	9	4/1	3/3	□		141	3	16
17	Sinkies	461	441	4	3	5/2	6/1	+1		436	5	4
18	Lismore	303	290	4	17	4/2	5/1	26P		281	4	12
		3124	3001	35	IN	17	17			2807	36	
		2848	2739	33	OUT	16	17			2593	35	
		5972	5740	68	TOTAL	33	34			5400	71	

01883 344244

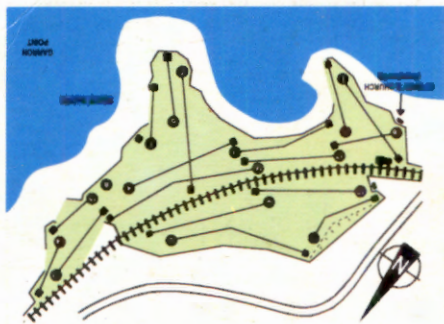
Stableford Points

STABLEFORD POINTS

HANDICAP NETT

MEDICAL ASSISTANCE PHONE LINE 01241 802299

Marker's Signature Player's Signature



1. **OUT OF BOUNDS**
The course is bounded by walls, fences, white posts and a shallow trench on the seaward side of the 13th and 14th fairways. A ball in or beyond this trench is out of bounds.
2. **IMMOVABLE OBSTRUCTIONS**
Huts, seats, shelters, ball washers, pop-up sprinklers, water tank, made up paths, metallic covers, staked trees, fixed litter bins, fixed steps, tee marker boards, information signs, marker posts at 4th, 5th, 14th, 16th greens and the mesh fencing at the Rear of 3rd tee. Relief from these may be taken by reference to Rule 24-2.
3. Except in Club or Open competitions, a ball played onto a tee must be lifted and dropped off the tee, but not nearer the hole being played.
4. All fixed sprinkler heads are immovable obstructions. If such an obstruction on or within two club lengths of the putting green interferes on the line of play between the ball and the hole and if the ball lies within two club lengths of the obstruction but not on the putting green or in a hazard, it may be lifted without penalty, cleaned and dropped at the nearest point to where it lay which is not nearer the hole, avoids such intervention and is not a hazard or on a putting green.
5. Stones may be removed from bunkers. If the ball is moved in so doing it shall be replaced without penalty.
6. Gully rule. If a ball lying above the line of orange marker stakes and below the front of the 15th green is declared unplayable, in addition to the procedure prescribed in Rule 28, it may be dropped at the dropping zone nearest the ball, under penalty of one stroke.
7. Any other rules published on the main notice board.

STONEHAVEN GOLF CLUB

Stonehaven Golf Club

(Founded 1888)

Cowie, Stonehaven AB39 3RH

Tel: (01569) 762124 Fax: (01569) 765973

E-mail: info@stonehavengolfclub.com



COMPETITION	H'CAP	STROKES REC'D	TEES	PAR	S.S.S.	PLEASE TICK
PLAYER A			White	66	65	<input type="checkbox"/>
PLAYER B			Yellow	66	64	<input type="checkbox"/>
DATE:	TIME:		Ladies	67	67	<input type="checkbox"/>

MARKER'S SCORE	HOLE		WHITE YARDS	YELLOW YARDS	PAR	S.I.	TR SCORE		NETT SCORE	W = + L = - H = 0 POINTS	RED YARDS	PAR	S.I.
	A	B											
	1	Ruthery	305	300	4	12	4/2	4/3	-1		280	4	13
	2	Fault	203	198	3	4	5/1	4/2	-2		131	3	7
	3	Kingsacre	331	326	4	14	5/1	4/2	-3		319	4	3
	4	Garron	364	359	4	8	6/1	5/2	-4		346	4	11
	5	Jake's View	376	376	4	2	5/2	5/2	-4		376	4	1
	6	Glack	190	171	3	16	4/1	3/2	-5		186	3	15
	7	Skatie Brow	170	165	3	10	3/2	4/2	-5		156	3	5
	8	Ridges	159	132	3	18	3/2	4/1	-4		129	3	17
	9	Cowie	398	391	4	6	5/2	5/2	-4		378	4	9
	OUT		2496	2418	32		14	18			2301	32	

Please avoid slow play & allow faster players through

	10	Slughead	329	294	4	9	5/1	5/2		-5	312	4	10
	11	Denhead	272	257	4	17	5/1	4/2		-6	271	4	14
	12	Logie	416	396	4	1	4/3	4/3		-6	406	5	2
	13	Red Man	252	247	4	7	5/2	4/3		7/5	130	3	16
	14	Auld House	169	149	3	13	4/1	4/2			153	3	6
	15	Gully Cup	161	156	3	3	3/3	4/2			75	3	18
	16	Rashes	482	447	5	15	6/1	7/0			438	5	8
	17	Lairds View	315	268	4	5	5/2	4/3			278	4	4
	18	Home	211	172	3	11	3/2	4/2			208	4	12

HOLES WON +	
HOLES LOST -	
RESULT + -	

IN	2607	2386	34		16	19		2271	35
OUT	2496	2418	32		14	18		2301	32
TOTAL	5103	4804	66		30	37		4572	67

Handicap
Nett Score

STABLEFORD POINTS
OR PAR RESULT

Marker's Signature

Player's Signature

LOCAL RULES

1. OUT OF BOUNDS (Rule 27-1)

- a) Beyond any boundary fence.
- b) Within the white stakes defining the practice area between the 1st and 18th holes.
- c) Within the white stakes defining the Greenkeepers' buildings and Links Farm.
- d) Beyond the white stakes or lines behind the 9th green.
- e) The car park and paths around the Clubhouse and Professional's shop.

2. WATER HAZARDS (Rule 26)

- a) The parts of burns defined by yellow stakes or lines are water hazards.
- b) The beach, parts of burns defined by red stakes or lines and all unmarked ditches are lateral water hazards.

3. GROUND UNDER REPAIR (Rule 25)

- a) All areas bounded by white lines or designated as ground under repair.
- b) Significant ruts made by vehicle tyres (not faint impressions).

4. STONES IN BUNKERS

Stones in bunkers are movable obstructions. (Rule 24-1)

5. IMMOVABLE OBSTRUCTIONS (Rule 24-2)

Immovable obstructions include all artificially surfaced roads and paths, any wooden edges, steps constructed of sleepers and green 150 yards marker posts.

6. IMMOVABLE OBSTRUCTIONS CLOSE TO PUTTING GREEN.

The specimen Local Rule in the Rules of Golf is in effect - See page 146.

7. DISTANCE-MEASURING DEVICES (Rule 14-3)

The use of distance-measuring devices for the purpose of assessing distance only is permitted, strictly in accordance with Rule 14-3.

8. TEMPORARY RULES

Any temporary local rules defined on the notice board and in the Professional shop.

PENALTY FOR BREACH OF A LOCAL RULE:

Match Play - Loss of Hole,

Stroke Play - Two Strokes.




THE
MARCLIFFE

SPA, STEAK AND
SEAFOOD RESTAURANT

T: 01224 861000

www.marcliffe.com



1780

*Royal Aberdeen
Golf Club*



Balgownie Links

COMPETITION *WINDRAY WOODS WISBRO*

Rating Slope Please indicate which tee used.

DATE	H'cap	Strokes Rec'd	TIME	H'cap	Strokes Rec'd	74.8	144	SSS 75
A			C			73.0	141	SSS 73
B			D			71.8	138	SSS 72
						70.8	136	SSS 71/77
						76.8	145	SSS 71/77
						66.5	115	SSS 66/72
						72.0	133	SSS 66/72

Hole	Name	Blue Yards	White Yards	Yellow Yards	Red Yards	Par	Stroke Index	Green Yards	Par	A Score	B Points	C 4	D
1	FIRST	409	409	399	386	4/5	9	386	4/5	5/1		5/2	-1
2	POOL	595	567	549	544	5	3	427	4/5	5/3		6/2	0
3	COTTAGE	240	218	210	207	3	13	150	3	4/1		4/2	-1
4	VALLEY	464	430	377	375	4/5	1	375	4/5	7/0		-/0	-1
5	ROAD	347	324	291	285	4	15	219	4	4/2		5/1	0
6	SCOTSTON	491	491	473	455	5	11	407	4/5	7/0		6/2	-1
7	BLACKDOG	428	374	367	355	4	7	294	4	5/2		5/2	-1
8	RIDGE	147	147	139	133	3	17	133	3	4/1		3/2	-2
9	END	465	454	436	431	4/5	5	373	4	5/2		6/1	-1
	OUT	3586	3414	3241	3171	36/39		2764	34/38	12		14	

PLEASE AVOID SLOW PLAY AT ALL TIMES

10	SHELTER	354	344	338	300	4	8	241	4	5/2		5/2	-1
11	SHORT	165	165	159	153	3	16	153	3	4/1		3/2	-2
12	PLATEAU	534	494	474	468	5	4	411	4/5	5/3		6/2	-1
13	BLIND	436	397	366	360	4	12	260	4	4/2		4/3	-2
14	DYKE	441	391	382	381	4/5	2	320	4	6/1		-/0	-1
15	WELL	374	345	331	282	4	14	282	4	4/2		6/0	0
16	HILL	411	379	371	362	4	6	291	4	5/2		-/0	+1
17	POTS	181	175	165	135	3	18	135	3	4/1		2/3	0
18	HOME	440	433	426	422	4/5	10	342	4	4/2		5/2	0
	IN	3336	3123	3012	2863	35/37		2435	34/35	16		14	
	OUT	3586	3414	3241	3171	36/39		2764	34/38	12		14	
	TOTAL	6922	6537	6253	6034	71/76		5199	68/73	28		28	

STABLEFORD POINTS OR PAR RESULT

HANDICAP

NETT

Marker's Signature

Player's Signature

LOCAL RULES

1. Water Hazards & Lateral Water Hazards (Rule 26)
 - a) Water hazards are defined by yellow stakes.
 - b) Lateral water hazards are defined by red stakes.
 - c) The beach is a lateral water hazard. The Marram grasses bordering the beach are deemed to be "through the green," i.e., not part of the Lateral Water Hazards.
2. Ground Under Repair (Rule 25-1): Any area encircled by a white line.
3. Immovable Obstructions (Rule 24-2): All artificially-surfaced roads and paths.
4. Stones in Bunkers: Stones in bunkers are movable obstructions (Rule 24-1 applies).
5. Bunker Faces: the face of a bunker that consists of stacked turf is deemed not to be a "closely-mown area" (Rule 25-2).
6. Immovable Obstructions Close to Putting Green (e.g., Fixed Sprinkler Heads): The specimen Local Rule in the Rules of Golf is in effect — see page 130.
7. Wrong Putting Green (Rule 25-3): The practice putting green.
8. Distance Measuring Devices: The specimen Local Rule in the Rules of Golf is in effect — see page 136.

Penalty for breach of local rules:

Match Play – Loss of Hole; Stroke Play – Two Strokes.



TRUMP

International Golf Links

SCOTLAND

TRUMP INTERNATIONAL GOLF LINKS

Menie Park Lodge, Menie Estate

Balmedie, Aberdeenshire, Scotland AB23 8YE

+44 (0) 1358 743 300

www.trumpgolfscotland.com

HOLE	1	2	3	4	5	6	7	8	9	OUT	10	11	12	13	14	15	16	17	18	IN	TOT	HCP	NETT
BLACK	541	443	205	563	386	183	281	500	470	3572	573	470	435	229	445	392	195	466	651	3856	7428		
GOLD	519	419	188	529	371	183	273	487	447	3416	536	451	404	197	410	376	187	421	627	3609	7025		
BLUE	491	412	165	513	353	170	246	463	427	3240	495	453	367	178	376	323	180	404	586	3362	6602		
WHITE	478	381	147	460	349	165	230	422	427	3059	495	392	367	178	372	319	157	404	586	3270	6329		
GREEN	443	360	143	441	317	140	201	422	394	2861	458	361	328	148	307	319	142	364	557	2984	5845		
MEN'S HCP	11	7	13	1	9	15	17	3	5		12	6	16	8	2	18	14	10	4				
TIM 8	5/2	4/3	3/2	6/2	5/1	4/1	5/1	4/3	5/2	17	5/2	5/2	4/2	4/2	4/3	5/1	3/2	4/2	7/1	17	34		
JOHN 13	6/2	-10	4/2	7/1	5/2	4/1	5/1	6/1	5/2	12	5/3	5/2	6/0	3/3	5/2	4/2	4/1	7/0	6/2	15	27		
PVC	0	+1	+1	+2	+1	+1	+1	+2	+2		+1	+1	+2	+1	+2	+2	3/2						
PAR	5	4	3	5	4	3	4	4	4	36	5	4	4	3	4	4	3	4	5	36	72		
TIM 10	-10	6/1	3/2	7/1	6/1	4/1	5/1	6/1	4/3	11	6/1	5/2	5/1	3/3	5/2	4/2	4/1	5/2	6/2	16	27		
	+1	+2	+2	+3	+3	+3	+3	+4	+3														
											+4	+4	+5	+4	+5								
LADIES' HCP	5	9	15	1	11	13	17	3	7		4	6	10	16	14	12	18	8	2				04/15
RED	401	319	108	421	236	128	173	399	362	2547	413	319	314	120	255	282	110	337	518	2668	5215		

Course Rating and Slope

MENS

Black	77.4/149	White	72.3/133
Gold	75.5/145	Green	70.0/130
Blue	73.8/140		

LADIES

White	78.8/149
Green	76.2/143
Red	72.6/131

MARKER _____ DATE _____

PLAYER _____

PLEASE ENJOY GORDON AND MACPHAIL WHISKIES RESPONSIBLY
for the facts drinkaware.co.uk



DRIVEN BY QUALITY.

SINCE 1895 WE'VE CREATED COMPLEX, BALANCED AND SUBTLE SINGLE MALTS. ONLY WHEN THEY ARE READY WILL THEY THEN CARRY THE GORDON AND MACPHAIL NAME. WE INVITE YOU TO DISCOVER THE EXTENSIVE SELECTION AVAILABLE IN THE CLUB HOUSE.



THE WORLD'S LEADING MALT WHISKY SPECIALIST
ELGIN, SCOTLAND SINCE 1895
WWW.GORDONANDMACPHAIL.COM

Moray Golf Club, Stottfield Road, Lossiemouth V31 6QS
Tel: 01343 812018

1. **BOUNDARIES**
 - a) The lines of garden fences and walls at the 2nd and 18th holes and the fence on the right of the 18th hole.
 - b) The kerb and walls marked with a white line near the clubhouse. The North end of this line is projected to meet the beach road.
 - c) All public roads and the areas beyond them.
 - d) All fences on the left of the 5th and 7th.
2. **GROUND UNDER REPAIR**

The following areas are ground under repair from which play is prohibited: Areas encircled with blue lines/blue posts.

 - a) All fences running alongside Public Roads (with the exception of 1d) and any fence around trees.
 - b) All artificially surfaced tracks and paths and rubber matting including the artificial kerbs forming the edges of paths.
 - c) Steps into bunkers.
 - d) All landing lights.
 - e) All shelters/nuts.
4. **STONES IN BUNKERS**

Are movable obstructions.
5. **LANDING LIGHTS ON THE 13TH AND 14TH HOLES**

For interference with stance or swing, Rule 24-2b(i) applies. Otherwise, if the lights intervene directly between the player's ball and the hole, or the ball lies within one club-length of a spot where intervention would exist, relief is available as follows:
Determine the nearest spot not nearer to the hole that would give a club-length gap from the edge of the Temporary Immovable Obstruction.
6. **PROTECTION OF YOUNG TREES**

Relief must be taken from staked trees.
7. **LATERAL WATER HAZARDS**
 - a) Catch water ditches marked with a red post.
 - b) Unmarked ditches (the boundary of the hazard is the top of the ditch banks).
8. **FIXED SPRINKLER HEADS**

Relief obtained under Rule 24-2. Additional relief may also be available in accordance with Appendix I Part A4a.
9. **AERATION HOLES**

Relief obtained under Appendix 1A (3d) Specimen Local Rule 4d.

Moray Golf Club Local Rules - Old Course



Old Course





- ① New Course
- ① Old Course

01883 346244

COMPETITION						Please indicate which tee used. <input checked="" type="checkbox"/>		
DATE				TIME		Handicap	Strokes Rec'd	PAR 71
Player A				Player B				SSS 73
								PAR 71
								SSS 73
								PAR 70
								SSS 71
								PAR 75
								SSS 76

Hole	Marker's Score	Name	Blue Yards	White Yards	Blue White Par	Yellow Yards	Par	Stroke Index	Player's Score		W = - L = - H = 0 Points	Ladies Yards	Par	Stroke Index
									A	B				
+1	6/0	Mt. Lebanon	323	316	4	305	4	16	5/1	4/2	-1	295	4	16
-1	5/3	Cup	486	481	5	462	4	3	6/2	5/3	-2	452	5	6
□	5/2	Table	397	397	4	391	4	8	4/3	4/3	-2	384	4	3
-1	3/2	Coulart	193	193	3	186	3	13	5/0	4/2	-2	179	3	13
-2	4/3	Kinneddar	418	413	4	397	4	6	5/2	6/1	-2	386	4	1
-2	3/2	Gordonstoun	162	146	3	133	3	17	3/2	3/2	-2	136	3	17
-2	5/2	Ring	452	435	4	423	4	9	4/2	5/2	-2	416	5	9
-3	4/3	Heather	474	456	4	435	4	1	5/2	-10	-1	429	5	8
-2	5/1	Ditch	310	310	4	278	4	15	4/2	4/2	-7	294	4	15
	18	OUT	3215	3147	35	3010	34		16	17		2971	37	

PLEASE AVOID SLOW PLAY AT ALL TIMES

-2	10	7/0	Tom Morris	318	313	4	252	4	14	6/0	5/1	-2	245	4	14
-3	11	4/3	Lighthouse	429	423	4	405	4	2	5/2	6/1	-1	412	5	5
-4	12	4/3	Beacon	419	389	4	372	4	10	4/2	6/1	□	358	4	2
-5	13	4/3	St. Gerardines	423	418	4	387	4	4	5/2	4/3	-1	378	4	10
-4	14	5/2	Sea	453	427	4	399	4	7	4/3	4/3	-1	408	5	7
4/3	15	3/2	Short	180	180	3	173	3	18	3/2	5/1	□	143	3	18
	16	4/2	Road	358	358	4	347	4	12	5/1	4/3	-1	338	4	12
	17	6/2	Long	509	509	5	490	5	5	5/3	6/2	□	452	5	4
	18	4/3	Home	413	408	4	393	4	11	4/2	6/1	+1	373	4	11
	20		IN	3502	3425	36	3218	36		17	16		3107	38	
	18		OUT	3215	3147	35	3010	34		16	17		2971	37	
	38		TOTAL	6717	6572	71	6228	70		33	33		6078	75	

STABLEFORD POINTS OR PAR RESULT

HANDICAP
NETT

Holes won
Holes lost
Result

Marker's Signature Player's Signature

Castle Stuart Golf



RULES AND ETIQUETTE

1. Out of Bounds is beyond white posts, fences or walls bounding the course.
2. All water hazards at Castle Stuart are lateral hazards, defined by red stakes.
3. All roads and paths are immovable obstructions and free drop rules apply 2-4-2b.
4. PLEASE replace divots, repair ball marks, rake bunkers and smooth sand with shoes in open sandy areas.
5. Castle Stuart honours tradition by operating as a walking facility. All matches should keep pace with the match in front and cooperate with rangers when requested to do so. Golfers not keeping pace on the course will be asked to 'stand aside' to allow faster groups through.

Suggested Tees

- Black by permission from golf shop only
White 9 or lower handicap (men)
Green 10 or higher handicap (men)
Blue* 9 or lower handicap (ladies)
Red 10 or higher handicap (ladies)

* Position of tee either on green or red tee markers.

Stuart McColm - General Manager
Chris Haspell - Course Manager

Castle Stuart Golf Links, Inverness IV2 7JL Tel: +44 (0)1463 796111

www.castlestuartgolf.com
email: bookings@castlestuartgolf.com

Course Design by Mark Parsinen & Gill Hanse

TODAY'S
HOLE
LOCATION

The course has been designed with provision for championship tees that can play to more than 7400 yards in total.

HOLE	BLACK	WHITE	GREEN	BLUE	RED	S.I.	PAR	↓						
								TR	JF	PVC	JK	PVC		
1	434	360	330	330	299	9	4	5/1	4/3	-1	5/2	□		
2	550	530	486	486	400	5	5	6/2	6/2	-1	6/2	-1		
3	305	290	266	266	236	13	4	4/2	6/1	□	5/1	-1		
4	191	176	161	161	151	17	3	4/1	3/2	-1	3/2	-2		
5	447	430	401	332	332	7	4	4/3	4/3	-1	6/1	-1		
6	560	522	505	411	411	3	5	6/2	6/2	-1	7/1	□		
7	461	451	429	359	359	1 ^x	4	5/2	4/3	-2	5/2	-1		
8	218	208	192	192	166	15	3	4/1	3/2	-3	3/2	-1		
9	364	350	330	330	226	11	4	4/2	5/2	-3	6/1	□		
OUT	3530	3317	3100	2867	2580		36	16	20		14			
10	405	360	341	341	315	14	4	5/1	4/2	-4	4/2	-1		
11	144	130	115	115	91	16	3	4/1	3/2	-5	3/2	-2		
12	528	518	504	504	414	2 ^x	5	5/3	6/2	-4	6/2	-3		
13	441	416	363	303	303	4	4	5/2	5/2	-4	3/4	-4		
14	386	360	347	347	318	10	4	6/1	5/1	-4	4/3	-4		
15	421	409	388	314	314	8	4	5/2	5/2	-4	5/2	-3		
16	335	325	310	310	260	18	4	4/2	6/1	-3	4/2	-2		
17	224	210	195	133	133	6	3	4/2	3/3	4/2	5/1	3/2		
18	595	508	490	490	420	12	5	5/3	7/1		6/2			
IN	3479	3236	3053	2857	2568		36	17	16		20			
OUT	3530	3317	3100	2867	2580		36	16	20		14			
TOT	7009	6553	6153	5724	5148		72	33	36		34			

10-18
 19-22
 23-26
 27-30
 31-34
 35-38
 39-42
 43-46
 47-50
 51-54
 55-58
 59-62
 63-66
 67-70
 71-74
 75-78
 79-82
 83-86
 87-90
 91-94
 95-98
 99-102
 103-106
 107-110
 111-114
 115-118
 119-122
 123-126
 127-130
 131-134
 135-138
 139-142
 143-146
 147-150
 151-154
 155-158
 159-162
 163-166
 167-170
 171-174
 175-178
 179-182
 183-186
 187-190
 191-194
 195-198
 199-202
 203-206
 207-210
 211-214
 215-218
 219-222
 223-226
 227-230
 231-234
 235-238
 239-242
 243-246
 247-250
 251-254
 255-258
 259-262
 263-266
 267-270
 271-274
 275-278
 279-282
 283-286
 287-290
 291-294
 295-298
 299-302
 303-306
 307-310
 311-314
 315-318
 319-322
 323-326
 327-330
 331-334
 335-338
 339-342
 343-346
 347-350
 351-354
 355-358
 359-362
 363-366
 367-370
 371-374
 375-378
 379-382
 383-386
 387-390
 391-394
 395-398
 399-402
 403-406
 407-410
 411-414
 415-418
 419-422
 423-426
 427-430
 431-434
 435-438
 439-442
 443-446
 447-450
 451-454
 455-458
 459-462
 463-466
 467-470
 471-474
 475-478
 479-482
 483-486
 487-490
 491-494
 495-498
 499-502
 503-506
 507-510
 511-514
 515-518
 519-522
 523-526
 527-530
 531-534
 535-538
 539-542
 543-546
 547-550
 551-554
 555-558
 559-562
 563-566
 567-570
 571-574
 575-578
 579-582
 583-586
 587-590
 591-594
 595-598
 599-602
 603-606
 607-610
 611-614
 615-618
 619-622
 623-626
 627-630
 631-634
 635-638
 639-642
 643-646
 647-650
 651-654
 655-658
 659-662
 663-666
 667-670
 671-674
 675-678
 679-682
 683-686
 687-690
 691-694
 695-698
 699-702
 703-706
 707-710
 711-714
 715-718
 719-722
 723-726
 727-730
 731-734
 735-738
 739-742
 743-746
 747-750
 751-754
 755-758
 759-762
 763-766
 767-770
 771-774
 775-778
 779-782
 783-786
 787-790
 791-794
 795-798
 799-802
 803-806
 807-810
 811-814
 815-818
 819-822
 823-826
 827-830
 831-834
 835-838
 839-842
 843-846
 847-850
 851-854
 855-858
 859-862
 863-866
 867-870
 871-874
 875-878
 879-882
 883-886
 887-890
 891-894
 895-898
 899-902
 903-906
 907-910
 911-914
 915-918
 919-922
 923-926
 927-930
 931-934
 935-938
 939-942
 943-946
 947-950
 951-954
 955-958
 959-962
 963-966
 967-970
 971-974
 975-978
 979-982
 983-986
 987-990
 991-994
 995-998
 999-1002

TR JF PVC JK PVC

DATE:

MARKER:

PLAYER:

THE NEW FIAT 500X



Donald Mackenzie

62 Seafield Road | Inverness | 01463 235777

www.donaldmackenzie.co.uk

175 Yards to the Centre of the Green



125 Yards to the Centre of the Green



FAIRWAY MARKER DISCS:

PENALTY FOR BREACH OF LOCAL RULE:
Match Play - Loss of Hole; Stroke Play - Two Strokes.

9. DROPPING ZONES. Dropping zones are marked by a continuous white line and specifying notice. A dropping zone may be used for relief from an unplayable ball at the hole where it is positioned. The use of a dropping zone is discretionary not compulsory. Relief is taken by a drop striking the course first WITHIN THE CONTINUOUS WHITE LINE, and the ball rolling not more than two club-lengths from that striking point not nearer the hole, EVEN IF IT COMES TO REST OUTSIDE THE DROPPING ZONE.

- a) The roads, all paths and their sides.
- b) Steps to bunkers.
- c) The inner fences behind the 15th hole and to the left on the 18th hole.

8. INTEGRAL PARTS OF THE COURSE.

must be lifted and dropped at the nearest point to where the ball lay that (a) is not nearer the hole, (b) avoids intervention and (c) is not in a hazard or on a putting green. The ball may be cleaned when lifted.

7. **IMMOVABLE OBSTRUCTIONS CLOSE TO THE PUTTING GREEN.** Relief from interference by an immovable obstruction may be obtained under RULE 24-2. In addition, if a ball lies off the putting green but not in a hazard and an immovable obstruction on or within two club-lengths of the putting green and within the club-lengths of the ball intervenes in the line of play between the ball and the hole, the player may take relief as follows. The ball which are not movable as defined above.
 6. **IMMOVABLE OBSTRUCTIONS.** These are artificial objects STONES on the course, but if moved these should be replaced. BUNKERS are movable obstructions, as are the WHITE PAINTED STONES IN may be moved without causing damage. STONES IN MOVABLE OBSTRUCTIONS. An obstruction is movable if it the Council to be an integral part of the course.
 4. **OBSTRUCTIONS.** An obstruction is anything artificial, EXCEPT objects defining out of bounds, any part of an immovable artificial object which is out of bounds, and any construction declared by the Council to be an integral part of the course.
 3. **GROUND UNDER REPAIR.** Ground under repair is marked by CLOSED WHITE LINES and/or SPECIFYING NOTICE. Play is prohibited from ground under repair.
 2. **LATERAL WATER HAZARDS.** All areas to the seaward of denoting RED STAKES.
 1. **OUT OF BOUNDS.** Beyond any wall or fence bordering the course.
 - a) Beyond any CONTINUOUS WHITE LINE and line of WHITE STAKES OR WHITE POSTS on the course.
 - b) Entrance drive to house on the right of the 4th hole beyond line COURSE SIDE.

LOCAL RULES



Fortrose & Rosemarkie Golf Club

Ness Road East Fortrose Ross-Shire IV10 8SE Tel. 01381 620529/620733

www.fortrosegolfclub.co.uk

Fortrose & Rosemarkie Golf Club

Competition			
Date		Time	
Player A		Strokes rec.	H/cap
Player B		Strokes rec.	H/cap
Player C		Strokes rec.	H/cap
Player D		Strokes rec.	H/cap

GIVE FULL CONSIDERATION TO MEMBERS OF THE PUBLIC USING THE ROAD TO THE LIGHTHOUSE AND THE FOOTPATH ROUND THE COURSE

Marker's Signature
Player's Signature

Please indicate which tee used ✓			
Black	White	Yellow	Red
SSS			
70	69	68	72
SLOPE			
122	122	119	123

Hole	Marker's Score	Name	Black White Tees Yards	Par	Yellow Tee Yards	Stroke Index	Score				W: + L: - H: 0	Red Tee Yards	Par	Stroke Index
							A	B	C	D				
1		FORT GEORGE	329	4	320	11	5/2		4/2		□	309	4	11
2		THE DYKE	442 414	4	401	3	5/2		6/1		-1	390	4	3
3		THE CUP	342 313	4	298	15	6/0		4/2		□	283	4	9
4		LIGHTHOUSE	497 465	5 4	456	1	7/1		5/3		+1	448	5	1
5		ICEHOUSE	133	3	122	17	4/1		4/1		+1	107	3	15
6		ROSEHAUGH	469	5 4	416	7	6/2		6/2		+1	411	5	7
7		ORMOND HILL	331 323	4	270	13	5/2		5/1		□	241	4	17
8		CHANONRY	404 383	4	376	5	5/2		4/3		+1	364	4	5
9		THE NESS	204	3	191	9	5/1		4/1		+1	181	3	13
OUT			3151 3033	36 34	2850		13		16			2734	36	

LEAVE RAKES IN BUNKERS. REPAIR PITCHMARKS

10		FEU ROAD	319	4	313	12	4/3		4/2		□	309	4	6
11		DALCROSS	415 378	4	347	6	6/1		6/1		□	326	4	12
12		CULLODEN	431 394	4	380	2	5/2		5/2		□	365	4	2
13		QUIGISH	309	4	300	8	6/1		6/1		□	249	4	8
14		BONFIRE HILL	265	4	249	18	4/2		4/2		□	237	4	18
15		TARGET	292	4	285	16	5/1		4/2		+1	277	4	14
16		COIGNACH ODHEUR	335	4	329	14	4/2		5/1		□	322	4	16
17		CLAY POTS	357	4	347	4	6/1		5/2		+1	333	4	4
18		FIERY HILLOCK	211	3	194	10	4/1		3/3		2/1	190	3	10
IN			2934 2860	35	2744		14		16			2608	35	
OUT			3151 3033	36 34	2850		13		16			2734	36	
TOTAL			6085 5893	71 69	5594		27		32			5342	71	

HANDICAP
NETT SCORE

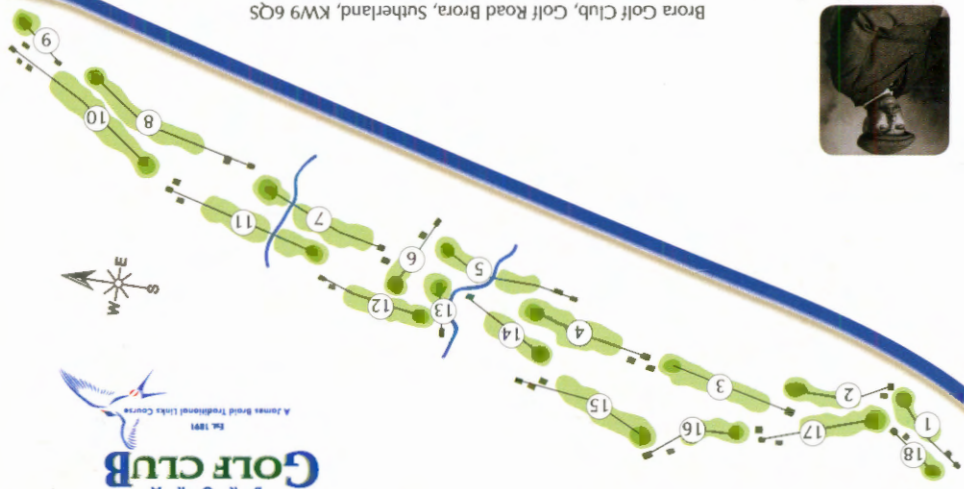


PLEASE AVOID SLOW PLAY

James Braid
Course Architect



Brora Golf Club, Golf Road Brora, Sutherland, KW9 6QS
TEL: 01408 621417 • FAX: 01408 622157
secretary@broragolf.co.uk • www.broraclub.co.uk



Situated only a 150 yards from Brora Golf Club

Email: info@royalmarinebrora.com • www.royalmarinebrora.com

Tel : 01408 621252 • Fax : 01408 621181

Check out our website for golfing and leisure breaks

- Spa Facilities
- Restaurant
- Hotel

ROYAL MARINE HOTEL
Restaurant & Spa
Golf Road, Brora

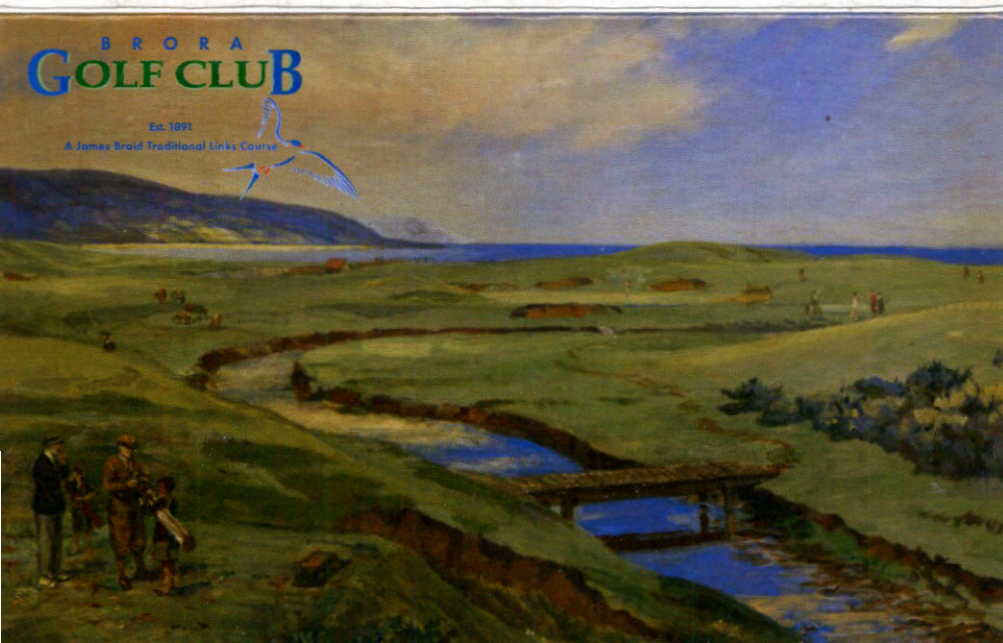
ROYAL MARINE HOTEL



BRORA
GOLF CLUB

Est. 1891

A James Braid Traditional Links Course



ELECTRIC FENCES ARE IMMOVABLE OBSTRUCTIONS

www.townhillgolf.com part of Cleve Golf © Ref: 42563

COMPETITION							Game No:		PLEASE INDICATE WHICH TEE USED			
DATE				TIME			H'CAP	Strokes Rec'd	PAR 70	70	<input type="checkbox"/>	
PLAYER A												
PLAYER B												
MARKER SCORE	HOLE	NAME	WHITE YARDS	YELLOW YARDS	PAR	STROKE INDEX	PLAYERS		NETT OR POINTS	LADIES YARDS	PAR	STROKE INDEX
							A	B				
+1	1	Ardassie	297	280	4	13	4/2	5/1		276	4	13
+1	2	Bents	344	334	4	9	5/1	6/1		323	4	9
-1	3	Canal	447	447	4	1	5/2	5/2		413	5	7
+2	4	White Post	325	313	4	15	3/3	4/2		277	4	15
+2	5	Burn	428	418	4	3	6/1	6/1		378	4	1
+2	6	Witch	190	164	3	7	3/3	3/3		153	3	11
+1	7	2nd Burn	350	340	4	11	5/1	4/3		333	4	3
+2	8	Long	501	501	5	5	6/2	7/1		430	5	5
+3	9	Sea Hole	162	149	3	17	2/3	-0		141	3	17
		OUT	3044	2946	35		18	14		2724	36	

PLEASE DO NOT MOVE ELECTRIC FENCES

+4	10	Greenhill	435	425	4	6	4/3	6/1		395	4	2
+3	11	Achrimsdale Burn	497	491	5	8	6/1	5/3		383	5	10
+2	12	Dalchalm	362	314	4	10	4/2	4/3		273	4	6
+2	13	Snake	125	108	3	18	3/2	3/2		108	3	18
+2	14	Trap	334	305	4	16	5/1	5/1		282	4	12
+2	15	Sahara	430	399	4	2	5/2	5/2		324	4	8
+1	16	Plateau	345	335	4	12	5/1	4/2		256	4	14
□	17	Tarbatness	438	438	4	4	6/1	4/3		386	4	4
1UP	18	Home Hole	201	190	3	14	3/2	-0		142	3	16
		IN	3167	3005	35		15	17		2549	35	
		OUT	3044	2946	35		33	31		2724	36	
		TOTAL	6211	5951	70					5273	71	

STABLEFORD POINTS OR PAR RESULT

HANDICAP

NETT

Holes Won

Holes Lost

Result

Marker's Signature

Player's Signature

PLEASE DO NOT STAND ON ELECTRIC FENCES

1. OUT OF BOUNDS

A ball over any boundary fence or wall is out of bounds, this includes the club house enclosure and the greenkeepers compound to the left of the 16th hole.

2. LATERAL WATER HAZARD

The beach is a lateral water hazard

3. PROTECTIVE FENCES AROUND GREENS

- A protective fence around a green is an IMMOVABLE OBSTRUCTION and relief from interference may be obtained under rule 24-2.
- If a ball strikes any part of a protective fence around the green of the hole being played, the player MAY disregard that stroke, abandon the ball and play another ball as nearly as possible at the spot from which the original ball was played in accordance with rule 20-5 (playing next stroke from where previous ball played.)

4. FIXED SPRINKLER HEADS

All fixed sprinkler heads are immovable obstructions and relief from interference may be obtained under rule 24-2. In addition, if a ball lies off the putting green but not in a hazard and an immovable obstruction on or within two club lengths of the putting green and within two club lengths of a ball intervenes on the line of play between

the ball and the hole, the player may take relief as follows.

- The ball must be lifted and dropped at the nearest point to where the ball lay at that (a) is not nearer the hole.
- (b) avoids intervention and (c) is not in a hazard or on a putting green. The ball may be cleaned when lifted.

5. ANIMAL DROPPINGS

Animal droppings through the green or on the putting green may be treated as casual water.

6. TRACKS AND PATHS

Where tracks and paths are artificially surfaced they are immovable obstructions and relief from interference may be obtained under Rule 24-2.

7. GROUND UNDER REPAIR

- The tractor tracks leading from the gate at the right of the 16th fairway.
- (b) Animal hoof marks through the green and within bunkers.

Breach of Local Rules:

Match play - loss of hole

Stroke play - Two strokes

Struie Course Local Rules

The Rules of the Royal and Ancient Golf Club of St Andrews will apply except so far as they are modified by the following local rules.

- 1. Out of bounds - (Rule 27-1)**
Out of bounds is defined by:
 - (a) Beyond any white stakes, white lines or walls/fences bounding the course.
 - (b) Beyond the white stakes surrounding the Clubhouse, Professional's shop and Car Park.
- 2. Roads & paths on the course - (Rule 24-2b)**
All artificially surfaced roads and paths on the course (excluding those made using soft black rubber) shall be treated as immovable obstructions. Relief may be taken without penalty under Rule 24-2b.
- 3. Water hazards (Rule 26)**
 - (a) Water hazards are marked with Yellow stakes or lines.
 - (b) Lateral water hazards are marked with Red stakes or lines.
- 4. Stones in bunkers (Rule 24-1)**
Stones in bunkers are movable obstructions.
- 5. Bunker faces (Rule 25-2)**
The face of a bunker which consists of stacked turf is neither a part of a bunker nor a closely mown area.

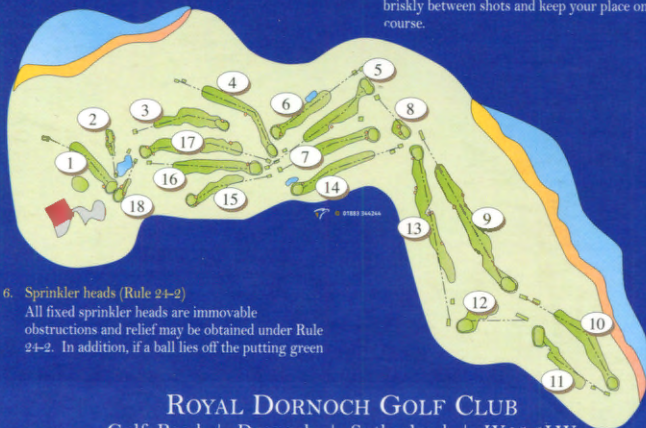
- 6. Sprinkler heads (Rule 24-2)**
All fixed sprinkler heads are immovable obstructions and relief may be obtained under Rule 24-2. In addition, if a ball lies off the putting green

but not in a hazard and an immovable obstruction on or within two club-lengths of the putting green and within two club-lengths of the ball intervenes on the line of play between the ball and the hole the player may take relief as follows: The ball must be lifted and dropped at the nearest point to where the ball lay that is (a) not nearer the hole, (b) avoids the intervention and (c) is not in a hazard or on a putting green. The ball may be cleaned when lifted.

- 7. Ground under repair (Rule 25-1)** Play prohibited
A ball lying within an area marked by closed white lines is in ground under repair from which play is prohibited.
- 8. Long term hazards - blind holes, slopes, banks and deep water.**
- 9. Bridges - ball on bridge above hazard**
The ball is in the water hazard because the margins of a water hazard are deemed to extend vertically upwards. The bridge is an immovable obstruction, but there is no relief without penalty from an immovable obstruction when the ball lies within or touches a water hazard. If the ball is played from the bridge the club may be grounded Rule 13-4.

Etiquette

All players must replace divots, rake bunkers - please leave rakes in the middle of bunkers - and repair pitch marks on greens. Please do not take trolleys or buggies onto greens. Please walk briskly between shots and keep your place on the course.



ROYAL DORNOCH



STRUIE COURSE

ROYAL DORNOCH GOLF CLUB
Golf Road | Dornoch | Sutherland | IV25 3LW
Club tel: 01862 810219 | Professional tel: 01862 811924

Email: bookings@royaldornoch.com | www.royaldornoch.com

01883 344244

COMPETITION

DATE						TIME				Handicap	Strokes Rec'd	Please circle which tee used.		Slope Rating
											PAR 71	70	125	
											PAR 71	69	120	
A											PAR 69	65	109	
B											PAR 72	72	120	

Hole	Marker's Score	Name	White Yards	Yellow Yards	Blue Yards	Par	Stroke Index	Player's Score		Nett Score	W L H Points	Red Yards	Par	Stroke Index
								A	B					
1		MORANGIE	318	315	303	4	12	4/2	5/1	4	+1	305	4	10
2		CADDIES WELL	122	109	71	3	18	4/1	4/1	4	+1	100	3	18
3		ROAD HOLE	343	339	329	4	8	5/1	4/2	5	0	335	4	4
4		STRUIE	399	392	315	4	14	4/2	4/2	4	0	317	4	16
5		GIZZEN BRIGGS	406	395	346	4	2	5/2	5/2	5	0	348	4	2
6		PLANTATIONS	354	339	295	4	4	4/3	4/3	4	0	300	4	8
7		GLEBE	351	336	289	4	10	3/3	6/1	3	+1	291	4	14
8		THE BRIDGE	175	172	159	3	6	4/2	3/3	4	0	163	3	12
9		DORNOCH FIRTH	553	524	454	5	16	5/2	7/0	5	+1	477	5	6
OUT			3021	2921	2561	35		18	15	38		2636	35	

PLEASE AVOID SLOW PLAY AT ALL TIMES

10		GEOL NA MARA	439	421	339	4	3	5/2	6/1	5	+2	384	4	13
11		LONEMORE	348	292	268	4	11	5/1	4/2	5	+1	292	4	9
12		CATHEDRAL	215	207	147	3	7	4/1	5/1	4	+1	174	3	17
13		TARBAT NESS	527	499	432	5/4	5	5/3	7/1	5	+2	463	5	3
14		BLACK BURN	429	418	384	4	1	5/2	6/1	5	+3	386	5	1
15		THE DYKE	309	301	265	4	13	4/2	4/2	4	+3	281	4	11
16		LITTLETOWN	372	365	313	4	9	5/1	5/2	5	+2	317	4	5
17		NILE	478	469	400	5/4	17	5/2	6/1	5	3/1	404	5	7
18		WITCHES POOL	127	109	121	3	15	2/3	3/2	2		105	3	15
IN			3244	3081	2669	36/34		17	12	40		2806	37	
OUT			3021	2921	2561	35		35	27	78		2636	35	
TOTAL			6265	6002	5230	71/69						5442	72	

<div style="border: 1px solid black; width: 100px; height: 50px; display: flex; align-items: center; justify-content: center;"> <p>STABLEFORD POINTS OR PAR RESULT</p> </div>	HANDICAP			
	NETT			

Marker's Signature Player's Signature

Championship Course Local Rules

The Rules of the Royal and Ancient Golf Club of St Andrews will apply except so far as they are modified by the following local rules.

1. Out of bounds - (Rule 27-1)
Out of bounds is defined by: (a) Beyond any white stakes, white lines or walls/fences bounding the course. (b) Beyond the white stakes surrounding the Clubhouse, Professional's shop and Car Park.
2. Roads & paths on the course - (Rule 24-2b)
All artificially surfaced roads and paths on the course (excluding those made using soft black rubber) shall be treated as immovable obstructions. Relief may be taken without penalty under Rule 24-2b.
3. Water hazards (Rule 26)

- (a) Water hazards are marked with Yellow stakes or lines.
- (b) Lateral water hazards are marked with Red stakes or lines.

4. Stones in bunkers (Rule 24-1)
Stones in bunkers are movable obstructions.

5. Bunker faces (Rule 25-2)
The face of a bunker which consists of stacked turf is neither a part of a bunker nor a closely mown area.

6. Sprinkler heads (Rule 24-2)
All fixed sprinkler heads are immovable obstructions and relief may be obtained under Rule 24-2. In addition, if a ball lies off the putting green but not in a hazard and an immovable obstruction on or within two club-lengths of the putting green and within two club-lengths of the ball intervenes on the line of play between the ball and the hole the player may take relief as follows: The ball must be lifted and dropped at the nearest point to where the ball lay that is (a) not nearer the hole, (b) avoids the intervention and (c) is not in a hazard or on a putting green. The ball may be cleaned when lifted.

7. Ground under repair (Rule 25-1) Play prohibited
A ball lying within an area marked by closed white lines is in ground under repair from which play is prohibited.



All golfers should be aware of the following hazards – blind holes, slopes, banks and deep water.

Etiquette

All players must replace divots, rake bunkers - please leave rakes in the middle of bunkers - and repair pitch marks on greens.

Please do not take trolleys or buggies onto greens.

Please walk briskly between shots and keep your place on the course.

400
YEARS OF GOLF



IN
DORNOCH

CHAMPIONSHIP
COURSE

ROYAL DORNOCH GOLF CLUB

Golf Road | Dornoch | Sutherland | IV25 3LW

Club tel: 01862 810219 | Professional tel: 01862 811924

Email: bookings@royaldornoch.com | www.royaldornoch.com

01883 344244

COMPETITION											Please indicate which tee used.		Slope Rating		
DATE	START TIME	FINISH TIME						Handicap	Strokes Rec'd	PAR	SSS	70	74	136	
Player A											PAR	SSS	70	73	134
Player B											PAR	SSS	70	71	129
											PAR	SSS	76/75	76/69	139/126
Hole	Marker's Score	Name	Pace of Play	Blue Yards	White Yards	Yellow Yards	Par	Stroke Index	Player's Score		Nett Score	W I L P O P O I N T S	Red Yards	Par	Stroke Index
1	-1	FIRST	0:12	331	331	302	4	13	3/4	4/3	5/1	4/2	266	4	15
2	-1	ORD	0:22	184	177	167	3	5	4/2	-10	4/2	4/2	160	3	3
3	-2	EARL'S CROSS	0:36	413	413	398	4	11	5/2	6/1	-10	5/1	389	4	5
4	-1	ACHINCHANTER	0:51	422	422	402	4	3	5/2	6/1	5/2	4/3	392	5	11
5	-2	HILTON	1:05	353	353	312	4	15	3/3	4/2	6/0	5/1	306	4	1
6	-3	WHINNY BRAE	1:15	161	161	156	3	9	3/3	3/3	5/1	4/1	137	3	9
7	-4	PIER	1:31	479	479	464	4	1	5/2	6/1		6/1	408	5	17
8	-4	DUNROBIN	1:45	434	434	389	4	7	5/2	4/3		5/2	375	4	7
9	-3	CRAIGLIATH	2:02	529	529	491	5	17	-10	7/0		5/2	435	5/4	13
OUT				3306	3299	3081	35		20	14		15	2868	37/36	

PLEASE AVOID SLOW PLAY AT ALL TIMES

10	-2	FUARAN	2:12	174	146	142	3	14	4/1	4/1		3/2	132	3	6
11	-1	A'CHLACH	2:25	449	446	434	4	4	6/1	5/2		5/2	426	5	16
12	□	SUTHERLAND	2:42	535	535	490	5	16	6/1	6/1		5/2	472	5	2
13	-1	BENTS	2:52	180	171	148	3	12	5/1	4/2		5/0	137	3	12
14	-1	FOXY	3:07	445	445	439	4	2	6/1	6/1		6/1	401	5	8
15	-1	STULAIG	3:20	360	322	300	4	18	4/2	6/0		4/2	290	4	10
16	-1	HIGH HOLE	3:34	401	401	395	4	8	6/1	6/1		6/1	387	5	18
17	2/1	VALLEY	3:49	416	405	390	4	10	5/2	5/2		5/1	384	4	4
18		GLENMORANGIE	4:05	456	456	446	4	6	5/2	6/1		5/2	437	5	14
IN				3416	3327	3184	35		12	11		13	3066	39	
OUT				3306	3299	3081	35		20	14		15	2868	37/36	
TOTAL				6722	6626	6265	70		32	25		28	5934	76/75	

STABLEFORD POINTS OR PAR RESULT	TIMINGS BASED ON	HANDICAP		
	4 BALL PLAY	NETT		
			JF JS TL	

Marker's Signature Player's Signature

Championship Course Local Rules

The Rules of the Royal and Ancient Golf Club of St Andrews will apply except so far as they are modified by the following local rules.

1. Out of bounds - (Rule 27-1)

Out of bounds is defined by: (a) Beyond any white stakes, white lines or walls/fences bounding the course. (b) Beyond the white stakes surrounding the Clubhouse, Professional's shop and Car Park.

2. Roads & paths on the course - (Rule 24-2b)

All artificially surfaced roads and paths on the course (excluding those made using soft black rubber) shall be treated as immovable obstructions. Relief may be taken without penalty under Rule 24-2b.

3. Water hazards (Rule 26)

- (a) Water hazards are marked with Yellow stakes or lines.
- (b) Lateral water hazards are marked with Red stakes or lines.

4. Stones in bunkers (Rule 24-1)

Stones in bunkers are movable obstructions.

5. Bunker faces (Rule 25-2)

The face of a bunker which consists of stacked turf is neither a part of a bunker nor a closely mown area.

6. Sprinkler heads (Rule 24-2)

All fixed sprinkler heads are immovable obstructions and relief may be obtained under Rule 24-2. In addition, if a ball lies off the putting green but not in a hazard and an immovable obstruction on or within two club-lengths of the putting green and within two club-lengths of the ball intervenes on the line of play between the ball and the hole the player may take relief as follows: The ball must be lifted and dropped at the nearest point to where the ball lay that is (a) not nearer the hole, (b) avoids the intervention and (c) is not in a hazard or on a putting green. The ball may be cleaned when lifted.

7. Ground under repair (Rule 25-1) Play prohibited

A ball lying within an area marked by closed white lines is in ground under repair from which play is prohibited.



All golfers should be aware of the following hazards – blind holes, slopes, banks and deep water.

Etiquette

All players must replace divots, rake bunkers - please leave rakes in the middle of bunkers - and repair pitch marks on greens.

Please do not take trolleys or buggies onto greens.

Please walk briskly between shots and keep your place on the course.

400
YEARS OF GOLF



IN
DORNOCH

CHAMPIONSHIP
COURSE

ROYAL DORNOCH GOLF CLUB

Golf Road | Dornoch | Sutherland | IV25 3LW

Club tel: 01862 810219 | Professional tel: 01862 811924

Email: bookings@royaldornoch.com | www.royaldornoch.com

01883 344244

COMPETITION

COMPOSITION ROUND

Please indicate which tee used. Slope Rating

DATE START TIME *FRIDAY* FINISH TIME *AM*

Handicap Strokes Rec'd

PAR	70	136
SSS	74	
PAR	70	134
SSS	73	
PAR	70	129
SSS	71	
PAR	76/75	139/126
SSS	76/69	

Player A
Player B

Hole	Marker's Score	Name	Pace of Play	Blue Yards	White Yards	Yellow Yards	Par	Stroke Index	Player's Score		Nett Score	W = + L = - H = 0 Points	Red Yards	Par	Stroke Index
									A	B					
1	-1	FIRST	0:12	331	331	302	4	13	5/1	5/2			266	4	15
2	-1	ORD	0:22	184	177	167	3	5	5/1	5/1			160	3	3
3	0	EARL'S CROSS	0:36	413	413	398	4	11	5/2	6/1			389	4	5
4	0	ACHINCHANTER	0:51	422	422	402	4	3	5/2	5/2			392	5	11
5	+1	HILTON	1:05	353	353	312	4	15	4/2	5/1			306	4	1
6	+1	WHINNY BRAE	1:15	161	161	156	3	9	4/2	4/2			137	3	9
7	+1	PIER	1:31	479	479	464	4	1	5/2	5/2			408	5	17
8	+1	DUNROBIN	1:45	434	434	389	4	7	5/2	7/0			375	4	7
9	+2	CRAIGLIATH	2:02	529	529	491	5	17	6/1	7/0			435	5/4	13
OUT				3306	3299	3081	35		15	11			2868	37/36	

PLEASE AVOID SLOW PLAY AT ALL TIMES

10	+3	FUARAN	2:12	174	146	142	3	14	2/3	4/2			132	3	6
11	+4	A'CHLACH	2:25	449	446	434	4	4	4/3	5/2			426	5	16
12	+4	SUTHERLAND	2:42	535	535	490	5	16	5/2	5/2			472	5	2
13	+4	BENTS	2:52	180	171	148	3	12	3/2	4/2			137	3	12
14	+3	FOXY	3:07	445	445	439	4	2	5/2	4/3			401	5	8
15	4/3	STULAIG	3:20	360	322	300	4	18	4/2	6/0			290	4	10
16	4/3	HIGH HOLE	3:34	401	401	395	4	8	5/2	7/0			387	5	18
17		VALLEY	3:49	416	405	390	4	10	4/2	4/3			384	4	4
18		GLENMORANGIE	4:05	456	456	446	4	6	5/2	6/1			437	5	14
IN				3416	3327	3184	35		19	15			3066	39	
OUT				3306	3299	3081	35		16	11			2868	37/36	
TOTAL				6722	6626	6265	70		35	26			5934	76/75	

STABLEFORD POINTS OR PAR RESULT **TIMINGS BASED ON HANDICAP 4 BALL PLAY** NETT

Marker's Signature Player's Signature

Championship Course Local Rules

The Rules of the Royal and Ancient Golf Club of St Andrews will apply except so far as they are modified by the following local rules.

1. Out of bounds - (Rule 27-1)

Out of bounds is defined by: (a) Beyond any white stakes, white lines or walls/fences bounding the course. (b) Beyond the white stakes surrounding the Clubhouse, Professional's shop and Car Park.

2. Roads & paths on the course - (Rule 24-2b)

All artificially surfaced roads and paths on the course (excluding those made using soft black rubber) shall be treated as immovable obstructions. Relief may be taken without penalty under Rule 24-2b.

3. Water hazards (Rule 26)

- (a) Water hazards are marked with Yellow stakes or lines.
- (b) Lateral water hazards are marked with Red stakes or lines.

4. Stones in bunkers (Rule 24-1)

Stones in bunkers are movable obstructions.

5. Bunker faces (Rule 25-2)

The face of a bunker which consists of stacked turf is neither a part of a bunker nor a closely mown area.



- 6. Sprinkler heads (Rule 24-2)
All fixed sprinkler heads are immovable obstructions and relief may be obtained under Rule 24-2. In addition, if a ball lies off the putting green but not in a hazard and an immovable obstruction on or within two club-lengths of the putting green and within two club-lengths of the ball intervenes on the line of play between the ball and the hole the player may take relief as follows: The ball must be lifted and dropped at the nearest point to where the ball lay that is (a) not nearer the hole, (b) avoids the intervention and (c) is not in a hazard or on a putting green. The ball may be cleaned when lifted.
- 7. Ground under repair (Rule 25-1) Play prohibited
A ball lying within an area marked by closed white lines is in ground under repair from which play is prohibited.

All golfers should be aware of the following hazards – blind holes, slopes, banks and deep water.

Etiquette

All players must replace divots, rake bunkers – please leave rakes in the middle of bunkers – and repair pitch marks on greens.

Please do not take trolleys or buggies onto greens.

Please walk briskly between shots and keep your place on the course.

400
YEARS OF GOLF



IN
DORNOCH

CHAMPIONSHIP
COURSE

ROYAL DORNOCH GOLF CLUB

Golf Road | Dornoch | Sutherland | IV25 3LW

Club tel: 01862 810219 | Professional tel: 01862 811924

Email: bookings@royaldornoch.com | www.royaldornoch.com

01883 344244

COMPETITION

Please indicate which tee used. Slope Rating

DATE	START TIME	FINISH TIME	Handicap	Strokes Rec'd	PAR 70 SSS 74	Slope Rating 136
Player A	FRIDAY PM				PAR 70 SSS 73	134
Player B					PAR 70 SSS 71	129
					PAR 76/75 SSS 76/69	139/126

Hole	Marker's Score	Name	Pace of Play	Blue Yards	White Yards	Yellow Yards	Par	Stroke Index	Player's Score		Nett Score	W L H = 0 Points	Red Yards	Par	Stroke Index
									A	B					
1	6/1	FIRST	0:12	331	331	302	4	13	4/3	4/2	4	-1	266	4	15
2	5/1	ORD	0:22	184	177	167	3	5	4/2	4/2	4	-1	160	3	3
3	5/2	EARL'S CROSS	0:36	413	413	398	4	11	6/1	4/2	4	0	389	4	5
4	6/1	ACHINCHANTER	0:51	422	422	402	4	3	5/2	4/3	4	+1	392	5	11
5	5/1	HILTON	1:05	353	353	312	4	15	5/1	3/3	3	+2	306	4	1
6	3/3	WHINNY BRAE	1:15	161	161	156	3	9	3/3	4/1	4	+1	137	3	9
7	5/2	PIER	1:31	479	479	464	4	1	5/2	5/2	5	+1	408	5	17
8	4/3	DUNROBIN	1:45	434	434	389	4	7	4/3	5/2	5	0	375	4	7
9	6/1	CRAIGLIATH	2:02	529	529	491	5	17	6/1	6/1	6	0	435	5/4	13
15		OUT		3306	3299	3081	35		18	18	39		2868	37/36	

PLEASE AVOID SLOW PLAY AT ALL TIMES

10	4/2	FUARAN	2:12	174	146	142	3	14	-10	3/2	3	+1	132	3	6
11	6/1	A'CHLACH	2:25	449	446	434	4	4	5/2	5/2	5	+1	426	5	16
12	6/1	SUTHERLAND	2:42	535	535	490	5	16	6/1	4/3	4	+2	472	5	2
13	5/1	BENTS	2:52	180	171	148	3	12	2/4	5/0	5	+1	137	3	12
14	6/1	FOXY	3:07	445	445	439	4	2	6/1	5/2	5	+2	401	5	8
15	6/10	STULAIG	3:20	360	322	300	4	18	6/10	4/2	4	+3	290	4	10
16	5/2	HIGH HOLE	3:34	401	401	395	4	8	6/1	5/2	5	4/2	387	5	18
17	4/3	VALLEY	3:49	416	405	390	4	10	4/3	4/2	4		384	4	4
18	6/1	GLENMORANGIE	4:05	456	456	446	4	6	6/1	5/2	5		437	5	14
12		IN		3416	3327	3184	35		13	17	40		3066	39	
15		OUT		3306	3299	3081	35		18	18	39		2868	37/36	
27		TOTAL		6722	6626	6265	70		31	35	79		5934	76/75	

	TIMINGS BASED ON	HANDICAP
	4 BALL PLAY	NETT

Marker's Signature Player's Signature

	Tim		← Sale	
1. 28/8/16 Bronsfield	-		34	
2 29/8/16.				
CPMIGEND	26	26	32	32
3 30/8/16 J. L. Lee	33	59	31	63
4 30/8/16	-	-	-	-
Blitz Cove at Hvalfagar				
5 30/8/16 Olf	35	94	39	92
31/8/16 King's Bay	35	1209	34	126
31/8/16		159	33	159
Farmen - KIRKOCK	30			
1/9/16 EIE	35	194	34	193
1/9/16 Lundvik	32	227	37	230
2/9		259	28	258
2/9	32			
CHINA - SSSI Pav. m. v. e.		288	37	295
2/9 Pav. m. v. e.	29			
3/9		322	36	331
3/9	34			
ARB. RANGH 3/9/16	33	355	35	366
APV - BEANSIDE 4/9/16		385	37	403
Stankarven	30			
4/9/16		412	28	431
Aberdeen 5/9/16	27			
5/9/16	35	447	28	459
TRUMF 5/9/16		480	33	492
5/9/16	33			
MORAY 6/9/16		513	37	529
6/9/16	33			
CARLE ST. AEF 6/9/16		543	31	560
FORREST - ROSMURK 7/9/16	30			
7/9/16 BEORA		576	32	592
8/9/16	33			
8/9/16	35	611	28	620
8/9/16 E. Doornick	29	640	34	654
9/9/16 2 Doornick	28 34	674	29 28	682
9/9/16				
R. Doornick	36	710	31	713

