



REES JONES
Golf Course Designer
GOLF SHOP
706-467-1200



The Oconee

Holes	Rating/Slope	1	2	3	4	5	6	7	8	9	Out	J	10	11	12	13	14	15	16	17	18	Jn	Tot	Hcp	Net
One	73.5/137	559	397	417	368	171	356	500	203	435	3406		571	401	363	231	448	175	422	546	466	3623	7029		
Two	72.1/134	538	377	396	362	151	340	495	185	411	3255		548	393	356	211	442	166	398	520	443	3477	6732		
Three	70.0/128	513	367	378	330	132	334	478	159	390	3081		529	362	325	187	385	130	379	490	426	3213	6294		
Four	M: 67.4/122 L: 72.9/130	417	315	313	330	132	334	428	159	355	2783		453	362	325	140	362	130	298	490	375	2935	5718		
Men's Handicap		5	9	1	15	13	7	11	17	3			18	8	10	12	6	16	4	14	2				
TIM 9		6/2	4/3	4/3	5/1	4/1	4/3	5/2	4/1	3/4	37/20	TR	6/1	6/1	4/2	4/1	5/2	5/0	6/1	5/2	5/2	12	20	32	
LEIGH 15		6/2	6/1	5/2	5/2	4/2	6/1	6/2	4/1	5/2	47/15	LB	6/1	4/3	6/1	4/2	6/1	3/2	6/1	5/3	6/2	15	15	30	
Par		5	4	4	4	3	4	5	3	4	36		5	4	4	3	4	3	4	5	4	36	72		
JOHN 14		8/0	5/2	5/2	4/2	3/3	4/3	5/3	4/1	6/1	44/17	JF	7/0	6/1	4/3	4/2	5/2	4/1	6/1	7/1	4/3	14	17	31	
PVC		+1	+2	+3	+2	+1	+1	□	□	+1			+2	12	+1	□	□	-1	-1	□	-1				
Mixed	70.7/123	417	315	313	284	132	267	417	159	293	2597		453	263	271	140	362	130	298	429	375	2721	5318		
Five	69.9/122	417	315	313	284	102	267	417	127	293	2535		453	263	271	103	362	109	298	429	375	2663	5198		
Ladies Handicap		11	5	3	13	15	7	1	17	9			12	14	8	16	4	18	6	10	2				

RICK LARSON

Scorer: _____ Attest: _____ Date: _____



JACK NICKLAUS
 Golf Course Designer
 GOLF SHOP
 706-485-0235



Great Waters

SUNDAY

Holes	Rating/Slope	1	2	3	4	5	6	7	8	9	Out	J	10	11	12	13	14	15	16	17	18	Jn	Tot	Hcp	Net
One	73.7/134	409	507	432	186	422	522	466	223	392	3559	J	409	349	559	434	186	416	457	164	540	3514	7073		
Two	71.4/129	391	480	410	169	387	495	403	206	376	3317	n	380	314	521	408	164	409	427	146	495	3264	6581		
Three	Mi 69.3/124 L 74.9/134	371	447	382	152	357	472	361	184	359	3085	i	355	277	489	377	118	352	404	137	475	2984	6069		
Four	Mi 67.3/119 L 72.3/129	329	447	335	143	357	472	318	154	306	2861	a	317	314	426	322	118	352	355	127	475	2806	5667		
Men's Handicap		9	17	5	15	1	13	3	11	7			4	16	10	6	18	14	2	12	8				
TIM		6/1	5/2	6/1	3/2	6/1	6/1	5/2	4/1	4/3	14	TR	4/3	4/2	7/0	5/2	4/1	6/0	6/1	3/2	5/3	14	14	28	
BHN		4/3	6/1	6/1	3/2	6/1	8/0	5/2	2/4	6/1	15	JF	5/2	5/1	7/1	6/1	3/2	5/2	5/2	3/3	6/1	16	15	31	
		-2	-1	-1	-1	-1	□	□	-1	□			+1	+2	+1	+2	+1	□	-1	-2	-1				
Par		4	5	4	3	4	5	4	3	4	36		4	4	5	4	3	4	4	3	5	36	72		
WAT		6/1	6/1	5/2	3/3	6/1	7/1	5/2	4/2	6/1	14	TB	5/2	6/0	6/2	4/3	3/2	4/3	4/3	3/3	-10	18	14	32	
Mixed	70.6/126	329	447	335	143	243	400	318	154	306	2675		317	277	426	322	118	268	355	127	387	2597	5272		
Five	69.7/122	329	390	335	117	243	400	318	130	306	2568		317	260	426	322	99	268	355	105	387	2539	5107		
Ladies Handicap		11	13	5	15	9	3	7	17	1			2	14	6	12	18	16	4	8	10				

Scorer: _____ Attest: _____ Date: _____

GolfSignica.com Copyright © 01/2012. All rights reserved.



JACK NICKLAUS
Golf Course Designer
GOLF SHOP
706-485-0235



Great Waters

MONDAY

Holes	Rating/Slope	1	2	3	4	5	6	7	8	9	Out	J	10	11	12	13	14	15	16	17	18	Jn	Tot	Hcp	Net
One	73.7/134	409	507	432	186	422	522	466	223	392	3559	n	409	349	559	434	186	416	457	164	540	3514	7073		
Two	71.4/129	391	480	410	169	387	495	403	206	376	3317	i	380	314	521	408	164	409	427	146	495	3264	6581		
Three	M: 69.3/124 L: 74.9/134	371	447	382	152	357	472	361	184	359	3085	t	355	277	489	377	118	352	404	137	475	2984	6069		
Four	M: 67.3/119 L: 72.3/129	329	447	335	143	357	472	318	154	306	2861	a	317	314	426	322	118	352	355	127	475	2806	5667		
Men's Handicap		9	17	5	15	1	13	3	11	7			4	16	10	6	18	14	2	12	8				
TIM	9	5/2	5/2	7/0	5/0	5/2	6/1	5/2	4/1	5/1	12	TR	5/2	4/2	6/1	4/3	3/2	5/1	4/3	4/1	7/1	16	12	28	
JOHN	14	5/2	6/1	7/0	4/1	5/2	7/1	5/2	4/2	5/2	13	JF	5/2	4/2	5/3	5/2	3/2	4/3	5/2	4/2	4/2	20	13	33	
		-2	-1	-1	-2	-2	-2	-2	3/1																
Par		4	5	4	3	4	5	4	3	4	36		4	4	5	4	3	4	4	3	5	36	72		
WIGHT	15	6/1	6/1	6/1	4/2	6/1	5/3	5/2	4/2	1/0	14	WB	5/2	4/2	7/1	5/2	-1/0	5/2	5/2	5/1	7/1	13	14	27	
													□	□	-1	□	□	-1	□	-1	-2				
Mixed	70.6/126	329	447	335	143	243	400	318	154	306	2675		317	277	426	322	118	268	355	127	387	2597	5272		
Five	69.7/122	329	390	335	117	243	400	318	130	306	2568		317	260	426	322	99	268	355	105	387	2539	5107		
Ladies Handicap		11	13	5	15	9	3	7	17	1			2	14	6	12	18	16	4	8	10				

Score: _____ Attest: _____ Date: _____



TOM FAZZO
 Golf Course Designer
GOLF SHOP
 706-467-1142

GolfSignage.com Copyright © 9/2011. All rights reserved.

COURSE RATINGS/SLOPE		
Ridge-Bluff	Bluff-Cove	Cove-Ridge
Men	Men	Men
One-73.4/137	73.8/137	73.6/138
Two-71.5/133	71.7/133	71.4/133
Three-69.7/126	69.8/127	69.7/126
Four-68.2/123	68.6/124	68.2/123
Women	Women	Women
Five-71.4/124	71.5/127	71.3/126
Mixed-72.5/127	73.6/130	72.7/127
Four-73.8/132	74.1/135	73.9/134

Ridge

Bluff

Holes	1	2	3	4	5	6	7	8	9	JwOut	J n i t i a l										Hcp	Net	
One	386	384	187	421	202	553	372	497	452	3454	381	405	550	173	388	574	213	397	420	3501			
Two	365	364	163	397	184	528	348	471	422	3242	360	381	526	165	361	544	200	373	392	3302			
Three	313	336	142	372	175	496	339	453	388	3014	340	350	500	137	339	512	191	351	360	3080			
Four	313	336	142	320	152	475	339	453	309	2839	340	350	445	137	339	477	149	351	332	2920			
Men's Hcp	4	7	9	2	6	3	5	8	1	8	4	5	9	7	6	3	1	2					
TM	5/2	5/1	4/1	7/0	4/1	5/3	4/2	5/2	5/2	14	TR	5/1	5/2	5/3	4/1	4/2	5/2	3/3	5/2	7/0	16	14	30
JOHN	5/2	5/2	3/2	6/1	4/2	6/2	5/2	5/2	-10	15	JF	5/1	-10	6/2	-10	6/1	5/3	4/2	5/2	5/2	13	15	28
	+3	+2	+1	□	-1	□	□	□	+1	□	+1	+2	+3	+4	+3	+4	+4	+3					
Par	4	4	3	4	3	5	4	5	4	36	4	4	5	3	4	5	3	4	4	36			
WEIGH	5/2	5/2	4/1	5/2	4/2	6/2	5/2	6/1	6/1	15	LB	5/2	6/1	5/2	-10	5/2	7/1	5/1	-10	4/3	12	15	27
Mixed	313	297	124	320	152	440	295	413	309	2663	340	320	445	132	339	477	149	325	332	2859			
Five	278	297	124	320	152	440	295	413	309	2628	303	320	445	132	262	420	149	325	332	2688			
Ladies Hcp	6	7	9	3	8	2	4	5	1	6	3	4	9	8	5	7	1	2					

Scores: _____

Attest: _____



BOB CUPP
Golf Course Designer

GOLF SHOP
706-467-1564

The Landing

Holes	Rating/Slope	1	2	3	4	5	6	7	8	9	Out	J n i t i a l	10	11	12	13	14	15	16	17	18	Jn	Tot	Hcp	Net
One	74.4/138	413	488	136	458	376	549	196	407	444	3467		464	201	436	371	575	433	548	183	351	3562	7029		
Two	71.4/131	387	466	117	395	343	496	157	380	401	3142		446	176	420	341	497	397	509	147	320	3253	6395		
Three	69.5/126	362	455	107	382	315	467	139	358	372	2957		384	151	382	316	480	371	485	118	307	2994	5951		
Men's Handicap		3	13	17	1	5	11	15	7	9			6	12	4	8	16	2	14	18	10				
TIM		4/3	6/1	3/2	5/2	4/3	6/1	3/2	5/2	4/3	19	TR	5/2	3/2	-10	-10	5/2	6/1	4/3	4/1	-10	11	19	30	
JOHN		5/2	5/3	3/2	5/2	7/6	6/2	3/2	5/2	-10	15	LF	5/2	4/2	5/2	5/2	6/1	5/2	7/2	4/1	4/3	16	15	31	
		-1	-2	-2	-2	-1	-2	-2	2/1				□	□	-1	-2	-1	-2	-1	-1	-2				
Par		4	5	3	4	4	5	3	4	4	36		4	3	4	4	5	4	5	3	4	36	72		
WGAH		5/2	6/2	3/2	5/2	5/2	7/1	3/3	5/2	4/3	19	LB	5/2	4/2	-10	4/3	6/1	5/2	6/2	-10	5/2	14	19	33	
Mixed	M:67.9/122 L:72.5/133	343	455	107	314	315	467	139	321	347	2808		345	151	272	316	480	343	485	118	307	2817	5625		
Four	71.1/129	343	406	88	314	275	446	118	321	347	2658		345	95	272	272	450	343	439	90	292	2598	5256		
Ladies Handicap		7	13	15	5	3	1	17	9	11			10	16	8	14	6	2	12	18	4				

Score: _____ Attest: _____ Date: _____



4775 Old Alabama Road • Johns Creek, Georgia 30022 • 770-442-5960
 Online tee times available at riverpinesgolf.com

RiverPines, Where Golf is Meant to be Played, Learned and Enjoyed!

Please Remember:

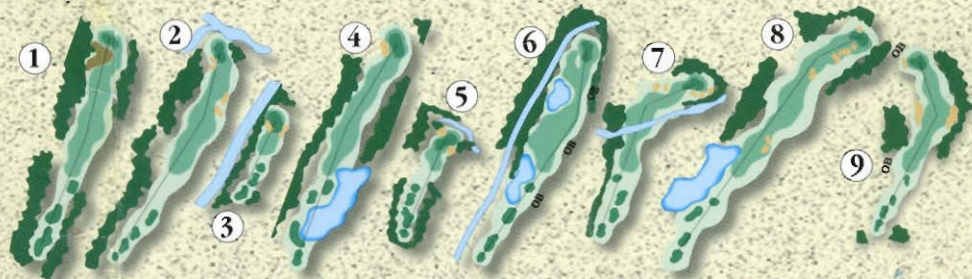
- Proper golf attire required
- Yardages are measured to center of green
- Metal golf spikes are prohibited
- Please Repair Ball Marks
- Please Replace Divots
- Please Smooth Sand in Bunkers
- Pace of play monitored. Play Ready Golf
- Local Rule: The road to the left of #9 fairway and the cart path behind #9 green is Out of Bounds.
- Optional drop areas available on #4, #6 & #13.
- Golf and Practice facilities irrigated by reuse water.



ESID

The policy of RiverPines Golf will be (whenever reasonably possible) to notify players of inclement weather moving into the immediate area. Electric storms are tracked by an Electrical Storm Identification Device (ESID) and players will be alerted by a siren which will signal the closing of the course. When warning signal is sounded players are advised to return to the clubhouse immediately until the inclement weather has passed. Players will be notified by the shop staff when play will resume.

Please visit our website at: www.riverpinesgolf.com



Hole	Rating/Slope	1	2	3	4	5	6	7	8	9	OUT
Black	71.1/132	422	418	172	447	209	436	363	540	325	3332
Blue	69.4/127	401	390	155	431	190	400	348	520	318	3153
White	67.2/119	354	370	142	401	165	342	320	455	293	2842
Silver	M: 64.4/111 L: 69.3/119	344	336	128	330	143	327	306	407	265	2586
Handicap		7	9	17	1	13	5	11	3	15	
JWF		4/3	5/2	3/2	5/2	3/3	6/1	5/1	5/3	3/3	20
TJR		4/3	5/2	3/2	5/2	4/1	5/2	5/1	5/3	4/2	18
Par		4	4	3	4	3	4	4	5	4	35
		□	□	□	□	□	□	□	□	□	
Red	64.1/105	294	300	101	292	91	271	201	363	219	2132

GOLF ASSOCIATES
(800) 438-8726

Date _____
Scorer _____
Attest _____



10	11	12	13	14	15	16	17	18	IN	OUT	TOT	Hcp	Net
374	410	383	420	174	405	184	501	419	3270	3332	6602		
359	390	370	402	165	383	171	495	396	3131	3153	6284		
349	369	343	377	147	358	153	469	378	2943	2842	5785		
305	351	312	336	132	294	117	425	335	2607	2586	5193		
12	6	14	8	18	4	16	10	2					
5/2	5/2												
4/2	5/2												
4	4	4	4	3	4	3	5	4	35	35	70		
255	278	221	282	113	267	84	351	308	2159	2132	4291		

THE REVITALIZATION OF EAST LAKE

In 1993, an Atlanta businessman, philanthropist and golf enthusiast, purchased the East Lake Country Club and donated it to the CF Foundation with two conditions. First, that the legendary course and clubhouse be renovated and restored to its original glory in honor of Bobby Jones, Charlie Yates and the other golf champions who called East Lake their home course. Second, that the profits from the operation of the Club go to the East Lake Foundation to be used for the revitalization of the surrounding neighborhood.

The success of this undertaking has been the direct result of the generous support of East Lake's Founding Sponsor Members. The ambitious goal of community revitalization is being achieved and true to its vision -- East Lake has become.....



EAST LAKE GOLF CLUB

Atlanta, Georgia

"Golf with a Purpose"

Hole	Black	Gold	Blue	White	Red	Par	301-2	TIM	+/-	LEIGH	Handicap
1	426	414	408	395	329	4	5/2	5/2	□	6/1	7
2	212	182	161	135	102	3	4/1	2/3	+	5/0	17
3	390	383	361	325	319	4	4/3	4/2	□	4/3	11
4	440	423	413	403	345	4	5/2	6/1	-1	4/3	3
5	559	547	540	526	473	5	6/2	6/2	-1	5/3	9
6	213	164	149	135	91	3	3/2	4/1	-2	2/4	15
7	434	419	408	397	333	4	5/2	5/2	-2	6/1	1
8	407	355	322	304	275	4	5/2	5/1	-3	4/3	13
9	589	551	532	512	444	5	-10	5/3	-2	6/2	5
Out	3670	3438	3294	3132	2711	36	16	17		20	
Hole	Black	Gold	Blue	White	Red	Par	301-2	TIM	+/-	LEIGH	Handicap
10	512	493	485	465	421	5	5/3	6/2	-3	5/3	6
11	192	178	172	166	138	3	5/0	3/2	-2	2/3	18
12	391	376	368	345	319	4	5/2	5/1	-3	6/1	12
13	476	400	395	376	319	4	5/2	5/1	-4	5/2	10
14	441	429	422	396	365	4	6/1	5/2	-3	5/2	4
15	525	496	470	458	414	5	6/2	5/3	-2	5/3	8
16	480	461	416	385	381	4	5/2	5/2	-2	-10	2
17	455	401	369	332	267	4	4/3	4/2	3/1	5/2	14
18	232	211	199	168	110	3	3/2	4/1		4/2	16
In	3704	3445	3296	3091	2734	36	17	16		18	
Tot	7374	6883	6590	6223	5445	72	16	17		20	
Rating	76.0	73.9	72.6	70.8	72.5		33	33	HDCP	38	
Slope	142	136	133	128	131				NET		

Date _____
 Scorer _____
 Attest _____



To fully enjoy your round, we recommend the following tees:

- 0-6 handicap, Gold Tees
- 7-12 handicap, Blue Tees
- 13-29 handicap, White Tees
- 30+ handicap, Red Tees

DROP ZONE - The Drop Zone is located on the forward teeing ground on Heritage #3. On Heritage #9 it is located on the other side of the bridge.

HERITAGE #3 WATER HAZARD - The water hazard is deemed a lateral water hazard during the play of any other hole.

The boundary of the course is fenced and anything outside the fence is out of bounds. The practice range is out of bounds.

Member Tees Rating/Slope

Heritage - Tradition:	65.9/121
Tradition - Legacy:	65.7/121
Legacy - Heritage:	70.6/138

4445 Britt Rd., Tucker, GA 30084 • (770) 493-4653 • HeritageGolfLinks.com

7:15

LEGACY

HOLE	1	2	3	4	5	6	7	8	9	OUT	
Gold	74.3/146	528	381	143	431	253	391	417	515	442	3501
Blue	72.2/141	492	347	116	416	221	362	390	492	421	3257
White	68.6/131	455	311	92	345	171	338	359	439	377	2887
Men's Handicap	9	7	17	1	11	15	5	13	3		
Tim	7/1	4/3	3/2	5/2	3/2	5/2	5/2	4/3	6/1	18	
John	5/3	4/3	2/3	5/2	3/3	6/1	5/2	4/4	5/2	23	
	-1	-1	-2	-2	-3	-2	-2	-3	-4		
Par	5	4	3	4	3	4	4	5	4	36	
Red	68.2/126	427	206	66	276	123	197	316	398	306	2315
Ladies' Handicap	9	7	17	1	11	15	5	13	3		

Scorer: ○ = Member Tees

8:30 HERITAGE

10:00

I N T I A L	1	2	3	4	5	6	7	8	9	IN	TOT
	363	237	414	371	538	496	123	406	426	3374	6875
355	220	395	340	511	474	115	377	409	3196	6453	
317	182	366	313	492	419	106	344	324	2863	5750	
14	8	6	16	12	4	18	10	2			
5/1	5/1	5/2	4/2	6/1	6/1	3/2	4/2	3/4	16	34	
4/3	3/3	5/2	6/0	6/2	6/2	3/2	4/3	4/3	19	42	
-5	-6	-6	-5	6/4							
4	3	4	4	5	5	3	4	4	36	72	
271	135	284	261	437	387	93	279	192	2339	4654	
14	8	6	16	12	4	18	10	2			

Attest:



2006 Redesigned by *Rees Jones*

**Highlands Course
Championships Hosted:**

1976 U.S. Open	Jerry Pate
1981 PGA Championship	Larry Nelson
1982 Junior World Cup	Spain (Olazabal, Gervas)
1984 U.S. Mid-Amateur	Michael Podolak
2000 Southern Amateur	Ryan Hybl
2001 PGA Championship	David Toms
2002 U.S. Junior Amateur	Charlie Beljan
2011 PGA Championship	Keegan Bradley

**USGA Rules Govern Play
Local Rules Available in Golf Shop**



Chris Borders, CCM
General Manager



Rick Anderson, PGA MP
Director of Golf



Ken Mangum, CGCS
Director of Golf Courses & Grounds



HIGHLANDS COURSE

HOLE	1	2	3	4	5	6	7	8	9	OUT	I	10	11	12	13	14	15	16	17	18	IN	TOT	HCP	NET	
CHAMP	77.0/152	446	543	478	219	567	426	197	470	429	3775	436	457	555	391	468	260	485	210	576	3838	7613			
GOLD	75.9/149	442	540	475	194	548	425	183	446	426	3679	421	443	523	387	451	227	409	207	557	3625	7304			
BLUE	73.9/141	398	512	445	165	541	403	179	421	407	3471	405	421	495	364	413	204	373	186	528	3389	6860			
WHITE	71.3/134	368	471	407	142	501	370	162	376	372	3169	379	393	474	339	365	175	336	154	500	3115	6284			
GREEN	68.8/127	324	448	363	128	469	330	135	349	351	2897	362	339	448	307	335	145	296	124	462	2818	5715			
MEN'S PAR		4	5	4	3	5	4	3	4	4	36		4	4	5	4	3	4	3	5	36	72			
MEN'S HDCP		13	3	5	15	1	9	17	7	11			12	6	2	14	8	16	10	18	4				
TIM		4/2	5/3	5/2	5/0	7/1	5/2	3/2	6/1	4/2	15	TR	4/2	6/1	3/3	-10	4/3	3/2	4/2	3/2	5/3	18	33		
CHRIS		4/3	5/3	5/2	5/1	5/3	4/3	3/3	6/1	6/1	20	CN	5/2	5/2	5/3	4/3	5/2	5/1	5/2	5/1	7/1	17	37		
PVC		-1	-1	-1	-2	-3	-3	-2	-2	-3			-3	-3	-3	-4	-3	-2	-2	-1	0				
MVA		0	0	0	-1	-1	0	+2	0	-1			-1	-2	-2	-2	-1	+1	+1						
JOHN		4/3	5/3	5/2	3/2	5/3	5/2	5/0	6/1	4/3	19	SF	5/2	6/1	5/3	4/3	6/1	-10	5/2	4/1	5/3	16	35		
LOREN		5/2	5/1	5/2	4/2	6/2	6/1	4/1	4/3	5/2	18	CB	5/2	4/3	6/2	6/1	5/2	-10	-10	-10	5/3	13	31		
GREEN	74.5/142	324	448	363	128	469	330	135	349	351	2897		362	339	448	307	335	145	296	124	462	2818	5715		
BLACK	71.6/131	310	441	324	92	436	296	90	295	307	2591		353	318	389	292	323	103	266	103	397	2544	5135		
LADIES' PAR		4	5	4	3	5	4	3	4	4	36		4	4	5	4	3	4	3	5	36	72			
LADIES' HDCP		9	3	7	15	1	13	17	5	11			6	8	2	12	10	18	14	16	4				

SCORER:

ATTEST:

DATE:



2006 Redesigned by *Rees Jones*

**Highlands Course
Championships Hosted:**

1976 U.S. Open	Jerry Pate
1981 PGA Championship	Larry Nelson
1982 Junior World Cup	Spain (Olazabal, Gervas)
1984 U.S. Mid-Amateur	Michael Podolak
2000 Southern Amateur	Ryan Hybl
2001 PGA Championship	David Toms
2002 U.S. Junior Amateur	Charlie Beljan
2011 PGA Championship	Keegan Bradley

**USGA Rules Govern Play
Local Rules Available in Golf Shop**



Chris Borders, CCM
General Manager



Rick Anderson, PGA MP
Director of Golf



Ken Mangum, CGCS
Director of Golf Courses & Grounds



HIGHLANDS COURSE

HOLE	1	2	3	4	5	6	7	8	9	OUT	10	11	12	13	14	15	16	17	18	IN	TOT	HCP	NET	
CHAMP	77.0/152	446	543	478	219	567	426	197	470	429	3775	436	457	555	391	468	260	485	210	576	3838	7613		
GOLD	75.9/149	442	540	475	194	548	425	183	446	426	3679	421	443	523	387	451	227	409	207	557	3625	7304		
BLUE	73.9/141	398	512	445	165	541	403	179	421	407	3471	405	421	495	364	413	204	373	186	528	3389	6860		
WHITE	71.3/134	368	471	407	142	501	370	162	376	372	3169	379	393	474	339	365	175	336	154	500	3115	6284		
GREEN	68.8/127	324	448	363	128	469	330	135	349	351	2897	362	339	448	307	335	145	296	124	462	2818	5715		
MEN'S PAR		4	5	4	3	5	4	3	4	4	36	4	4	5	4	3	4	3	5	36	72			
MEN'S HDCP		13	3	5	15	1	9	17	7	11		12	6	2	14	8	16	10	18	4				
DAVE 0		5																						
TORRY 6			5	5																				
+/-		+1	+1	+2	+3	+2	+2	+3	+2	+1		+2	+1	+2	+3	+2	+3	+2						
CHRIS 10			5																					
TIM 4		5	6	5	4	5	5	4	4	6		10	4	6	5	5	4	4	4	4	7	15	15	30
GREEN	74.5/142	324	448	363	128	469	330	135	349	351	2897	362	339	448	307	335	145	296	124	462	2818	5715		
BLACK	71.6/131	310	441	324	92	436	296	90	295	307	2591	353	318	389	292	323	103	266	103	397	2544	5135		
LADIES' PAR		4	5	4	3	5	4	3	4	4	36	4	4	5	4	3	4	3	5	36	72			
LADIES' HDCP		9	3	7	15	1	13	17	5	11		6	8	2	12	10	18	14	16	4				

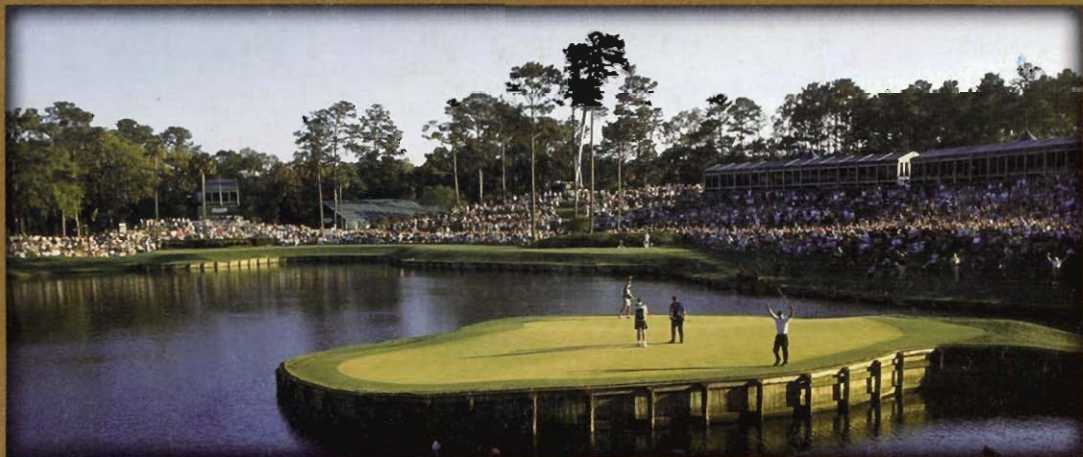
SCORED:

ATTEST:

DATE:

TPC SAWGRASS

HOME OF THE PLAYERS



THE PLAYERS STADIUM COURSE

"I AM STILL SMILING FROM MY WIN AT THE PLAYERS CHAMPIONSHIP IN MAY. IT IS SUCH A FANTASTIC EXPERIENCE FOR ALL OF THE PLAYERS — AND SUCH A PRESTIGIOUS EVENT FOR ME TO WIN... AS A FORMER JACKSONVILLE RESIDENT, I AM ESPECIALLY PROUD TO BE THE PLAYERS CHAMPION, AND I LOOK FORWARD TO RETURNING NEXT YEAR TO DEFEND MY TITLE."

-K.J. CHOI, 2011 PLAYERS CHAMPION

**Tickets to THE PLAYERS 2012 (May 7-13)
are available at PGATOUR.COM**

tpc.com/sawgrass | A PGA TOUR RESORT



Printed on recycled paper



Certified
Member
Course

SAT

		RATED SLOPE										
THE PLAYERS	76.8	155	423	532	177	384	471	393	442	237	583	3642
BLUE	73.9	146	394	507	160	359	446	360	407	195	546	3374
BLENDED	72.3	143	394B	507B	160B	359B	422W	360B	382W	168W	522W	3274
WHITE	70.9	137	360	469	134	324	422	333	382	168	522	3114
GREEN	65.3	125	292	381	97	263	360	269	329	121	453	2565
LADIES' WHITE	78.6	155	CS									
LADIES' GREEN	72.1	135	CS									

	HOLE	1	2	3	4	5	6	7	8	9	OUT
	PAR	4	5	3	4	4	4	4	3	5	
TIM		6/0	6/1	3/2	4/3	5/2	5/1	4/3	3/3	6/2	17
WEIGH		5/2	6/2	5/0	5/2	5/2	4/3	6/1	4/2	7/1	15
CVC		□	□	□	+1	+1	□	+1	+2	+1	
PVC		-2	-1	-1	□	□	+1	-1	□	□	
GENTLEMEN'S HANDICAP		11	15	17	9	3	13	1	7	5	
JOHN 14		5/2	7/0	3/2	5/2	5/2	5/2	4/3	4/2	6/2	17
CHRIS 15		5/2	6/2	4/1	5/2	-10	5/2	6/1	4/2	5/3	15
LADIES' HANDICAP		11	1	17	5	7	13	9	15	3	
DATE	SCORER										

424	558	358	181	481	449	523	137	462	3573	7215
388	519	332	156	436	416	486	128	426	3287	6661
388B	469W	332B	156B	377W	366W	486B	128B	426B	3128	6402
351	469	313	141	377	366	470	115	387	2989	6103
247	395	243	109	334	288	410	92	336	2454	5019

Pete Dye
Architect
 World Golf Hall
 of Fame Member

THE PLAYERS
 Stadium Course

	10	11	12	13	14	15	16	17	18	IN	TOTAL	HCP	NET
	4	5	4	3	4	4	5	3	4	36	72		
TR	5/1	6/2	3/3	4/1	4/3	4/3	6/1	5/0	4/3	16	33	10	5
LB	5/2	7/1	5/1	4/1	4/3	5/2	7/1	2/4	5/2	17	32	10	
CVC	+1	+1	+2	□	□	□	-1	2/1					
PVC	-1	-1	□	-1	-1	-1	-2	□	+1				
	12	8	16	18	4	6	10	14	2				
JF	5/2	6/2	4/2	2/3	4/3	4/3	6/2	5/1	5/1	20	31		
ON	6/1	6/2	6/0	-10	10	5/2	6/2	4/2	5/2	11	26		
	10	2	14	18	12	8	4	16	6				

ATTEST

TPC SAWGRASS
HOME OF THE PLAYERS



DYE'S VALLEY COURSE

Winn-Dixie
Jacksonville OPEN



Tickets to the Winn-Dixie Jacksonville Open (October 17-23)
are available at winn-dixiejacksonvilleopen.com

100% of ticket purchase benefits Jacksonville Area Charities

tpc.com/sawgrass | A PGA TOUR RESORT



Printed on recycled paper



Certified
Member
Course

IRRIGATED SLOPE

TPC	73.9	136	554	170	342	427	153	462	323	500	436	3367
BLUE	71.9	131	535	152	317	399	137	424	313	489	404	3170
WHITE	69.9	130	500	129	292	373	126	386	291	473	378	2948
BLENDED	67.3	125	430G	129W	292W	308G	126W	319G	291W	473W	297G	2665
GREEN	65.8	121	430	107	276	308	105	319	254	409	297	2505
LADIES' WHITE	76.2	139										
LADIES' BLENDED	72.1	132										
LADIES' GREEN	70.2	127										

CS

HOLE	PAR	1	2	3	4	5	6	7	8	9	OUT
		5	3	4	4	3	4	4	5	4	
TIM	9	6/2	3/2	4/2	4/3	2/3	5/2	4/2	5/3	5/2	21
Wendy	15	7/1	3/3	6/0	5/2	3/3	4/3	5/2	6/2	6/1	17
CVC		□	□	-1	□	□	□	-2	-2	-3	
PVC		□	-1	□	+1	+2	+3	+2	+2	+3	
GENTLEMEN'S HANDICAP		7	11	17	5	15	1	13	9	3	
JOHN	14	6/2	3/3	5/1	5/2	3/2	6/1	3/4	5/3	6/1	19
CHRIS	18	7/1	4/2	4/3	6/1	3/3	4/3	6/1	7/1	4/3	15
LADIES' HANDICAP		1	17	15	5	11	7	13	3	9	

DATE

SCORER

413	227	362	406	203	399	559	499	429	3497	6864
402	211	350	398	193	385	523	484	408	3354	6524
389	177	326	372	167	347	513	476	377	3144	6092
316G	145G	326W	304G	167W	347W	459G	476W	318G	2858	5523
316	145	263	304	120	291	459	405	318	2621	5126

CS

CS

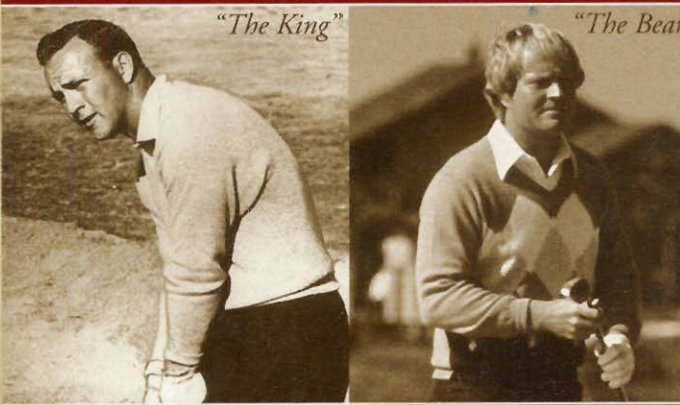
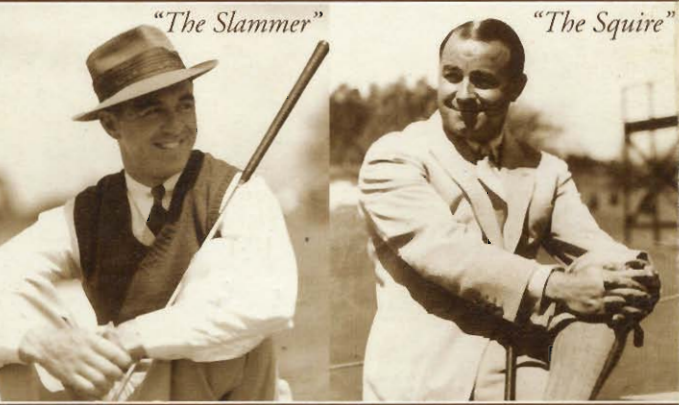
Pete Dye
Bobby Weed
Architects
Jerry Pate
Player Consultant
 Dye's Valley Course

	10	11	12	13	14	15	16	17	18	IN	TOTAL	HCP	NET
	4	3	4	4	3	4	5	5	4	36	72		
TR	5/2	4/2	4/2	4/3	3/2	3/3	6/1	5/2	5/2	19	40		
LB	5/2	4/2	4/3	5/2	4/2	5/1	6/2	5/2	4/3	19	36		
CVC	-4	-5	-4	-3	-3	-2	-3	-3	-3				
PVC	+2	+1	+2	+3	+3	4/3							
	4	6	14	8	12	16	10	18	2				
JF	4/3	3/3	6/1	5/2	4/2	5/1	5/3	5/2	6/1	18	37		
CR	5/2	3/3	5/2	-10	4/2	5/2	-11	6/2	4/3	17	35		
	12	10	14	6	18	16	2	8	4				

ATTEST

SLAMMER & Squire

KING & Bear



SAM SNEAD

GENE SARAZEN

ARNOLD PALMER

JACK NICKLAUS



SLAMMER & SQUIRE

2 World Golf Place • St. Augustine, FL 32092 • Tee Times: 904.940.6088
www.golfvgy.com



KING & BEAR

1 King & Bear Drive • St. Augustine, FL 32092 • Tee Times: 904.940.6088
www.golfvgy.com



"I've been involved in many golf course projects, but nothing to the magnitude of this project. Giving my input on The Slammer & Squire and being associated with The World Golf Hall of Fame has been a real thrill."
- Gene Sarazen

WHERE LEGENDS COME TO PLAY.



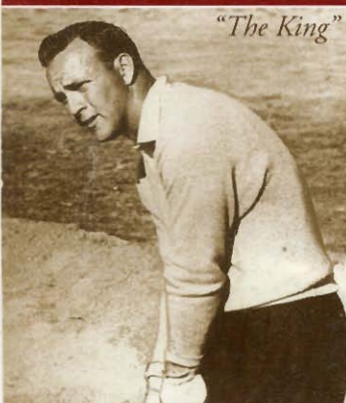
USGA RULES GOVERN ALL PLAY.

"We built a golf course that people will enjoy playing and included the need for some good shot making. At the World Golf Hall of Fame people can see how the game was started and played."
- Sam Snead

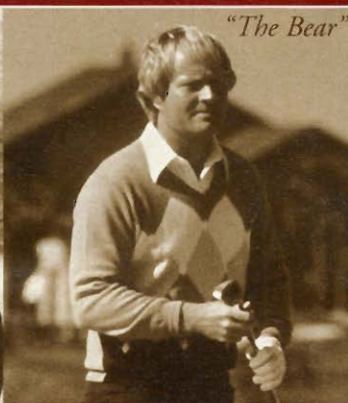
OLE	Rating/Slope	1	2	3	4	5	6	7	8	9	OUT	10	11	12	13	14	15	16	17	18	IN	TOT	HCP	NET
ONE	72.7/127	385	186	394	522	426	445	178	541	401	3478	379	517	442	205	311	147	576	459	425	3461	6939		
ACK	71.3/125	377	170	380	501	394	423	161	527	383	3316	365	510	421	192	300	135	561	448	412	3344	6660		
JE X	69.2/121	358	154	361	486	367	381	143	475	361	3086	343	472	373	161	284	128	527	387	371	3046	6132		
HITE	M: 66.7/113 L: 72.4/126	336	121	306	467	351	360	128	442	341	2852	295	448	361	148	273	122	481	372	359	2859	5711		
N'S HCP		9	15	13	1	5	3	17	11	7		14	12	2	16	18	10	6	4	8				
T.M		5/2	3/2	5/1	4/4	4/3	4/3	3/2	5/2	5/2	21	4/2	5/2	5/2	3/2	4/2	3/2	6/2	5/2	6/1	17	21	38	
SOHN		6/1	4/1	5/2	5/3	5/2	4/3	3/2	4/2	4/3	19	4/3	6/2	5/2	3/3	3/3	5/3	4/3	5/2	23	19	42		
PVC		+1	+2	+1	+2	+3	+3	+3	+3	+2		+1	+1	+1	+1	□	-1	+2	3/1					
R		4	3	4	5	4	4	3	5	4	36	4	5	4	3	4	3	5	4	4	36	72		
SEIGH		5/2	5/1	6/1	6/2	5/2	6/1	4/1	6/2	4/3	15	4/3	6/2	6/1	3/2	5/1	3/3	7/1	5/2	5/2	17	15	32	
REEN	L: 68.0/115	271	94	280	417	315	321	107	424	259	2488	265	402	317	123	245	94	448	326	288	2508	4996		
DIES' HCP		13	17	9	1	7	5	15	3	11		12	4	8	18	14	16	2	6	10				
ITE		SCORER										ATTTEST										TEES		

KING & Bear

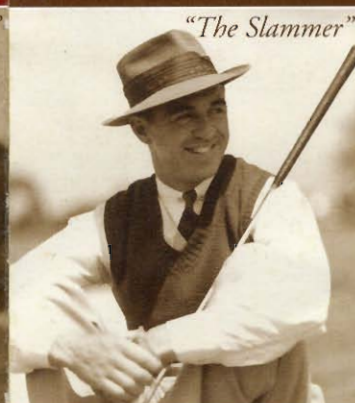
SLAMMER & Squire



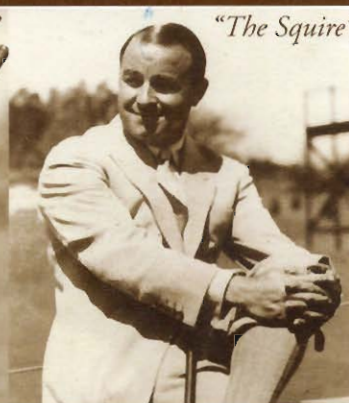
"The King"



"The Bear"



"The Slammer"



"The Squire"

ARNOLD PALMER

JACK NICKLAUS

SAM SNEAD

GENE SARAZEN

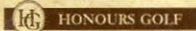


WORLD GOLF VILLAGE®

Where legends come to play.

KING & BEAR

1 King & Bear Drive • St. Augustine, FL 32092 • Tee Times: 904.940.6088
www.golfwgv.com



WORLD GOLF VILLAGE®

Where legends come to play.

SLAMMER & SQUIRE

2 World Golf Place • St. Augustine, FL 32092 • Tee Times: 904.940.6088
www.golfwgv.com



"Jack and I were excited about working on this project together because of the beautiful venue and its affiliation with a great project like The World Golf Village."

- Arnold Palmer

WHERE LEGENDS COME TO PLAY.



USGA RULES GOVERN ALL PLAY.

"Arnold and I have been good friends for many years, we've also been competitors both on the golf course and in business, so I see The King & Bear as a wonderful opportunity to bring our friendship together."

- Jack Nicklaus

HOLE	Rating/Slope	1	2	3	4	5	6	7	8	9	OUT	10	11	12	13	14	15	16	17	18	IN	TOT	HCP	NET
STONE	74.1/138	426	435	227	383	546	194	573	462	448	3694	436	163	412	557	200	360	467	427	563	3585	7279		
BLACK	72.6/133	399	412	208	354	532	180	542	437	430	3494	406	148	373	531	179	334	441	409	540	3361	6855		
BLUE	70.8/131	381	393	181	343	519	157	529	416	407	3326	375	137	349	521	154	311	416	390	527	3180	6506		
WHITE	M: 68.5/127 L: 74.4/135	371	353	167	309	497	147	508	389	329	3070	356	123	315	484	133	302	384	324	496	2917	5987		
MEN'S HCP		5	7	13	11	17	15	9	3	1		8	18	10	14	12	4	2	6	16				
TIM		4/3	4/3	3/2	4/2	5/2	3/2	5/3	5/2	5/2	24	TR	4/3	4/1	5/1	5/2	4/1	4/3	5/2	5/2	5/2	17	21	38
JOHN		5/2	5/2	3/3	5/2	6/1	3/2	4/2	6/1	4/3	18	SF	6/1	4/1	4/3	7/1	4/2	6/1	5/2	5/2	6/1	14	18	32
		+1	+1	0	-1	+1	+1	+2	+3	+2		+3	+3	+2	+3	+2	+3	3/2						
PAR		4	4	3	4	5	3	5	4	4	36	4	3	4	5	3	4	4	4	5	36	72		
WELSH		5/2	5/2	4/2	5/2	7/0	5/1	6/2	6/1	5/2	14	LD	4/3	4/1	4/3	6/2	4/2	6/1	5/2	4/3	6/1	18	14	32
GREEN	L: 69.1/124	342	328	146	257	434	125	449	373	257	2711	307	96	265	436	118	220	310	283	373	2408	5119		
LADIES' HCP		3	7	11	9	13	17	1	5	15		4	16	6	8	18	12	10	2	14				
DATE		SCORER										ATTEST										TEES		

CHARLIE

BRANDON W 11-178

RATED SLOPE

THE PLAYERS	76.8	155	423	532	177	384	471	393	442	237	583	3642
BLUE	73.9	146	394	507	160	359	446	360	407	195	546	3374
BI ENDED	72.3	143	394B	507B	160B	359B	422W	360B	382W	168W	522W	3274
WHITE	70.9	137	360	469	134	324	422	333	382	168	522	3114
GREEN	65.3	125	292	381	97	263	360	269	329	121	453	2565
LADIES' WHITE	78.6	155										
LADIES' GREEN	72.1	135										

CS

HOLE	1	2	3	4	5	6	7	8	9	OUT
PAR	4	5	3	4	4	4	4	3	5	36

TIM	5/1	6/1	3/2	6/6	7/0	5/1	4/3	5/1	5/3	12
JOHN	5/2	6/1	-10	-10	4/3	6/1	5/2	3/3	7/1	13
PVC	-1	-1	□	□	-1	-1	□	-1	□	

GENTLEMEN'S HANDICAP	11	15	17	9	3	13	1	7	5	
----------------------	----	----	----	---	---	----	---	---	---	--

WGH	5/2	-10	4/1	5/2	5/2	4/3	6/1	4/2	6/2	15
-----	-----	-----	-----	-----	-----	-----	-----	-----	-----	----

LADIES' HANDICAP	11	1	17	5	7	13	9	15	3	
------------------	----	---	----	---	---	----	---	----	---	--

DATE SCORER

424	558	358	181	481	449	523	137	462	3573	7215
388	519	332	156	436	416	486	128	426	3287	6661
388B	469W	332B	156B	377W	366W	486B	128B	426B	3128	6402
351	469	313	141	377	366	470	115	387	2989	6103
247	395	243	109	334	288	410	92	336	2454	5019

CS

CS

Pete Dye
Architect

World Golf Hall
of Fame Member

THE PLAYERS
Stadium Course

	10	11	12	13	14	15	16	17	18	IN	TOTAL	HCP	NET
	4	5	4	3	4	4	5	3	4	36	72		
TR	5/1	5/3	3/3	4/1	4/3	4/3	5/2	5/0	4/3	19	12	31	
JE	6/1	5/3	4/2	5/0	5/2	5/2	4/4	6/0	5/2	16	13	29	
JG													
PVC	□	□	+1	+2	+3	4/3							
	12	8	16	18	4	6	10	14	2				
VB	4/3	7/1	4/2	5/0	6/1	4/3	7/1	5/1	-10	12	15	27	
	10	2	14	18	12	8	4	16	6				

ATTEST



Hartough 0199



Hole	1	2	3	4	5	6	7	8	9	Out	P	10	11	12	13	14	15	16	17	18	In	Tot	Hcp	Net
Heritage	410	502	469	200	540	419	195	473	332	3540	L	451	436	430	373	192	588	434	185	472	3561	7101		
Dye	392	495	411	187	511	404	172	435	322	3329	A	421	413	404	354	165	541	395	174	444	3311	6640		
X Sea Pines	347	471	381	165	500	373	158	420	310	3125	E	398	387	391	339	148	526	361	152	424	3126	6251		
Handicap	11	13	9	15	5	3	17	1	7		R	12	6	8	10	18	4	14	16	2				
TIM	4/2	6/1	5/2	4/1	6/2	5/2	3/2	5/2	4/3	17		5/1	4/3	6/1	4/2	4/1	6/2	4/2	3/4	6/1	15	17	32	
BOBW	4/3	7/1	6/1	-10	6/2	5/2	4/1	6/1	4/3	14		5/2	4/3	6/1	4/3	5/0	6/2	4/3	3/2	5/2	18	14	32	
PVC +/-	-1	-1	□	+1	+1	+1	+2	+3	+3		+/-	+2	+2	+2	+1	+2	+2	+1	+1	□				
Par	4	5	4	3	5	4	3	4	4	36		4	4	4	4	3	5	4	3	4	35	71		
WEIGH	6/1	7/1	5/2	4/2	7/1	4/3	3/3	5/2	5/2	17		6/1	6/1	5/2	4/2	3/3	6/2	5/2	3/3	6/1	17	17	34	
+/-											+/-													
Handicap	11	3	9	17	5	13	15	1	7			10	14	12	8	16	4	6	18	2				
Palmetto	321	424	315	140	418	318	113	341	277	2667		326	322	292	307	107	421	304	130	332	2541	5208		

Date: _____ Scorer: _____
 Attest: _____

Rating/Slope:
 Heritage: 75.6/147 Dye: 73.0/141 Sea Pines: 71.3/136 Palmetto: 70.7/124

USGA RULES SHALL
GOVERN ALL PLAY

Men	Course Rating	Slope Rating
Tournament	75.2	141
Heritage	74.7	140
Dye	72.5	134
Sea Pines	70.4	128
Carolina	68.7	125
Palmetto	66.4	112

Women	Course Rating	Slope Rating
Sea Pines	76.7	139
Carolina	74.6	133
Palmetto	71.6	123



Cary Corbitt
PGA Director of Sports



Bobby Downs
PGA Staff Professional



Jim Cregan
Golf Course Superintendent



Pete Dye
Course Architect



The SealPinesResort

100 North Sea Pines Drive
Hilton Head Island, SC 29928
1-800-955-8337 (813) 842-6184
www.sealpines.com



AUDUBON INTERNATIONAL
Heron Point has been designated a Certified Audubon Cooperative Sanctuary.



Heron Point

BY PETE DYE

HILTON HEAD ISLAND, SC



Heron Point

BY PETE DYE



Hole	1	2	3	4	5	6	7	8	9	Out	P	10	11	12	13	14	15	16	17	18	In	Tot	Hcp	Net
Heritage	403	312	386	239	411 314	547	185	420	519	3452 3425	P	367	617	413	157	414 357	470	233 227	499	436 403	3606 3510	7058		
Dye	376	286	370	208	380	539	170	412	514	3255	A	348	550	403	141	350	440	196	487	377	3292	6547		
Sea Pines	321	268	341	160	349	508	148	386	492	2973	Y	329	516	381	128	328	393	171	460	366	3072	26045		
Carolina	312	260	318	130	311	495	124	360	480	2790	E	300	448	360	107	304	348	140	447	350	2804	5594		
Palmetto	13	15	5	11	9	3	17	7			R	18	12	4	16	6	2	14	8	10				
TIM	5/13/3	4/3	5/1	7/0	4/2	3/2	4/3	5/3	7/1	12	2	3/3	4/1	5/2	4/1	5/2	4/1	5/2	4/1	5/2	4/1	16	17	33
JOHN	6/1	4/2	4/3	4/2	5/2	5/3	3/2	3/2	7/1	20	5	3/3	4/1	5/2	2/2	5/2	4/3	5/3	5/3	5/2	2/1	20	41	
PVC	+/-	0	-1	0	-1	-2	-2	-3	-2		8	-2	-2	-2	-3	-2	4	3						
PAR	4	4	4	3	4	5	3	4	5	36		4	5	4	3	4	4	3	5	4	36	72		
LEIGHT	5/2	5/2	4/3	4/2	4/3	7/1	4/2	7/0	7/0	15	10	5/2	5/3	5/2	4/3	5/1	6/1	3/3	4/2	6/1	18	15	33	
+/-																								
Handicap	11	13	5	15	9	3	17	1	7			14	8	12	18	10	6	16	4	2				
Palmetto	295	244	301	115	305	422	119	319	417	2537		280	448	310	107	304	326	134	413	317	2639	5176		
Family	199	206	241	103	241	296	95	237	273	1891		193	274	216	87	170	231	112	308	217	1808	3699		

DATE: _____ SCORER: _____

ATTEST: _____

Shot Selector
841
800-878-9288

USGA Rules Govern Play

Yardages are measured to the center of the green.

Sprinkler markers are measured to front edge, center and back edge of green.

For everyone's enjoyment, please observe proper pace of play.

Please respect the privacy of our homeowners.

Restrooms:

Holes 5, 9, 15

Water Fountains:

Holes 5, 9, 13, 15

Snack Bar:

Hole 9



Cary Corbitt
PGA Director of Sports



Bobby Downs
PGA Staff Professional



Jim Cregan
Golf Course Superintendent



Mark McCumber
Course Architect



100 North Sea Pines Drive • Hilton Head Island, SC 29928
1-800-955-8337 (843) 842-8484
www.seapines.com

OCEAN COURSE



The Sea Pines Resort

Ocean Course



Hole	1	2	3	4	5	6	7	8	9	Out	P	10	11	12	13	14	15	16	17	18	In	Tot	Hcp	Net
Heritage	391	401	180	527	388	423	216	401	518	3445	L	388	157	390	410	517	210	374	455	560	3461	6906		
McCumber	356	382	162	500	365	400	197	375	494	3231	A	368	147	366	363	498	190	361	430	539	3262	6493		
Sea Pines	345	373	150	486	340	370	173	362	480	3079	E	359	132	355	350	485	180	338	386	508	3093	6172		
Handicap	7	1	17	9	3	11	13	15	5		R	10	18	12	4	8	16	14	2	6				
TIM	4/3	7/0	3/2	6/2	6/1	4/2	4/1	4/2	5/3	16		4/2	3/2	4/2	4/3	5/3	3/2	4/2	5/2	4/4	22	16	38	
JOHN	5/2	6/1	4/1	5/3	5/2	4/3	4/2	4/2	6/2	18		3/4	3/2	4/3	4/3	5/3	3/2	4/3	4/3	7/1	24	18	42	
PVC	+/-	+1	0	+1	0	-1	-2	-3	-2			-3	-3	-4	-4	-4	4/3							
PAR	4	4	3	5	4	4	3	4	5	36		4	3	4	4	5	3	4	4	5	36	72		
WGH	5/2	6/1	3/3	5/3	7/0	5/2	5/1	5/2	5/3	17		6/1	4/2	4/2	5/2	5/3	3/2	4/3	5/2	6/2	20	17	37	
+/-																								
Handicap	11	5	17	3	7	9	15	13	1			12	18	10	8	4	16	14	6	2				
Palmetto	304	340	130	395	317	342	150	305	452	2735		310	118	318	302	410	135	242	310	445	2590	5325		
Family	190	220	100	280	200	190	99	215	297	1791		265	75	200	250	300	108	183	219	284	1884	3675		

DATE: _____

SCORER: _____

ATTEST: _____

Shot Selector
800.878.9288

1. USGA rules govern all play except where local rules prevail.
2. Out of bounds defined by white posts and inside edge of all roads.
3. Lateral Hazards are defined by red stakes and lines.
4. Water Hazards are defined by yellow stakes and lines.
5. Sprinkler head yardages are measured to the front, middle and back of greens.
6. Please fill divots with sand, repair ball marks on the greens, and after raking a bunker, leave rake in the bunker.
7. Observe all cart signs and remember that carts are restricted to the path around greens and tees.
8. Proper attire is required at all times, and for the enjoyment of everyone the pace of play will be monitored, so keep pace with the group ahead.



Roger Warren, PGA
President of Kiawah Island Golf Resort



Brian Gerard, PGA
Director of Golf



Ric Ferguson, PGA
PGA Head Professional



Brad French, CGCSA
Certified GCSSA Superintendent

One Sanctuary Beach Drive
Kiawah Island, SC 29455
843.768.2121
www.kiawahgolf.com

Gary Player

A Gary Player Course.

HOLE	1	2	3	4	5	6	7	8	9	OUT	10	11	12	13	14	15	16	17	18	IN	TOT	HCP	NET
TOURNAMENT 134/73.2	372	171	535	453	410	180	354	361	574	3410	443	496	223	408	174	542	401	363	415	3465	6875		
COUGAR 125/71.3	342	158	517	432	390	167	337	339	536	3218	419	480	201	388	164	511	382	352	388	3285	6503		
PLAYER X 120/69.4	330	146	494	398	369	163	331	334	517	3082	390	475	183	354	154	503	370	328	373	3130	6212		
KIAWAH M 114/66.8 L 126/71.6	282	126	444	364	336	136	307	278	458	2731	356	458	150	315	141	479	328	300	346	2873	5604		
CAROLINA 118/67.6	243	100	413	324	305	98	249	218	410	2360	286	378	126	281	123	411	286	260	265	2416	4776		
JOHN	3/4	3/2	4/4	5/2	5/2	3/2	5/2	5/2	7/1	21	5/2	5/3	4/1	5/2	4/1	6/2	4/3	3/4	4/3	21	42		80 J
TIM	4/2	3/2	5/3	4/3	6/1	3/2	4/3	4/2	9/3	21	5/2	5/4	4/1	4/3	3/2	5/3	5/1	4/2	5/2	18	39		78 T
	-1	-1	-2	-1	-2	-2	-1	-1	0		-1	-1	-1	□	+1	+2	+1	□	13W				
+/-																							
PAR	4	3	5	4	4	3	4	4	5	36	4	5	3	4	3	5	4	4	4	36	72		
HCP TOURNAMENT COUGAR PLAYER KIAWAH (M)	13	17	5	1	7	15	9	11	3		2	10	16	8	18	4	14	12	6				
HCP KIAWAH (L) CAROLINA	11	13	1	5	3	17	9	15	7		10	14	18	12	16	2	6	8	4				

SCORER: _____

ATTEST: _____

DATE: _____

1. USGA rules govern all play except where local rules prevail.
2. Out of bounds defined by white posts and inside edge of all roads.
3. Lateral Hazards are defined by red stakes and lines.
4. Water Hazards are defined by yellow stakes and lines.
5. Environmental Hazards are defined by red stakes with green tops. Play from these hazards is prohibited.
6. Sprinkler head yardages are measured to the front, middle and back of greens.
7. Please fill divots with sand, repair ball marks on the greens, and after raking a bunker, leave rake in the bunker.
8. Observe all cart signs and remember that carts are restricted to the path around greens and tees.
9. Proper attire is required at all times, and for the enjoyment of everyone the pace of play will be monitored, so keep pace with the group ahead.



ENJOY OUR OTHER FOUR GREAT COURSES
BY FOUR OF THE BIGGEST NAMES IN GOLF

COUGAR POINT
a Gary Player Design

OSPREY POINT
a Tom Fazio Design

OAK POINT
a Clyde B. Johnston Design

THE OCEAN COURSE
a Pete Dye Design

HOST SITE OF...

1990 PGA Cup Matches
2006 Carolina's Amateur

One Sanctuary Beach Drive
Kiawah Island, SC 29455
843.768.2121
www.kiawahgolf.com

Jack Nicklaus
A Jack Nicklaus Course.

HOLE	1	2	3	4	5	6	7	8	9	OUT	I	10	11	12	13	14	15	16	17	18	IN	TOT	HCP	NET
TOURNAMENT 138/73.6	413	549	409	211	543	388	189	468	428	3598	I N T I A L S	542	408	445	512	173	385	179	385	434	3463	7061		
TURTLE 194/71.5	381	513	377	188	505	364	169	426	382	3305		515	370	410	497	159	347	150	350	400	3198	6503		
NICKLAUS M 125/69.2 L 139/76.6	370	492	365	180	496	346	147	405	348	3149		502	341	397	475	149	340	143	334	380	3061	6210		
KIAWAH M 120/67.7 L 132/73.4	350	472	341	160	476	306	127	383	328	2943		482	314	377	440	129	330	113	301	360	2846	5789		
CAROLINA 126/71.5	289	418	303	145	454	259	108	328	317	2621		443	274	350	403	124	321	104	255	315	2589	5210		
TIM	4/2	5/3	4/3	5/0	5/3	3/3	3/2	5/2	7/0	18	TR	5/2	4/3	4/3	5/2	3/2	3/4	3/2	5/1	4/3	22	18	40	
JOHN	5/2	6/2	5/2	4/1	6/2	6/1	4/1	4/3	5/2	16	JF	6/2	4/3	5/2	5/3	3/2	5/2	3/3	5/1	6/1	19	16	35	
+/-	□	+1	+2	+1	+2	+3	+4	+3	+2		PVC	+2	+2	+3	+2	+2	+3	+2	2/1					
PAR	4	5	4	3	5	4	3	4	4	36		5	4	4	5	3	4	3	4	4	36	72		
LC 194	5/2	-10	5/2	3/3	5/3	5/2	4/2	5/2	5/2	18	LB	6/2	6/1	5/2	6/2	4/2	4/3	3/3	4/3	5/2	20	18	38	
HCP TOURNAMENT TURTLE NICKLAUS	11	3	9	15	7	13	17	1	5			10	6	2	12	16	8	14	18	4				
HCP KIAWAH CAROLINA	11	1	9	17	3	13	15	7	5			8	4	10	2	16	12	18	14	6				

SCORER:

ATTEST:

DATE:

1. USGA rules govern all play except where local rules prevail.
2. Lateral Hazards are defined with red stakes and lines.
3. Water Hazards are defined with yellow stakes and lines.
4. Marked sprinkler heads are measured to the front, middle and back of greens.
5. Proper attire required at all times.
6. Please fill divots with sand, repair ball marks on the greens, and after raking a bunker, leave the rake in the bunker.
7. Cart paths are not an artificial surface, therefore no relief.
8. All sand areas on the golf course are not hazards and therefore are played as through the green.

DUNE PRESERVATION:

The dunes and the natural vegetation are important elements of this course and our coastline. PLEASE use care when playing from these areas. Golf carts are prohibited in the dunes.

ENJOY OUR OTHER FOUR GREAT COURSES
BY FOUR OF THE BIGGEST NAMES IN GOLF

COUGAR POINT
a Gary Player Design

OSPREY POINT
a Tom Fazio Design

OAK POINT
a Clyde B. Johnston Design

TURTLE POINT
a Jack Nicklaus Design

1000 Ocean Course Drive
Kiawah Island, SC 29455
843.266.4670
www.kiawahgolf.com



HOST SITE OF...

- 1991 Ryder Cup
- 2005 PGA National Professional Championship
- 2007 Senior PGA Championship
- 2012 PGA Championship

A Pete Dye Course.

HOLE	1	2	3	4	5	6	7	8	9	OUT	10	11	12	13	14	15	16	17	18	IN	TOT	HCP	NET	
TOURNAMENT	144/77.3	395	543	390	453	207	455	527	197	464	3631	439	562	466	404	194	421	579	221	439	3725	7356		
OCEAN	138/73.6	375	528	367	432	185	377	505	170	415	3354	378	521	420	371	171	391	555	197	421	3425	6779		
DYE	134/72.0	365	501	319	401	177	345	493	166	406	3173	360	506	412	364	161	381	540	182	396	3302	6475		
KIAWAH	M-132/70.9 L-132/76.7	357	495	310	396	171	331	484	151	399	3094	347	476	398	333	151	358	491	168	386	3108	6202		
CAROLINA	124/72.7	306	419	268	328	117	299	432	105	344	2618	310	440	326	312	132	306	447	122	314	2709	5327		
TIM		5/1	6/2	5/2	5/2	4/1	4/2	8/0	4/1	5/2	13	5/1	5/2	4/3	5/1	3/2	5/1	6/2	4/2	5/2	16	13	29	72
JOHN		5/1	7/1	4/3	5/2	6/0	4/3	6/2	3/2	5/2	16	5/1	5/3	4/3	5/2	3/3	-10	7/1	5/1	4/3	17	16	33	57
+/-		0	+1	0	0	+1	0	-1	-2	-2		-2	-3	-3	-4	8/4								
PAR		4	5	4	4	3	4	5	3	4	36	4	5	4	4	3	4	5	3	4	36	72		
WTAH		5/2	5/3	4/3	5/2	6/0	5/2	8/0	3/3	5/2	17	4/3	5/3	4/3	3/4	-10	6/1	5/3	5/1	5/2	20	17	37	62
RM202																								
HCP TOURNAMENT		15	3	9	1	11	13	7	17	5		18	10	8	12	14	16	4	6	2				
HCP OCEAN																								
HCP DYE																								
HCP KIAWAH																								
HCP CAROLINA		9	1	11	3	15	13	5	17	7		12	4	6	10	16	14	2	18	8				

SCORER: _____

ATTEST: _____

DATE: _____

1. USGA rules govern all play except where local rules prevail.
2. Out of bounds defined by white posts and inside edge of all roads.
3. Lateral Hazards are defined with red stakes and lines.
4. Water Hazards are defined with yellow stakes and lines.
5. Marked sprinkler heads are measured to the front, middle and back of greens.
6. Proper attire required at all times.
7. Repair all divots, ball marks on greens and rake bunkers.
8. Carts are restricted to paths around tees and greens.
9. Slow play will be monitored for the enjoyment of everybody. Please keep pace with the group ahead.
10. Private coolers not allowed.



Roger Warren, PGA
President of Kiawah Island Golf Resort



Brian Gerard, PGA
Director of Golf



Scott Ammon, PGA
Head Professional



Bill Daly, GCSAA
Golf Course Superintendent

One Sanctuary Beach Drive
Kiawah Island, SC 29455
843.266.4100
www.kiawahgolf.com

Clyde Johnston

A Clyde Johnston Course.

DAVE MASON

HOLE	1	2	3	4	5	6	7	8	9	OUT	10	11	12	13	14	15	16	17	18	IN	TOT	HCP	NET
TOURNAMENT 137/72.4	535	181	415	520	394	430	168	523	152	3318	399	193	528	425	345	147	380	560	406	3383	6701		
OAK 135/70.9	520	168	380	510	378	419	158	515	141	3189	389	179	520	411	336	134	358	544	390	3261	6450		
JOHNSTON 132/69.2	510	143	352	502	368	394	149	500	135	3053	364	145	510	400	326	118	344	530	315	3052	6105		
KIAWAH M 128/67.1 L 135/72.3	473	108	300	460	339	380	134	447	102	2743	342	127	458	370	300	105	320	455	295	2772	5515		
CAROLINA 121/69.8	438	104	254	415	299	330	128	424	92	2484	302	100	438	320	270	90	314	419	217	2470	4954		
TIM	6/2	3/2	4/3	6/2	3/3	5/2	3/2	5/3	3/2	21	5/1	4/1	6/2	6/1	6/0	3/2	4/2	5/3	5/2	14			
JOHN	5/3	2/3	4/3	6/2	6/1	4/3	2/3	5/3	2/4	25	4/3	3/3	6/2	5/2	4/3	4/1	5/1	4/2	4/3	20			
+/- PXC	-1	-2	-2	-2	-1	-2	-3	-3	-4		-5	-6	-6	7/5									
PAR	5	3	4	5	4	4	3	5	3	36	4	3	5	4	4	3	4	5	4	36	72		
LEIGH	5/3	3/3	4/3	5/3	6/1	4/3	5/1	5/3	4/2	22	6/1	3/3	6/2	10	4/3	2/4	4/3	7/1	4/3	20			
HCP TOURNAMENT OAK JOHNSTON	7	17	9	3	11	1	15	5	13		10	14	8	6	12	18	16	2	4				
HCP KIAWAH CAROLINA	11	17	13	1	5	7	15	3	9		12	16	2	8	10	18	6	4	14				

SCORER: _____

ATTEST: _____

DATE: _____



1. USGA rules govern all play except where local rules prevail.
2. Lateral Hazards are defined with red stakes and lines.
3. Water Hazards are defined with yellow stakes and lines.
4. Marked sprinkler heads are measured to the front, middle and back of greens.
5. Proper attire required at all times.
6. Please fill divots with sand, repair ball marks on the greens, and after raking a bunker, leave the rake in the bunker.
 7. Cart paths are not an artificial surface, therefore no relief.
8. All sand areas on the golf course are not hazards and therefore are played as through the green.

DUNE PRESERVATION:

The dunes and the natural vegetation are important elements of this course and our coastline. PLEASE use care when playing from these areas. Golf carts are prohibited in the dunes.



Roger Warren, PGA
President of Kiawah Island Golf Resort



Brian Gerard, PGA
Director of Golf



Stephen Youngner, PGA
Head Professional



Jeff Stone, GCSAA
Golf Course Superintendent

1000 Ocean Course Drive
Kiawah Island, SC 29455
843.768.2121
www.kiawahgolf.com



Kiawah Island
GOLF RESORT

HOST SITE OF...

- 1991 Ryder Cup
- 2005 PGA National Professional Championship
- 2007 Senior PGA Championship
- 2012 PGA Championship

A Pete Dye Course.

HOLE	1	2	3	4	5	6	7	8	9	OUT	I	10	11	12	13	14	15	16	17	18	IN	TOT	HCP	NET
TOURNAMENT	144/77.3	395	543	390	453	207	455	527	197	464	3631	439	562	466	404	194	421	579	221	439	3725	7356		
OCEAN	138/73.6	375	528	367	432	185	377	505	170	415	3354	378	521	420	371	171	391	555	197	421	3425	6779		
DYE	134/72.0	365	501	319	401	177	345	493	166	406	3173	360	506	412	364	161	381	540	182	396	3302	6475		
X KIAWAH	M-132/70.9 L-132/76.7	357	495	310	396	171	331	484	151	399	3094	347	476	398	333	151	358	491	168	386	3108	6202		
CAROLINA	124/72.7	306	419	268	328	117	299	432	105	344	2618	310	440	326	312	132	306	447	122	314	2709	5327		
TIM		5/1	6/2	4/3	5/2	4/1	4/2	5/3	4/1	5/2	17	5/1	5/2	5/2	5/1	3/2	5/1	6/2	3/3	4/3	17	34		
JOHN		5/1	6/2	4/3	6/1	4/2	3/4	6/2	4/1	6/1	17	5/1	5/3	4/3	4/3	4/2	6/0	8/2	4/2	5/2	18	35		
+/- P/C		□	□	□	+1	□	-1	□	□	±1		±	+1	□	-1	-2	-2	-1	-1	□	10			
PAR		4	5	4	4	3	4	5	3	4	36	4	5	4	4	3	4	5	3	4	36	72		
6194		4/3	7/1	4/3	-10	3/3	5/2	5/3	4/2	5/2	19	4/3	5/2	5/3	6/1	6/1	3/3	5/2	-10	70	6/1	13	19	32
HCP TOURNAMENT OCEAN		15	3	9	1	11	13	7	17	5		18	10	8	12	14	16	4	6	2				
HCP DYE KIAWAH																								
HCP CAROLINA		9	1	11	3	15	13	5	17	7		12	4	6	10	16	14	2	18	8				

SCORER: _____

ATTEST: _____

DATE: _____



1. USGA rules govern all play except where local rules prevail.
2. Out of bounds defined by white posts and the inside edge of roads.
3. Lateral Hazards are defined with red stakes and lines.
4. Water Hazards are defined with yellow stakes and lines. Note: Ball Drops are located on most forward tee at 3 & 11.
5. Marked sprinkler heads are measured to front, middle and back of greens.
6. Fill divots with sand, repair ball marks & after raking bunkers leave rakes in the bunker.
7. Proper attire required at all times.
8. Carts are restricted to paths around tees and greens.
9. Slow play will be monitored for the enjoyment of everybody. Please keep pace with the group ahead.

WETLANDS PRESERVATION:

The wetlands & marshes that are deemed environmentally sensitive are marked by RED or YELLOW stakes with GREEN tops. Play from or entry into these areas is strictly prohibited.



Roger Warren, PGA
President of Kiawah Island Golf Resort



Brian Gerard, PGA
Director of Golf
Master Professional



Jim Kelechi, PGA
PGA Certified Head Professional



Steve Miller, GCSAA
Golf Course Superintendent

One Sanctuary Beach Drive
Kiawah Island, SC 29455
843.768.2121
www.kiawahgolf.com

Tom Fazio

A Tom Fazio Course.

HOLE	1	2	3	4	5	6	7	8	9	OUT	10	11	12	13	14	15	16	17	18	IN	TOT	HCP	NET
TOURNAMENT 135/73.3	455	489	175	425	417	201	340	558	461	3521	421	205	544	354	345	170	416	404	552	3411	6932		
OSPREY 133/72.0	390	485	165	395	380	170	332	517	428	3262	411	158	530	323	336	160	401	390	531	3240	6502		
X FAZIO 131/70.6	355	455	152	376	371	157	317	503	418	3104	395	151	509	307	320	148	364	380	524	3098	6202		
KIAWAH M 115/67.0 L 130/73.2	321	447	145	372	366	147	265	455	353	2871	355	142	451	291	293	114	316	344	416	2722	5593		
CAROLINA 121/70.0	304	407	115	344	318	131	234	411	331	2595	327	82	423	248	245	91	282	330	400	2428	5023		
	4/2	5/2	3/3	4/3	5/2	4/2	5/1	5/2	5/2	19	4/3	3/2	5/3	4/2	4/2	3/2	5/1	4/3	5/3	21	19	40	
	9	9	9	WFT EDGE	THW LOB	BL THW	FB SHOOT	R GIRN SHOOT	ST HOLE BOTTLE		55 60	9	9	9	9	SHORT BIS	BR P	9		40	37	77	
	2	2	2	1	2	1	1	1	2		1	2	2	2	2	1	2	1	2				
	7:15	7:22	7:30	7:38	7:42	7:49	7:53	8:00	8:11		8:20	9:25	9:38	9:46	9:58	10:08	10:17	10:29	10:33				
+/-																				9:30			
PAR	4	5	3	4	4	3	4	5	4	36	4	5	5	4	4	3	4	4	5	36	72		
HCP	TOURNAMENT OSPREY FAZIO	11	15	7	3	5	9	17	13	1	2	10	8	16	14	18	12	4	6				
HCP	KIAWAH CAROLINA	10	12	18	4	8	16	14	6	2	1	17	3	11	13	15	9	5	7				

SCORER: _____

ATTEST: _____

DATE: _____

USGA Rules Govern Play

The local embedded ball rule (through the green) is in effect for all Club competitions.

Priority Rule: If a match fails to keep its place on the course and loses more than one clear hole on the players in front, it shall invite the following match to pass.

	Men	
	Rating	Slope
Black Course	74.8	140
Blue Course	72.0	138
White Course	70.7	134
Green Course	68.3	131

	Women	
	Rating	Slope
White Course	77.5	145
Green Course	75.1	141



A.W. Tillinghast
Architect

HOLE	1	2	3	4	5	6	7	8	9	Out	P L A Y E R	10	11	12	13	14	15	16	17	18	In	Tot	H C P T	N E T		
	BLACK COURSE	527	425	451	454	185	446	437	359	164		3448		201	406	446	234	576	408	430	362	456			3519	6967
BLUE COURSE	510	405	424	408	151	434	416	335	143	3226		186	372	403	209	517	375	414	344	410	3230	6456				
WHITE COURSE	496	389	414	384	132	424	380	325	134	3078		172	360	377	196	499	368	392	337	391	3092	6170				
GREEN COURSE	442	359	404	363	113	414	368	316	127	2906		130	288	350	181	432	360	408	330	354	2833	5739				
PAR: MEN	5	4	4	4	3	4	4	4	3	35		3	4	4	3	5	4	4	4	4	35	70				
HANDICAP	7	5	9	11	17	1	3	13	15		18	10	2	14	6	12	4	16	8							
TIM	9	5/3	5/2	7/0	4/2	3/2	6/1	6/1	5/1	3/2	14	T	4/1	4/2	4/3	4/1	5/3	4/2	4/3	4/2	5/2	19	14	33		
DAVID	12	6/2	4/3	7/0	4/3	5/0	6/1	5/2	4/2	4/1	14	D	4/1	4/3	5/2	4/1	3/3	5/2	6/1	6/0	6/1	14	14	28		
+/-																										
+/-																										
PAR: WOMEN	5	4	5	4	3	5	4	4	3	37		3	4	4	3	5	4	5	4	4	36	73				
HANDICAP	3	7	11	9	17	5	1	13	15		18	8	6	16	2	4	10	14	12							

DATE: _____ SCORER: _____ ATTEST: _____

USGA RULES GOVERN ALL PLAY

EXCEPT WHERE LOCAL RULES PREVAIL

- ENVIRONMENTALLY SENSITIVE AREAS (HABITAT AREAS) MUST NOT BE ENTERED. RELIEF MUST BE OBTAINED FROM THESE AREAS Laterally WHERE THE BALL LAST ENTERED THE HABITAT AREA, OBTAINING TWO-CLUB LENGTH RELIEF, INCURRING A ONE-STROKE PENALTY.
- SLOW PLAY WILL BE MONITORED, THOSE GROUPS UNABLE TO KEEP UP WITH THE GROUP AHEAD MAY BE REQUESTED TO ALLOW FASTER PLAYERS/GROUPS TO PLAY THROUGH.
- PLEASE REPAIR YOUR BALL MARKS ON THE GREENS, RAKE BUNKERS AND REPLACE DIVOTS.
- DRESS CODE: MEN - COLLARED SHIRTS, SLACKS OR SHORTS (NO DENIM MATERIALS OF ANY TYPE). WOMEN - NON-COLLARED SHIRTS MUST HAVE SLEEVES, COLLARED SHIRTS MAY BE WORN WITH SLEEVES OR SLEEVELESS, SHORTS OR SLACKS (NO DENIM MATERIALS OF ANY TYPE), SHORTS MUST BE 4" ABOVE THE KNEE OR LONGER.
- PLEASE USE BALL DROP PROVIDED ON HOLES 5, 8, 10 AND 13, IF YOUR TEE SHOT FINDS ITS RESTING PLACE IN THE HABITAT OR WATER.
- RESTROOMS LOCATED: 6 TEE BOX, BEHIND 7 GREEN, CLUBHOUSE AND BEHIND 14 GREEN.
- SWING, STANCE OR BALL INTERFERED BY ROCK WALLS IN THE BUNKERS MAY BE PLACED WITH NO PENALTY INCURRED (NO CLOSER TO THE HOLE IN LIKE PLAYING CONDITION).

WWW.TRUMPNATIONAL.COM



Trump National Golf Club

LOS ANGELES

HOLE	1	2	3	4	5	6	7	8	9	OUT	10	11	12	13	14	15	16	17	18	IN	TOT	HCP	NET	
BLACK	75.0/146	340	530	427	171	513	473	578	235	509	3776	440	225	530	445	561	175	338	240	512	3466	7242		
BLUE	72.1/138	314	475	368	150	444	409	540	201	445	3346	300	195	500	418	485	150	300	206	391	2945	6291		
WHITE	M:69.8/133 W:75.8/145	309	450	336	137	397	397	512	183	422	3143	280	187	475	385	459	131	278	181	362	2738	5881		
RED	71.6/138	284	405	280	119	326	368	447	154	390	2773	252	136	448	342	450	117	260	160	332	2497	5270		
YELLOW	68.6/124	253	343	230	98	295	334	400	107	354	2414	200	106	412	260	404	96	205	139	302	2124	4538		
Tim		5/1	5/2	5/1	4/1	5/2	4/3	6/2	4/2	5/2	16	5/1	4/2	6/1	6/1	6/2	4/1	5/1	3/2	4/3	14	16	30	
BART/DALID																								
MEN'S PAR	4	5	4	3	4	4	5	3	4	36	4	3	5	4	5	3	4	3	4	35	71			
WOMEN'S PAR	4	5	4	3	4	4	5	3	5	37	4	3	5	4	5	3	4	3	4	35	72			
MEN'S HCP	11	15	13	17	3	5	9	7	1		10	8	12	4	6	16	18	14	2					
WOMEN'S HCP	7	1	13	17	9	11	5	15	3		10	12	4	8	2	16	14	18	6					

DATE:

SCORER:

ATTEST: