

THE TRIPARTITE

Royal Adelaide Golf Club

Royal Melbourne Golf Club

Royal Sydney Golf Club

3rd – 5th May 2013



SCALE IN YARD

ITINERARY

Accommodation booked for Royal Melbourne & Royal Sydney guests at The Lakes Resort

Friday 3rd May

- 10.00 am Bus to pick up from Airport meet RSGC & RMGC participants and transfer them to Grange Golf Club.
- 11.00 am Arrive at Grange Golf Club for 12.00pm tee off.
- 5.00 pm Bus to pick up RMGC & RSGC guests from Grange Golf Club and drop off at The Lakes Resort Hotel. Guests to leave golf clubs on bus.
- 6.15 pm Bus to pick up from the Lakes Resort Hotel and transfer guests with their golf clubs to Royal Adelaide. Guests golf clubs to be left at Royal Adelaide until Sunday departure.
- 6.30 pm Bus arrives at Royal Adelaide.
- 7.00 pm Dinner at RAGC (Dress - Smart casual).
- 9.30 pm Function concludes. Minibus to transfer guests to The Lakes Resort Hotel.

Saturday 4th May

- 9.30 am President, Captain and General Manager of RSGC & RMGC collected from their hotel for meeting at RAGC.
- 11.15 am Minibus to transfer remaining guests from The Lakes Resort Hotel to RAGC (bring Jacket and Tie).
- 11.45 am Light Lunch in the Clubhouse for all participants (Golfing Attire).
- 12.45 pm Golf – multi-tee start.
- 5.00 pm Post Golf Drinks in the Clubhouse/Veranda (Golfing Attire). Showers and changed for dinner.
- 6.15 pm Pre-Dinner Drinks in the Clubhouse (Jacket and Tie).
- 7.00 pm Dinner in the Clubhouse.
- 10.00 pm Minibus to transfer RSGC & RMGC guests to The Lakes Resort Hotel.

Sunday 5th May

- 7.45 am Minibus to transfer guests from The Lakes Resort Hotel to RAGC.
- 8.45 am Golf (multi-tee start) followed by Lunch and Presentation at RAGC.
- 1.00 pm Pre-Lunch Drinks (Golfing attire).
- 1.30 pm Lunch in the Clubhouse (Golfing attire).
- 3.30 pm Minibus to transfer guests from RAGC to the airport.
- RMGC Flight Departs: 5.30pm
- RSGC Flight Departs: 4.55pm



Royal Sydney Team

DAWSON, Sandy

President

4

HAEGE, Ivan

Captain

12

DOUGHTY, Mathew

Committee Member

2

RANKINE, Tim

Member

5

SAUNDERS, Scott

Member

6

ROGERS, Michael

Member

7

DOBBIN, David

Treasurer

8

MCDONALD, Andrew

Committee Member

17

HINTON, Paul

General Manager

13

SCALE IN Yds



THE ROYAL MELBOURNE GOLF CLUB INC.

Royal Melbourne Team

ALLEN, Richard	Captain	3
SMILEY, Tom	President	29
EVANS, Alan	Council/House & Social Committee	2
LIGHT, Tony	Match Committee	8
KING, Jim	Incoming Captain to be elected/Past Committee Member	10
BEER, Michael	Past Sub-Committee Member	10
MARKS, Stephen	Council/Treasurer	13
THOMAS, David	Council/Chairman Property Committee	16
RAK, Paul	Chief Executive Officer	12

SCALE IN YARD



Royal Adelaide Team

JAY, Michael	Captain	8
PERKS, Kym	Vice President	8
EVANS, Tim	Chairman of House & Events Committee	7
SWEENEY, Jim	Chairman of Membership & Rules Committee, Pennant Manager	7
TAYLOR, Eddie	Committee Member	7
MCFARLANE, Ian	Former Committee Member	8
RICHARDS, Rob	Chairman of Junior Committee	10
WHITE, Peter	Chairman of Match Committee	12
GAY, Andrew	General Manager	19

SCALE IN YARDS

GOLF DRAW

SATURDAY 4TH MAY 2013

Tee	Time	Royal Sydney		V	Royal Adelaide	
1st Tee	12.45pm	Sandy Dawson	Mathew Doughty		Michael Jay	Tim Evans
1st Tee	12.53pm	Scott Saunders	David Dobbin		Eddie Taylor	Rob Richards
		Royal Melbourne		V	Royal Adelaide	
1st Tee	1.01pm	Tom Smiley	Tony Light		Kym Perks	Jim Sweeney
3rd Tee	12.45pm	Michael Beer	David Thomas		Ian McFarlane	Peter White
		Royal Melbourne		V	Royal Sydney	
3rd Tee	12.53pm	Richard Allen	Alan Evans		Ivan Haege	Tim Rankine
3rd Tee	1.01pm	Jim King	Stephen Marks		Michael Rogers	Andrew McDonald

***Play is to be from White Tees.**

SUNDAY 5TH MAY 2013

Tee	Time	Royal Melbourne		V	Royal Adelaide	
1st Tee	8.45am	Richard Allen	Jim King		Michael Jay	Eddie Taylor
1st Tee	8.53am	Alan Evans	Stephen Marks		Tim Evans	Rob Richards
		Royal Sydney		V	Royal Adelaide	
1st Tee	9.01am	Ivan Haege	Michael Rogers		Kym Perks	Ian McFarlane
18th Tee	8.45am	Tim Rankine	Andrew McDonald		Jim Sweeney	Pete White
		Royal Melbourne		V	Royal Sydney	
18th Tee	8.53am	Tom Smiley	Michael Beer		Sandy Dawson	Scott Saunders
18th Tee	9.01am	Tony Light	David Thomas		Mathew Doughty	David Dobbin

***Play is to be from White Tees**

SCALE IN YARD

TRIPARTITE HISTORY

In March 1993, at a meeting of the Presidents and Captains of the three Clubs, it was decided to hold an Annual Golf Match and Meeting to enhance the relationship between the three Clubs and discuss golf matters of mutual concern.

Present at the meeting were:

The Royal Adelaide Golf Club

D.N. ROBINSON President

J.F. SANGSTER Captain

The Royal Melbourne Golf Club

SIR JOHN HOLLAND President

W.I. WHITTON Captain

The Royal Sydney Golf Club

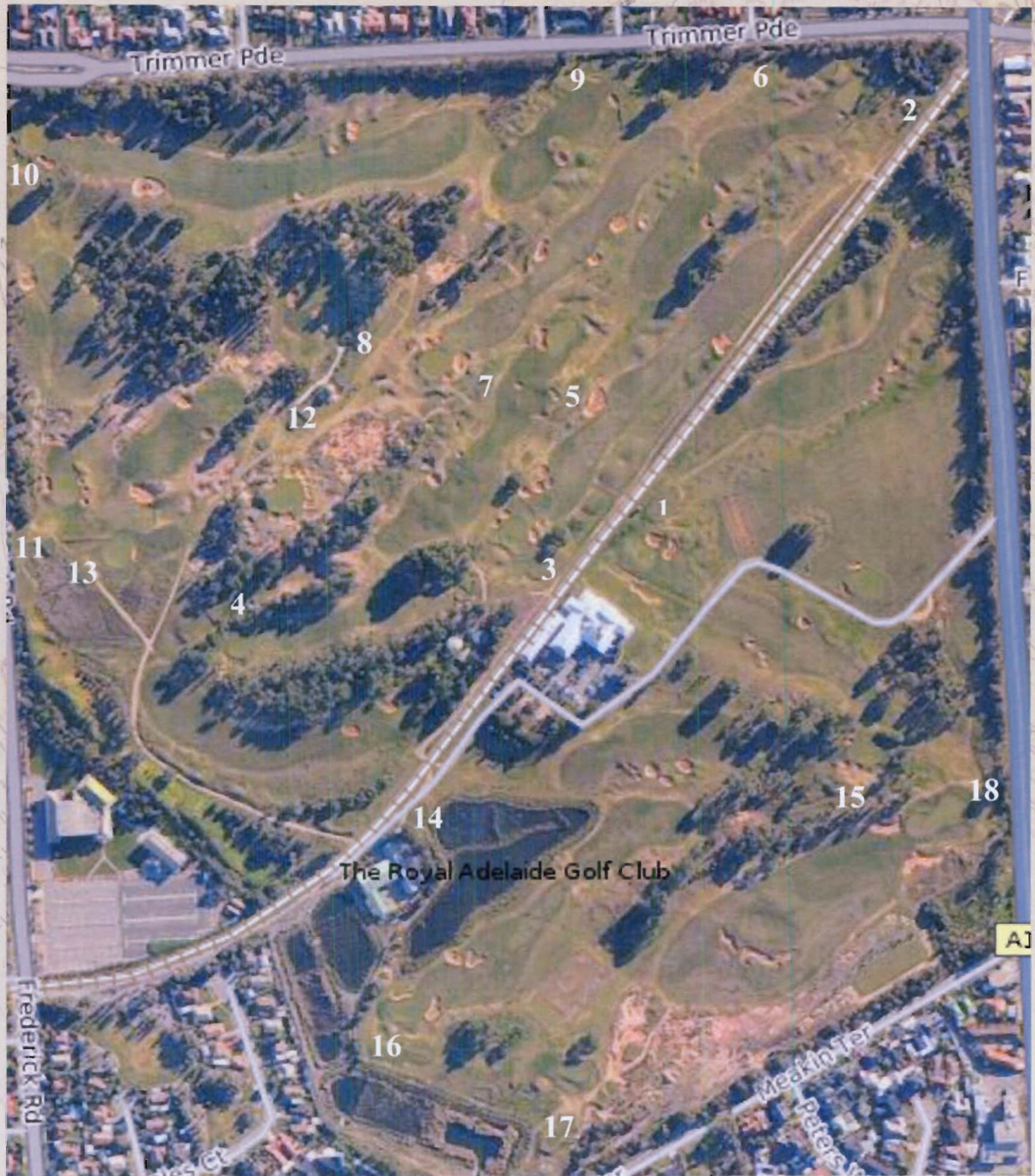
W.O.A. ASTRIDGE President

A.S. DAWSON Captain

RESULTS

Year	Venue	Result
1994	RMGC	RMGC/RSGC
1995	RAGC	RMGC
1996	RSGC	RMGC
1997	RMGC	RMGC
1998	RAGC	RMGC
1999	RSGC	RAGC
2000	RMGC	RAGC
2001	RAGC	RSGC
2002	RSGC	RSGC
2003	RMGC	RMGC
2004	RAGC	RSGC/RAGC
2005	RSGC	RSGC
2006	RMGC	RMGC
2007	RAGC	RAGC
2008	RSGC	RSGC
2009	RMGC	RMGC
2010	RAGC	RSGC
2011	RSGC	RSGC
2012	RMGC	RMGC

ROYAL ADELAIDE LINKS COURSE LAYOUT



SCALE IN YD

Captain Michael Jay, the Committee and Members of the
Royal Adelaide Golf Club

Welcome

Royal Melbourne Golf Club
&
Royal Sydney Golf Club

To the Interclub Weekend

Playing for the Tripartite



SCALE IN